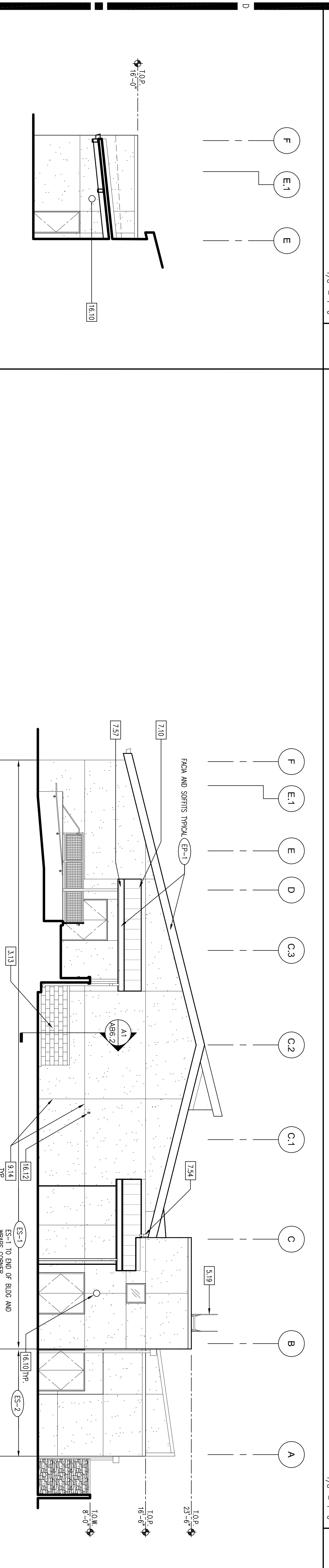


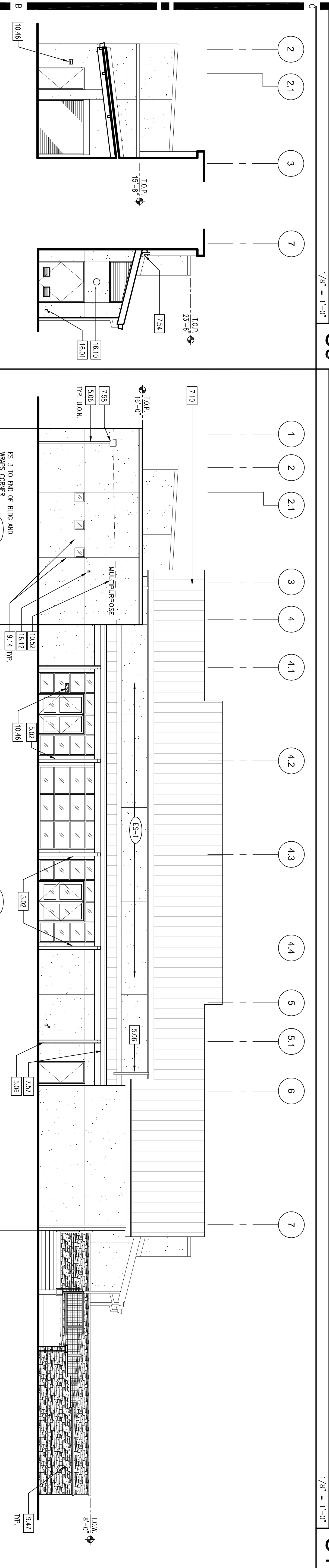
PARTIAL ELEVATION - NORTH
1/8" = 1'-0"

D5



PARTIAL ELEVATION - EAST
1/8" = 1'-0"

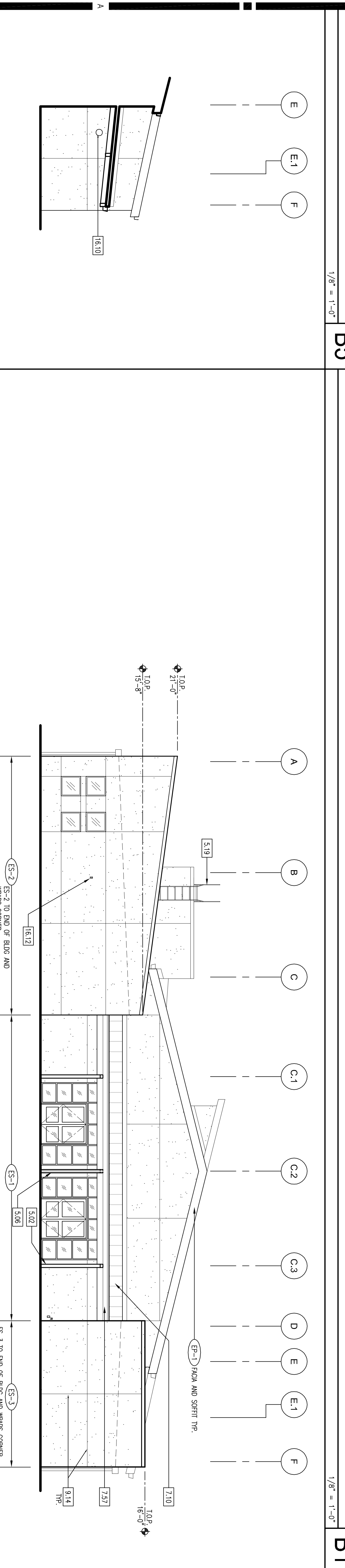
C5



EXTERIOR ELEVATION - NORTH
1/8" = 1'-0"

D1

- EXTERIOR ELEVATIONS KEYNOTES**
- 3.00 CONCRETE
 - 3.13 4" CMU, Veneer Masonry System
 - 5.00 METALS
 - 5.02 Column. See Structural Drawings.
 - 5.06 Downspout. See detail C4/A3.11.
 - 5.19 Roof access ladder, see detail D1/A3.11.
 - Z00 THERMAL AND MOISTURE PROTECTION
 - 7.10 Standing seam metal roofing system.
 - 7.14 Glass B/Glass 90 Uplift.
 - 7.54 Stainless Steel 18 Ga. x 4" downspout w/ 6" dia. pipe.
 - 7.57 Prefinished metal gutter to match metal roofing.
 - 7.58 Sopper. See Detail C5/A3.11
 - 9.00 FINISHES
 - 9.09 General plaster exterior wall system.
 - 9.14 Control joint. See Detail A3/A3.3.
 - 9.47 Manufactured stone veneer on setting bed
 - 10.00 SPECIALTIES
 - 10.46 Room signage, see detail D2/A10.1, Visual.
 - 10.52 8" high dimensional letters and numbers.
 - 18.00 ELECTRICAL
 - 18.01 Electric Outlet. See Electrical Drawings.
 - 18.10 Light Fixtures. See Electrical Drawings.
 - 18.12 Visual and/or Audio Alarm. See Telecom Drawings.



PARTIAL ELEVATION - WEST
1/8" = 1'-0"

A5

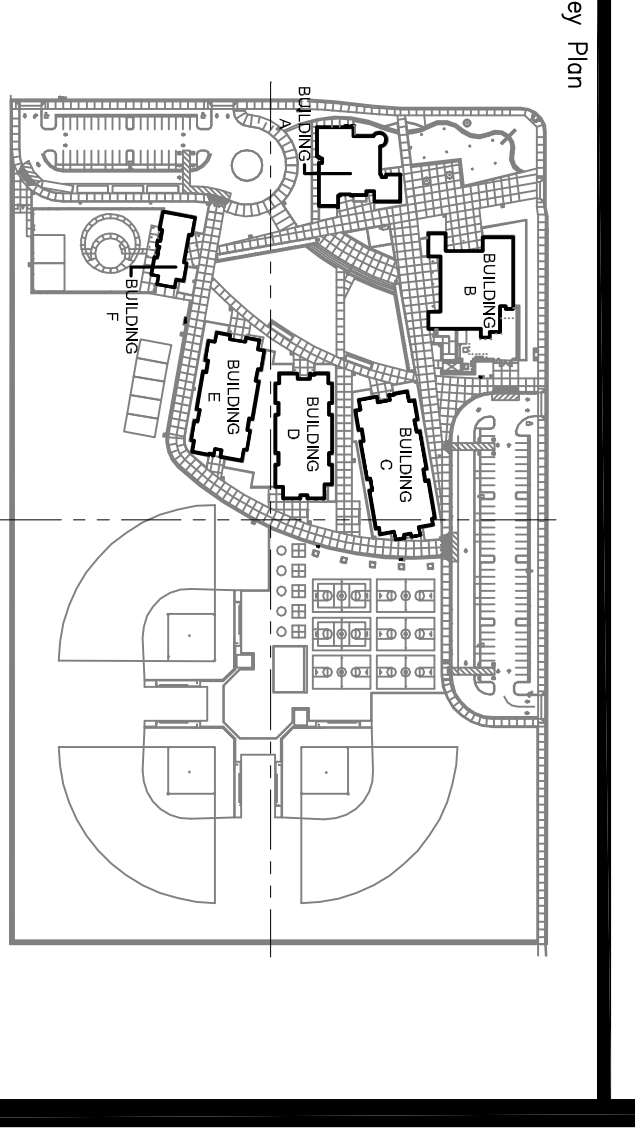


EXTERIOR ELEVATION - WEST
1/8" = 1'-0"

A1

HMC Architects
1827 EAST FIR AVENUE SUITE 103
FRESNO, CALIFORNIA 93720
Phone 559.202.9444 • Fax 559.202.9445
www.hmcarchitects.com

- GENERAL NOTES - EXTERIOR ELEVATIONS**
- All exterior glass to be triple 14 United glass, UN10.
 - See Door Types and Window Types for location of tempered glass.



DESIGNATION STAMP
OFFICE OF REGULATION SERVICES
APR. 02-110023
AC _____ DATE _____
FLS _____ SS _____

New Construction
CLOVIS ELEMENTARY SCHOOL
DAKOTA / ARMSTRONG
Clovis Unified School District

No.	Description	Date
Δ	ADDENDUM 3	01.18.10
Δ	DSA ADDENDUM	11.19.09
Δ	DSA BACK CHECK	11.21.08
Δ	DSA SUBMITTAL	06.06.08

EXTERIOR ELEVATIONS - BUILDING B

Architect's Seal
Project No. 3424001
Scale: 1/8" = 1'-0"
Drawing No. AD3-FC12

DESIGNED BY: SL, ML, BB
DRAWN BY: ES, JR, JH, CLO
CHECKED BY: JK
DATE: 11.14.08