

PROJECT:

CLOVIS WEST
HIGH SCHOOL
WEST
GYM FLOOR
RECONSTRUCTION

LOCATIONS:

1070 E. TEAGUE AVENUE
FRESNO, CA 93720
(559) 327-2000

DRAWN FOR:

CLOVIS UNIFIED
SCHOOL DISTRICT

LOCATION:

1450 HERNDON AVE.
CLOVIS, CA 93611
(559) 327-9000

ALAN K. MOK, P.E., R.C.E. 42,618

EDWARD M. WONG, P.E., R.C.E. 54,740

MICHAEL E. MILHOUS, P.E., R.C.E. 83,320



ALAN MOK ENGINEERING EXPRESSLY RESERVES ITS COMMON LAW COPYRIGHT AND OTHER APPLICABLE PROPERTY RIGHTS IN THESE PLANS. THESE PLANS ARE NOT TO BE REPRODUCED, CHANGED, OR COPIED IN ANY FORM OR MANNER WHATSOEVER, NOR ARE THEY TO BE ASSIGNED TO A THIRD PARTY WITHOUT FIRST OBTAINING THE WRITTEN PERMISSION AND CONSENT OF THE ENGINEER. IN THE EVENT OF UNAUTHORIZED REUSE OF THESE PLANS BY A THIRD PARTY, THE THIRD PARTY SHALL HOLD THE ENGINEER HARMLESS, AND SHALL BEAR THE COST OF THE ENGINEER'S LEGAL FEES, ASSOCIATED WITH DEFENDING AND ENFORCING THESE RIGHTS.

REVISIONS:

No.	DATE	DESCRIPTION

SHEET DESCRIPTION:

DETAILS

PROJECT COORDINATOR:

AKM

PROJECT No.

222-0249

DATE:

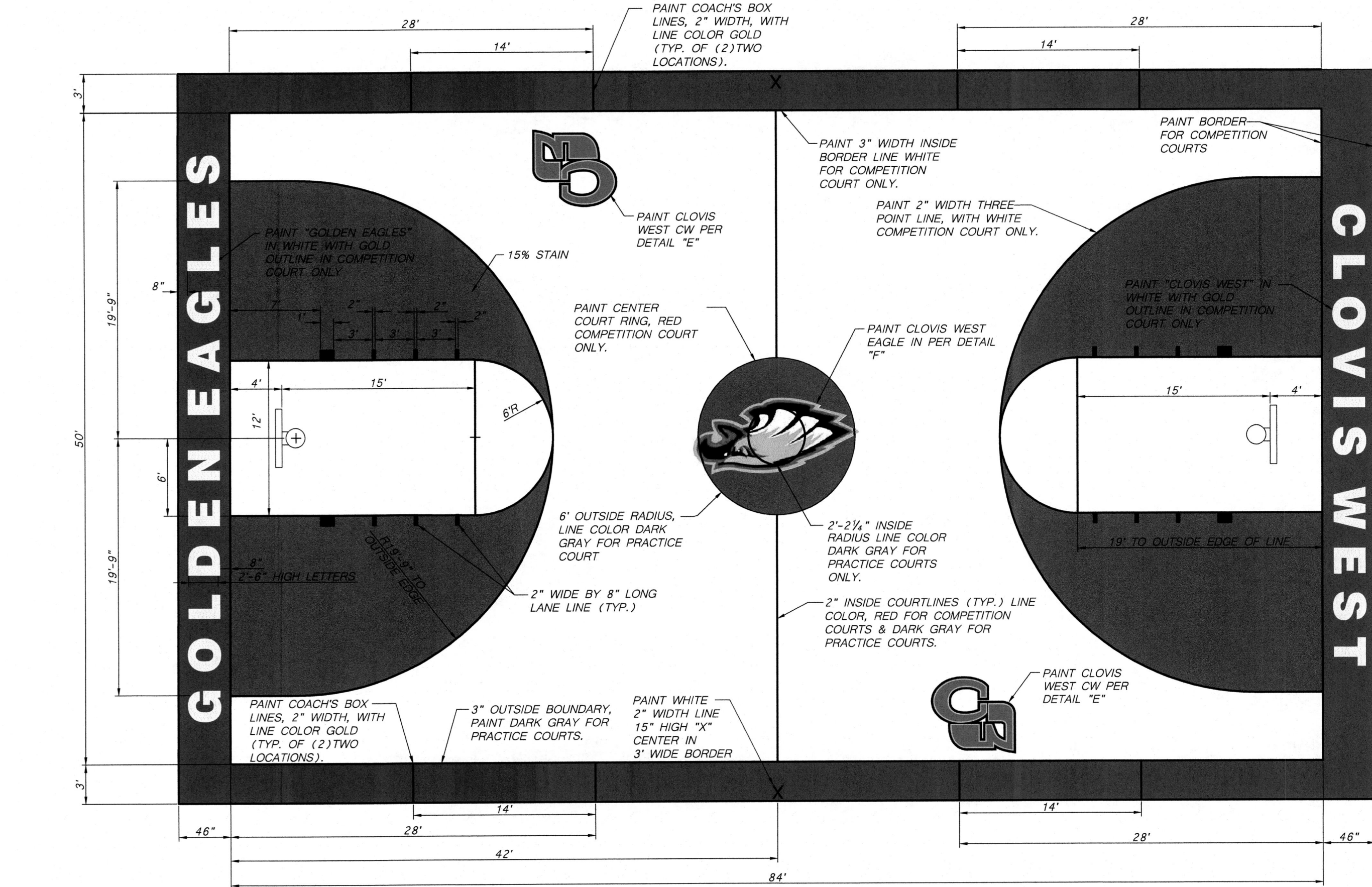
02/13/2023

SCALE:

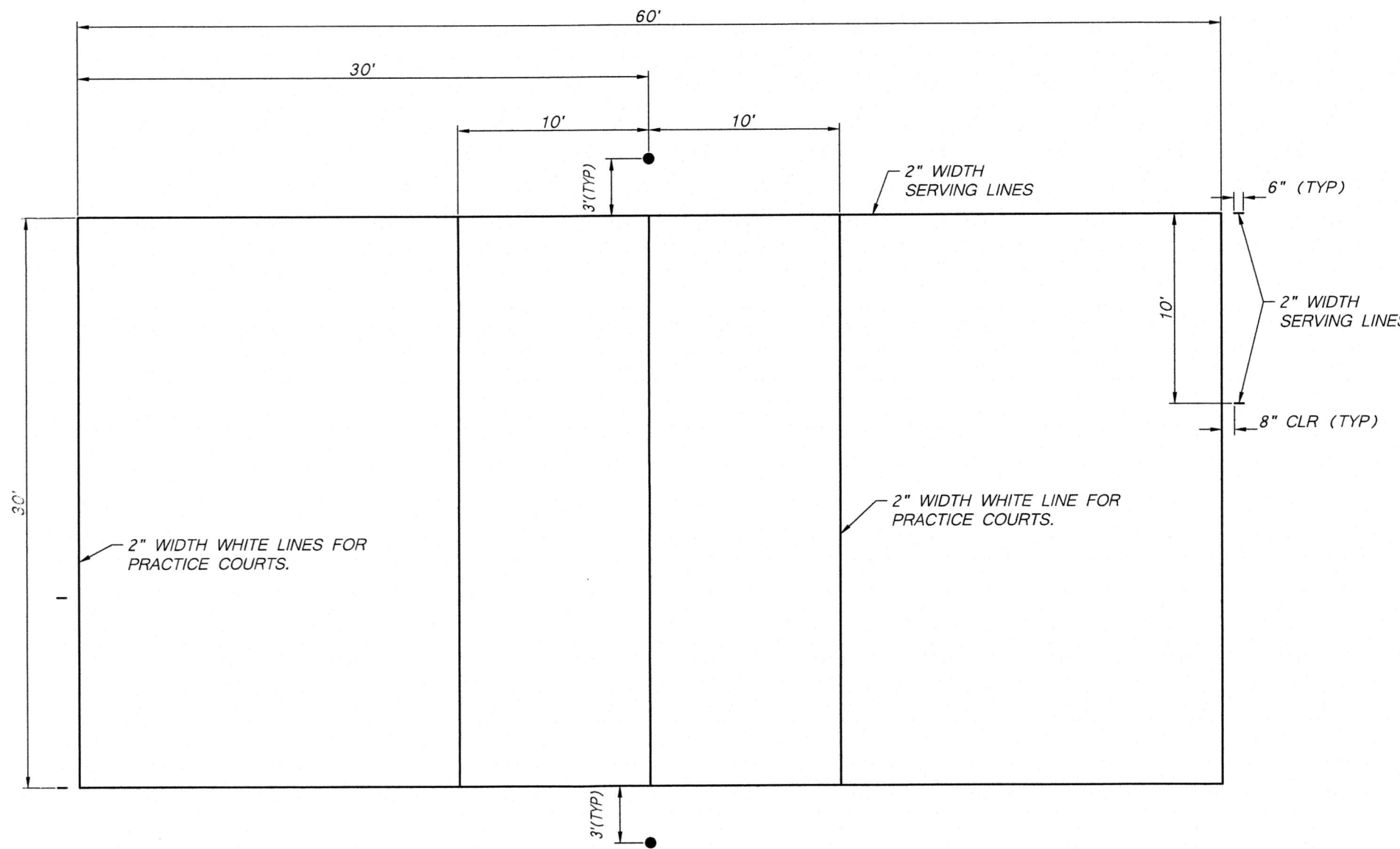
AS NOTED

SHEET No.

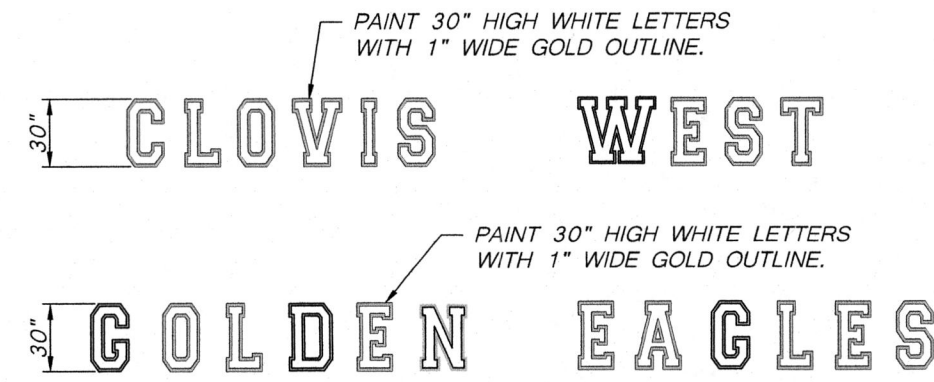
C4



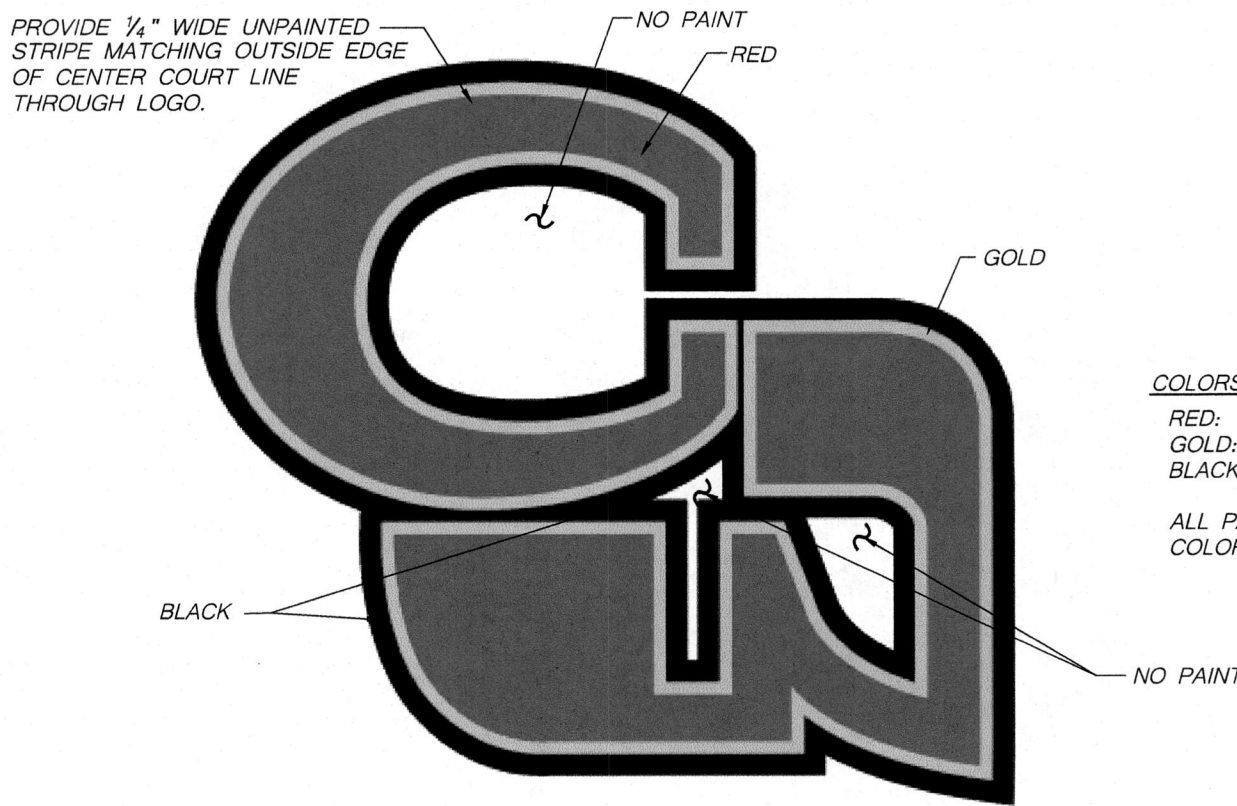
A COMPETITION AND PRACTICE BASKETBALL COURT
NOT TO SCALE



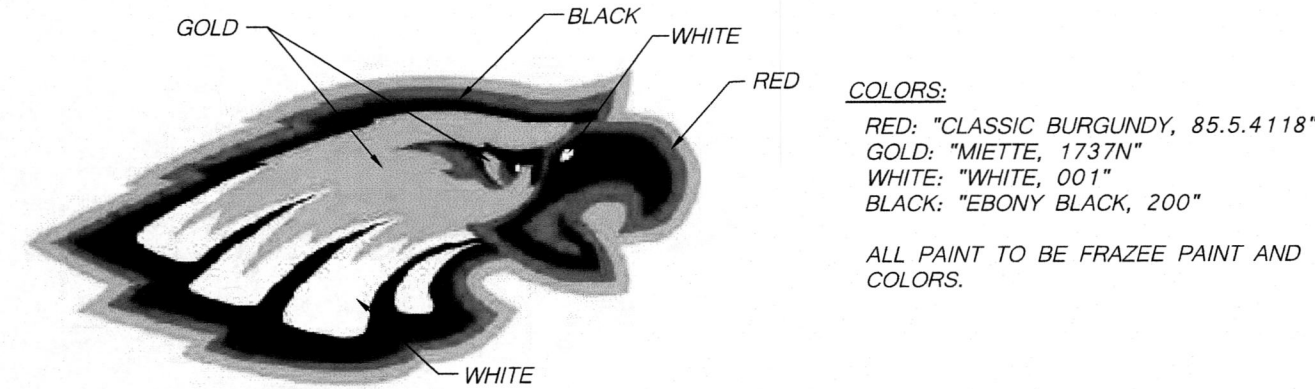
C TYPICAL VOLLEYBALL COURT
NOT TO SCALE



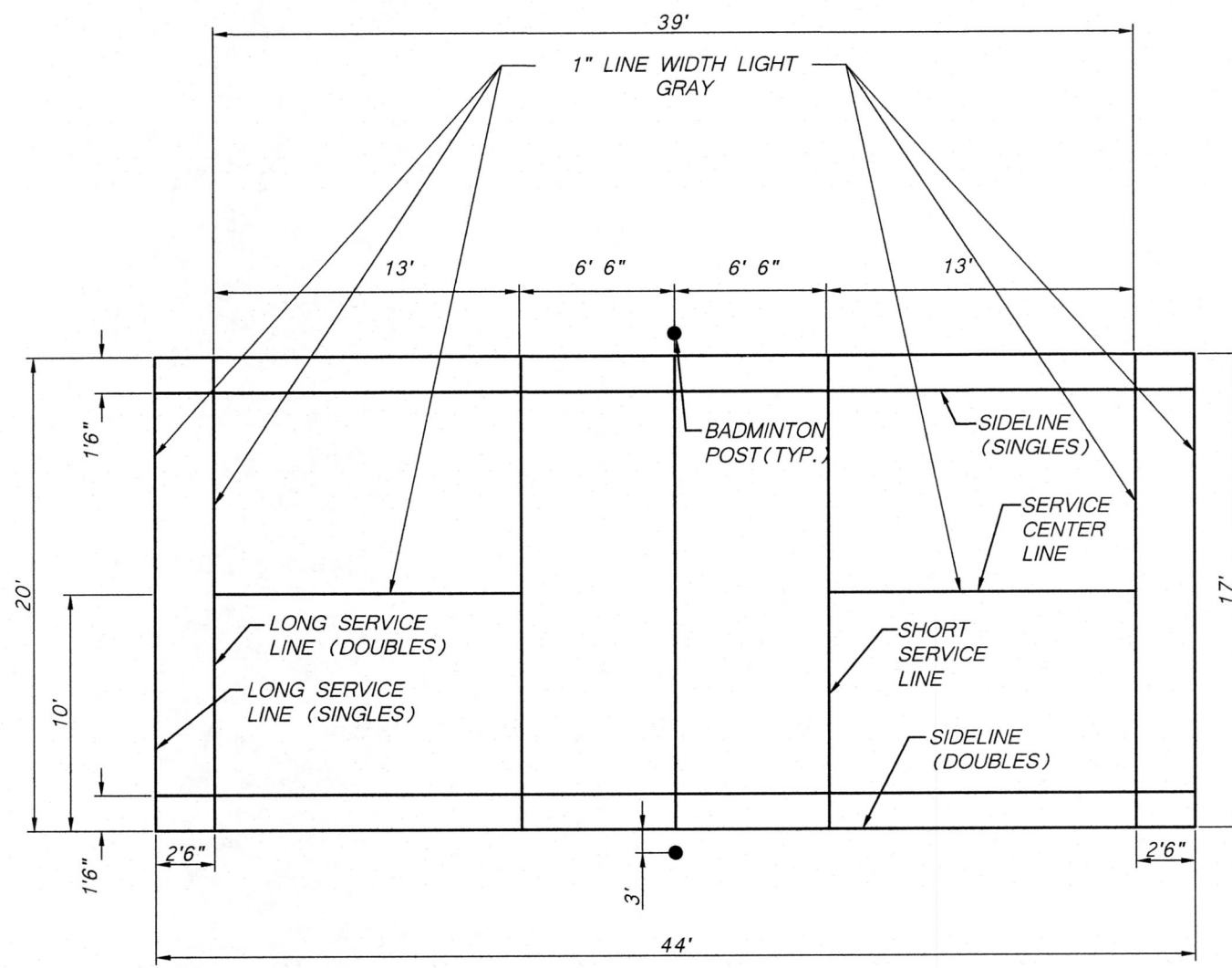
D COMPETITION COURT LETTERING
NOT TO SCALE



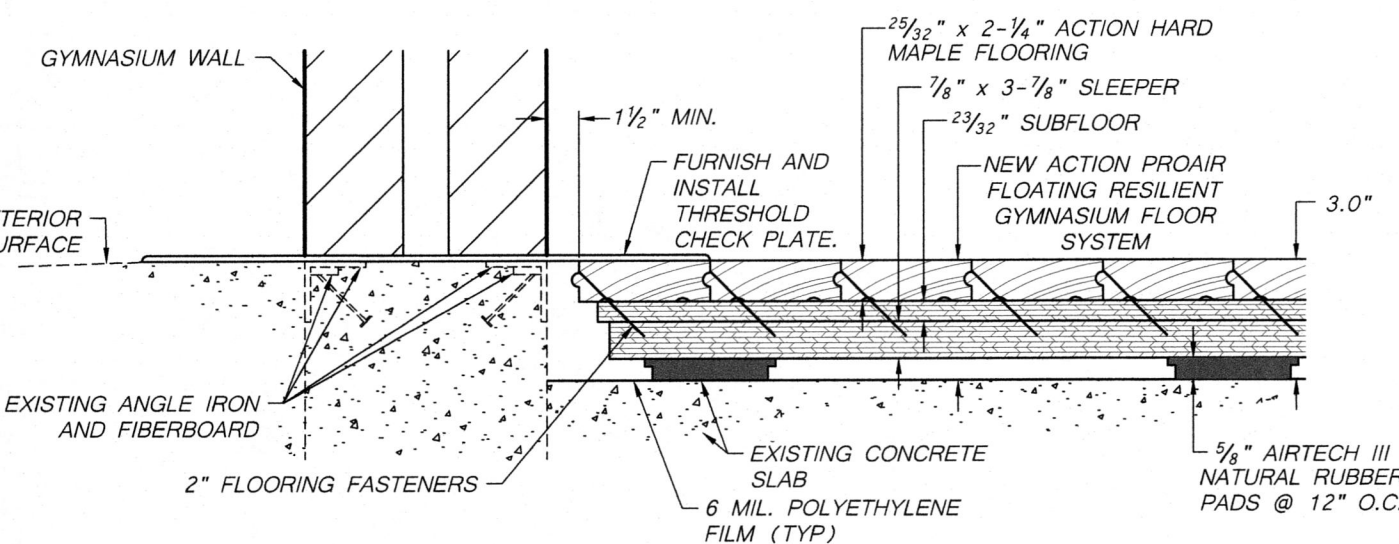
E CLOVIS WEST LOGO
NOT TO SCALE



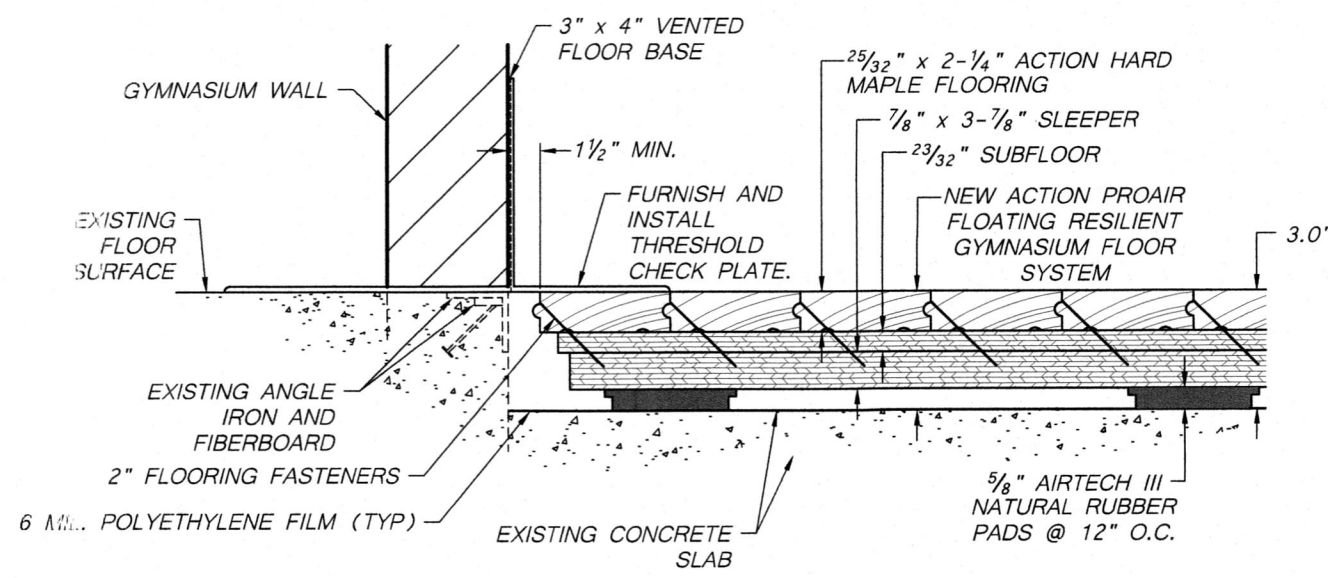
F CLOVIS WEST EAGLE
NOT TO SCALE



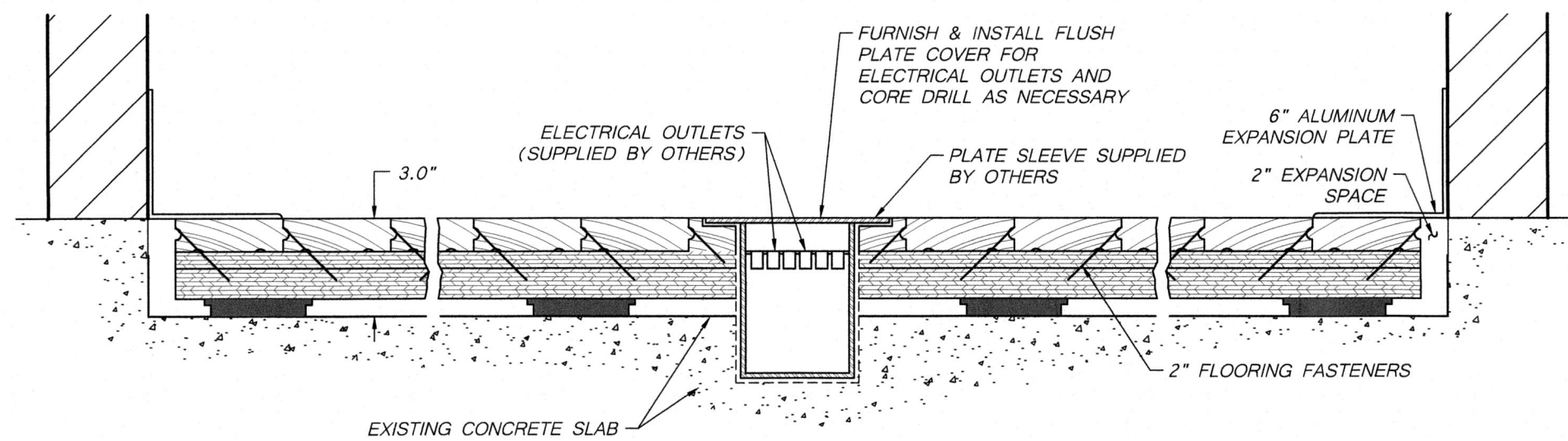
B TYPICAL BADMINTON COURT
NOT TO SCALE



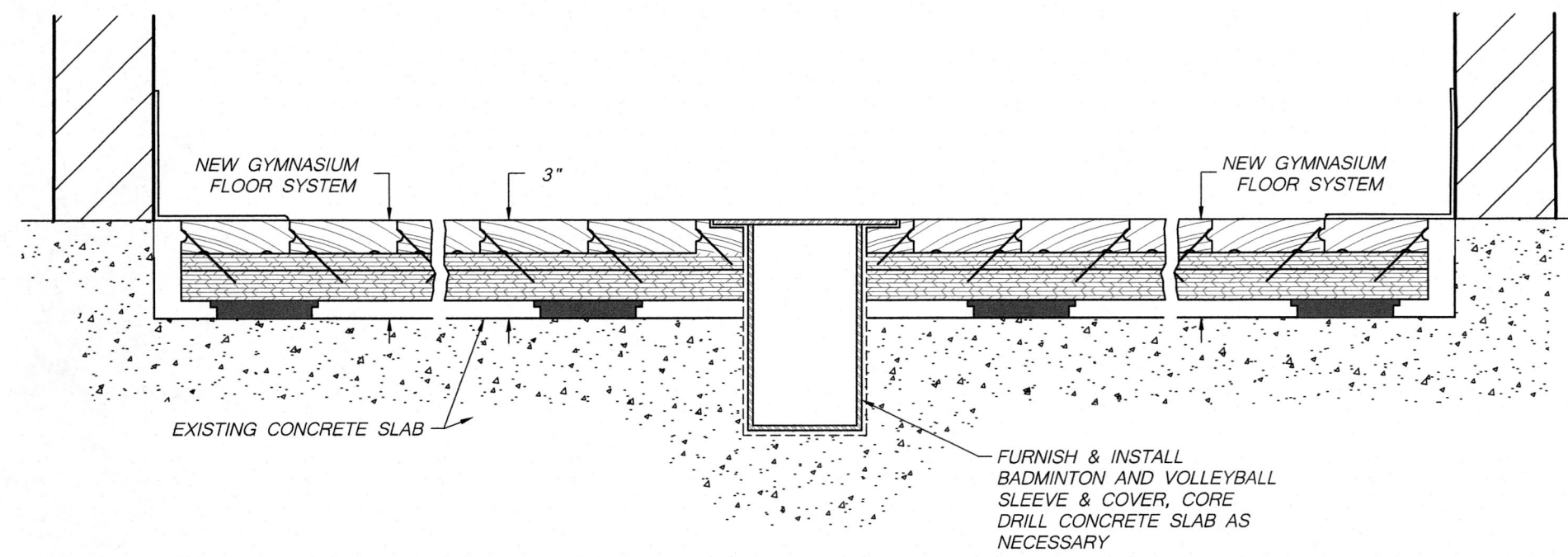
G EXTERIOR DOOR THRESHOLD
NOT TO SCALE



G INTERIOR DOOR THRESHOLD
NOT TO SCALE



H ELECTRICAL BOX AND FLOOR PLATE
NOT TO SCALE



I PLAY EQUIPMENT SLEEVE & FLOOR PLATE
NOT TO SCALE