



IDENTIFICATION STAMP  
 DIV. OF THE STATE ARCHITECT  
 APP: 02-121172 INC:  
 REVIEWED FOR  
 SS  FLS  ACS   
 DATE: 03/16/2023

FOR DSA USE ONLY  
 DSA APP# 02-121172

**PARKING CALCULATIONS**

LOT#	DSA APP #	STALLS PROVIDED	ACCESSIBLE STALLS PROVIDED	ACCESSIBLE STALLS REQUIRED PER CBC 11B208.2
A	02-110826	41	2 TOTAL, 1 VAN	2 TOTAL, 1 VAN
B	02-110826	27	2 TOTAL, 1 VAN	2 TOTAL, 1 VAN
C	PER THIS APPLICATION	22	2 TOTAL, 1 VAN	1 TOTAL, 1 VAN

**SITE LEGEND:**

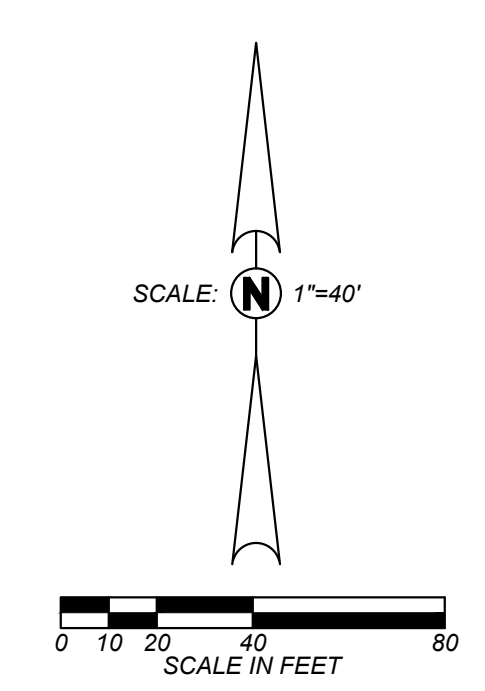
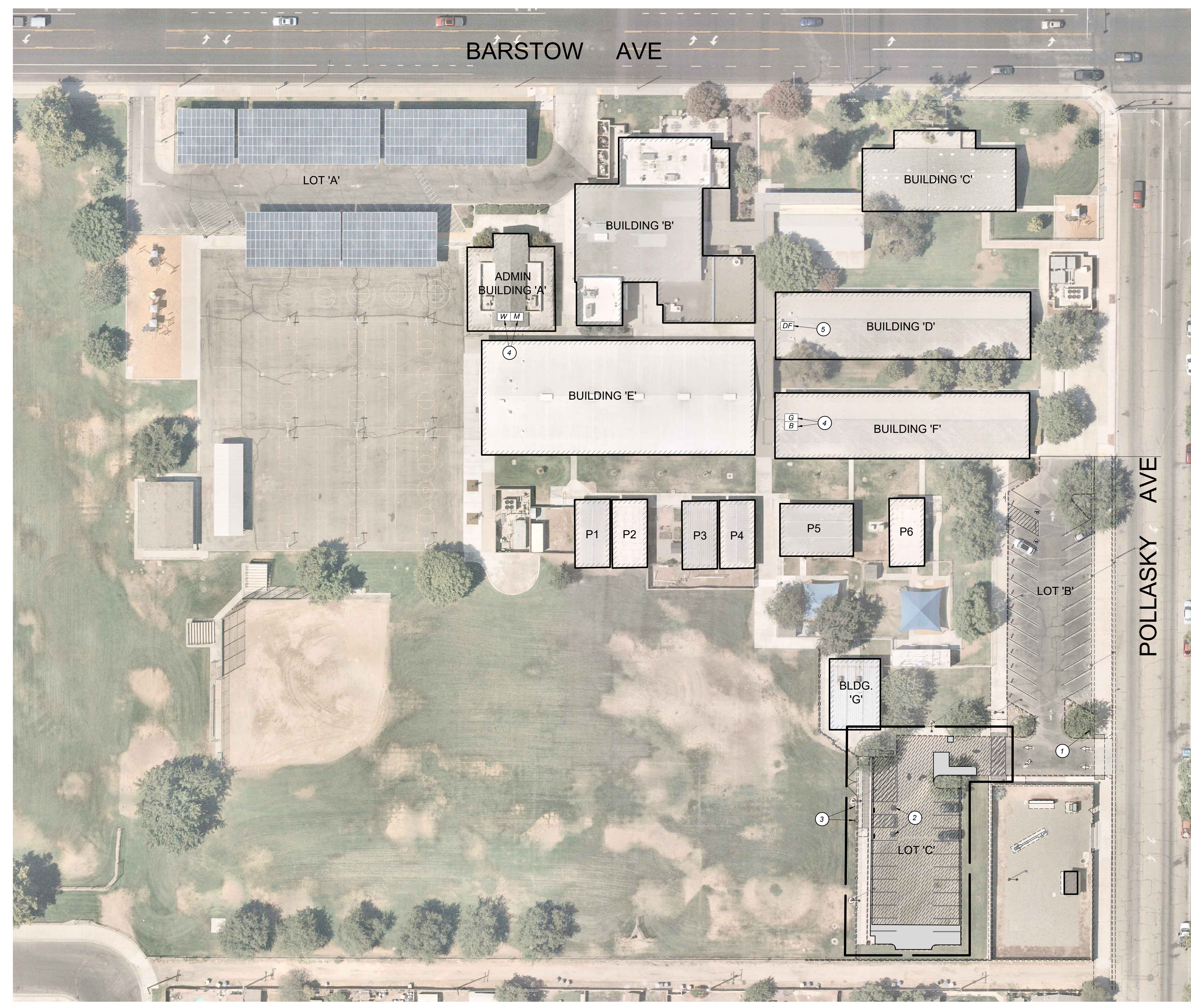
Symbol	LIMITS OF WORK
M	ACCESSIBLE MEN'S RESTROOM PER DSA APP # 02-110826
W	ACCESSIBLE WOMEN'S RESTROOM PER DSA APP # 02-110826
B	ACCESSIBLE BOY'S RESTROOM PER DSA APP # 02-110826
G	ACCESSIBLE GIRL'S RESTROOM PER DSA APP # 02-110826
DF	EXISTING DRINKING FOUNTAIN PER DSA APP # 02-110826
1	ENTRY TOW AWAY SIGN PER DSA APP # 02-112285
2	ACCESSIBLE PARKING STALLS PER THIS APPLICATION
3	ACCESSIBLE PARKING SIGN PER DSA APP # 02-112285
4	EXISTING ACCESSIBLE RESTROOMS
5	EXISTING ACCESSIBLE DRINKING FOUNTAIN

**BUILDING LEGEND:**

ID	BUILDING USE	DSA APP #
A	ADMINISTRATION BUILDING	110826
B	MULTI-PURPOSE BUILDING	13333; 66965; 23191; 110826
C	CLASSROOM WING	9793; 49293; 23191; 110826
D	CLASSROOM WING	9793; 15333; 49293; 110826
E	CLASSROOM WING	23191; 66965; 110826
F	CLASSROOM WING	9793; 49293; 110826
G	HEALTH CENTER	02-112285
P1	PORTABLE BUILDING	65924
P2	PORTABLE BUILDING	54783
P3	PORTABLE BUILDING	63746
P4	PORTABLE BUILDING	63746
P5	PORTABLE BUILDING	101172
P6	PORTABLE BUILDING	101172

**NOTES:**

- DESIGN PROFESSIONAL IN GENERAL RESPONSIBLE CHARGE STATEMENT: THE PATH-OF-TRAVEL (P.O.T.) IDENTIFIED IN THESE CONSTRUCTION DOCUMENTS IS COMPLIANT WITH THE CURRENT APPLICABLE CALIFORNIA BUILDING CODE ACCESSIBILITY PROVISIONS FOR PATH OF TRAVEL REQUIREMENTS FOR ALTERATIONS, ADDITIONS AND STRUCTURAL REPAIRS. AS PART OF THE DESIGN OF THIS PROJECT, THE P.O.T. WAS EXAMINED AND ANY ELEMENTS, COMPONENTS OR PORTIONS OF THE P.O.T. THAT WERE DETERMINED TO BE NON-COMPLIANT 1) HAVE BEEN IDENTIFIED AND 2) THE CORRECTIVE WORK NECESSARY TO BRING THEM INTO COMPLIANCE HAS BEEN INCLUDED WITHIN THE SCOPE OF THIS PROJECT'S WORK THROUGH DETAILS, DRAWINGS, AND SPECIFICATIONS INCORPORATED INTO THESE CONSTRUCTION DOCUMENTS. ANY NON-COMPLIANT ELEMENTS, COMPONENTS OR PORTIONS OF THE P.O.T. THAT WILL NOT BE CORRECTED BY THIS PROJECT BASED ON VALUATION THRESHOLD LIMITATIONS OR A FINDING OF UNREASONABLE HARDSHIP ARE SO INDICATED IN THESE CONSTRUCTION DOCUMENTS.  
 DURING CONSTRUCTION, IF P.O.T. ITEMS WITHIN THE SCOPE OF THE PROJECT REPRESENTED AS CODE COMPLIANT ARE FOUND TO BE NON-COMPLYING BEYOND REASONABLE CONSTRUCTION TOLERANCES, THEY SHALL BE BROUGHT INTO COMPLIANCE WITH THE CBC AS A PART OF THIS PROJECT BY MEANS OF A CONSTRUCTION CHANGE DOCUMENT.
- THE ENGINEER HAS SURVEYED/INSPECTED THE PATH OF TRAVEL (P.O.T.) AS INDICATED ON THE PLANS AND HAS FOUND IT TO BE, OR HAS INDICATED ON THE PLANS REMEDIAL WORK WHICH WOULD CAUSE IT TO BE, A BARRIER FREE ACCESSIBLE ROUTE:
  - AT LEAST 48" IN WIDTH, OR AS APPROVED BY CODE, WITHOUT ABRUPT LEVEL CHANGES EXCEEDING 1/2" IF BEVELED AT 1:2 MAXIMUM SLOPE, OR VERTICAL LEVEL CHANGES EXCEEDING 1/4".
  - WITH A FIRM, STABLE, AND SLIP RESISTANT WALKING SURFACE, WITH A RUNNING SLOPE OF 1:20 OR LESS, UNLESS OTHERWISE INDICATED, AND A CROSS SLOPE OF 1:48 OR LESS.
  - IS FREE OF OVERHEAD OBSTRUCTIONS WITHIN 80" ABOVE THE WALKING SURFACE.
  - IS FREE OF OBJECTS WHICH PROTRUDE MORE THAN 4" BETWEEN THE HEIGHTS OF 27" AND 80" ABOVE THE WALKING SURFACE.
- PASSING SPACES (11B-403.5.3) OF 60"x60" MIN. ARE LOCATED NOT MORE THAN 200' APART. WALKS WITH CONTINUOUS GRADIENTS HAVE 60" IN LENGTH OF LEVEL AREAS (11B-403.7) NOT MORE THAN 400' APART. THERE IS NO DROP-OFF OVER 4" AT THE EDGE OF WALK OR LANDING UNLESS IDENTIFIED BY A GUARD, A HANDRAIL, OR WARNING CURB AT LEAST 6" IN HEIGHT ABOVE THE WALK (11B-303.5).



**Blair, Church & Flynn**  
 CONSULTING ENGINEERS

REGISTERED PROFESSIONAL  
 CIVIL ENGINEER  
 STATE OF CALIFORNIA  
 No. 67218  
 3/14/23  
 Date Signed

CONSULTANT  
 Blair, Church & Flynn  
 Consulting Engineers  
 455. Clovis Avenue,  
 Suite 500  
 Clovis, California 93612  
 Tel (559) 326-1400  
 Fax (559) 326-1500

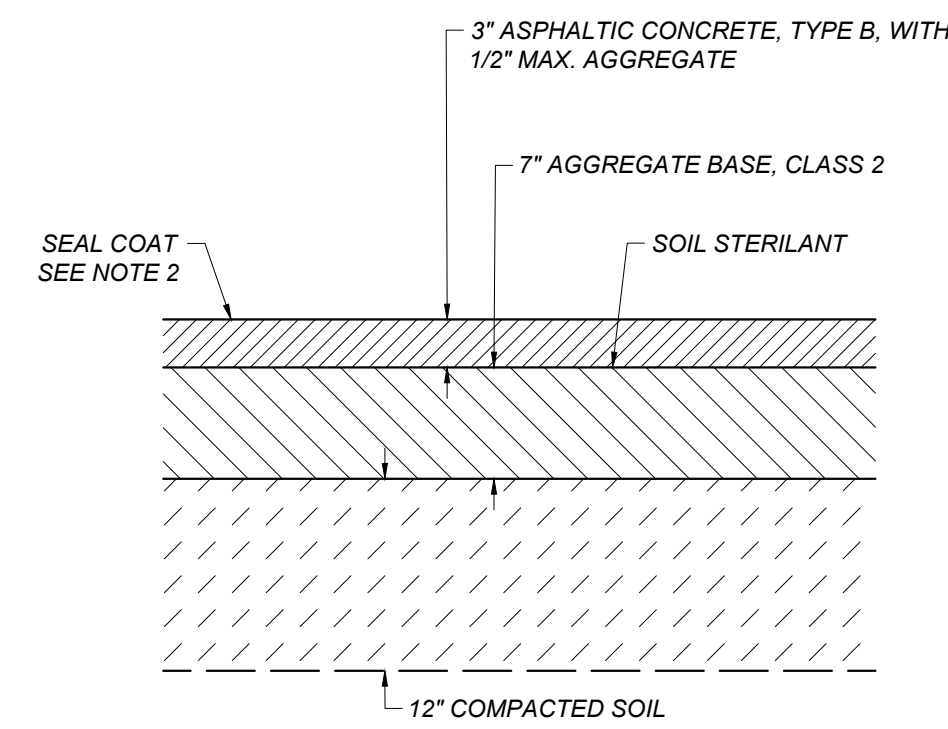
REF. & REV.  
 CLOVIS UNIFIED SCHOOL DISTRICT  
 2023 PAVEMENT REHABILITATION  
 VARIOUS SITES  
 SIERRA VISTA ELEMENTARY  
 ACCESS COMPLIANCE PLAN

CONST. DOCUMENTS  
 SV.C01  
 DR. BY: AH  
 CH. BY: JF  
 DATE: 01/21/2023  
 SCALE AS NOTED

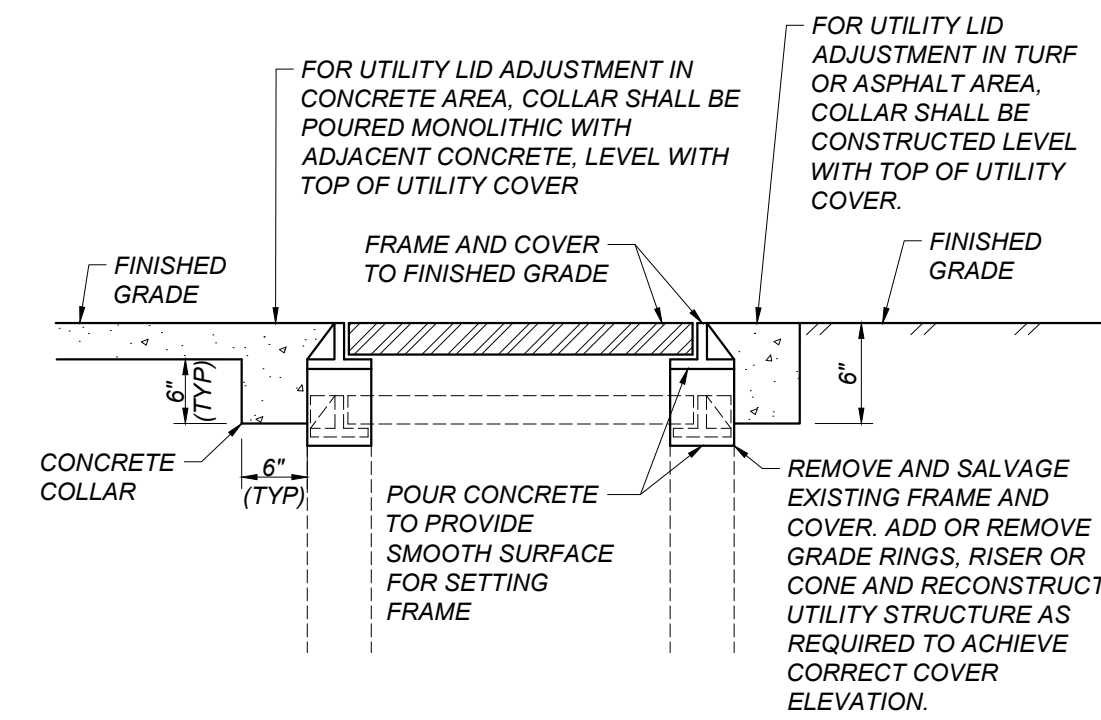
Drawing: P:\2023\03\2023\_Clovis Unified School District - Sierra Vista - Access Compliance Plan - SV.C01  
 Plot by: armpguzar - Mar 14, 2023 - 4:17pm



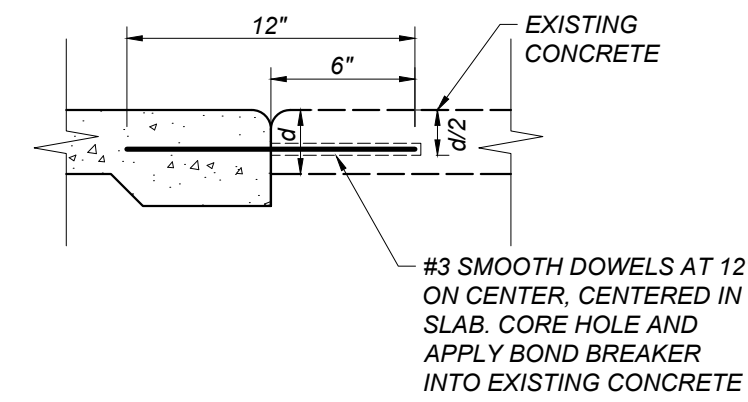
- NOTES:  
 1. CONTRACTOR MAY SUBSTITUTE THE SECTION SHOWN IN DETAIL, [D/SV.X10] FOR SMALL AREAS OF PAVEMENT REPLACEMENT  
 2. SEAL COAT IS ONLY APPLIED TO NEW PAVEMENT WHEN IT IS ADJACENT TO EXISTING PAVEMENT THAT IS RECEIVING A SEAL COAT



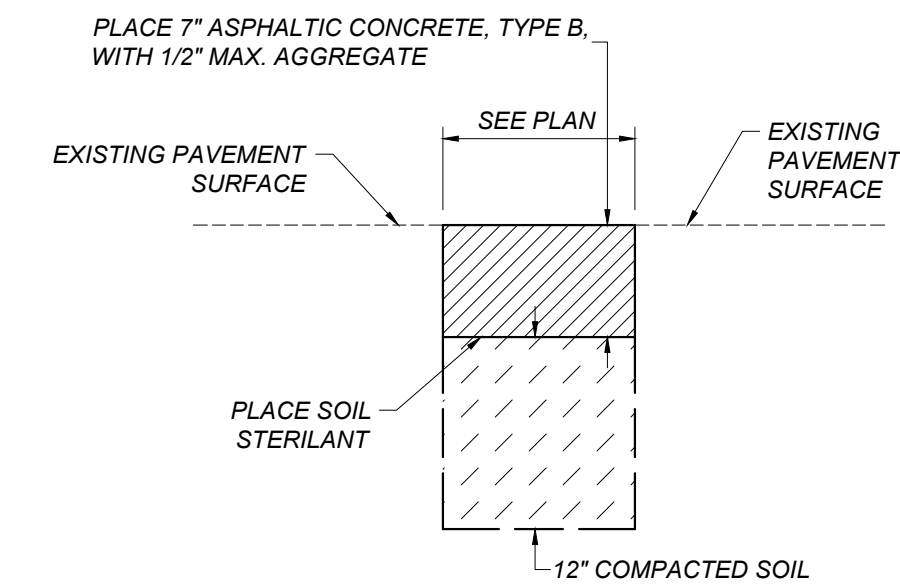
**A** ASPHALT CONCRETE PAVEMENT SECTION  
 SV.X10 NOT TO SCALE



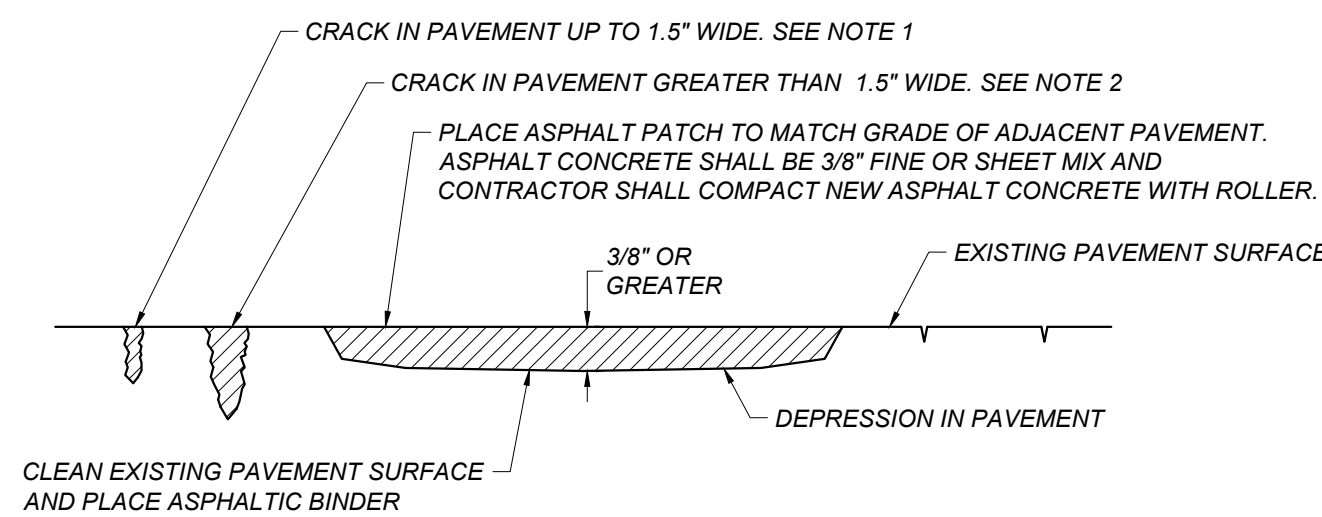
**B** ADJUST UTILITY LID  
 SV.X10 NOT TO SCALE



**C** DOWEL BAR DETAIL  
 SV.X10 NOT TO SCALE

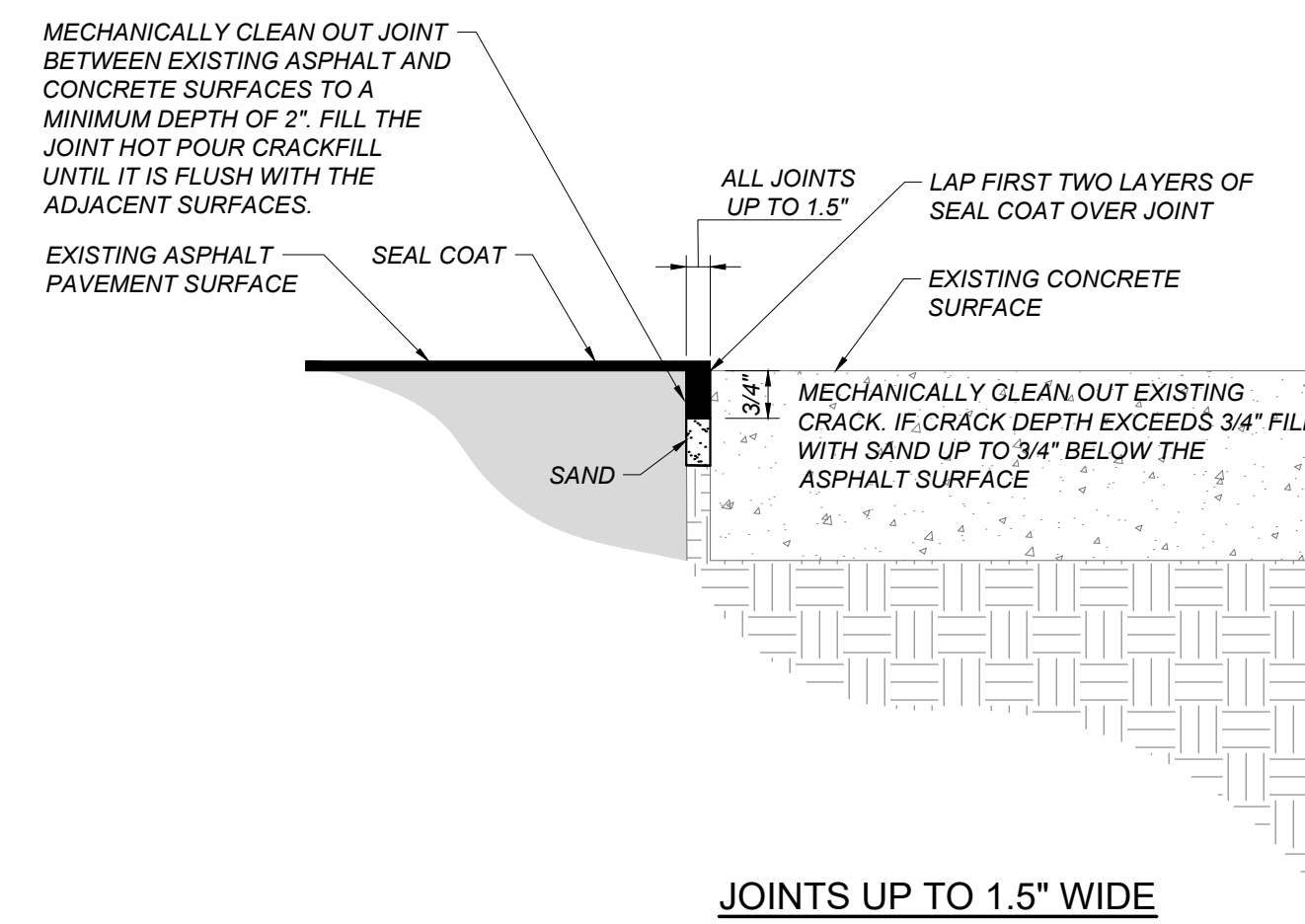


**D** ASPHALT CONCRETE PLUG  
 SV.X10 NOT TO SCALE

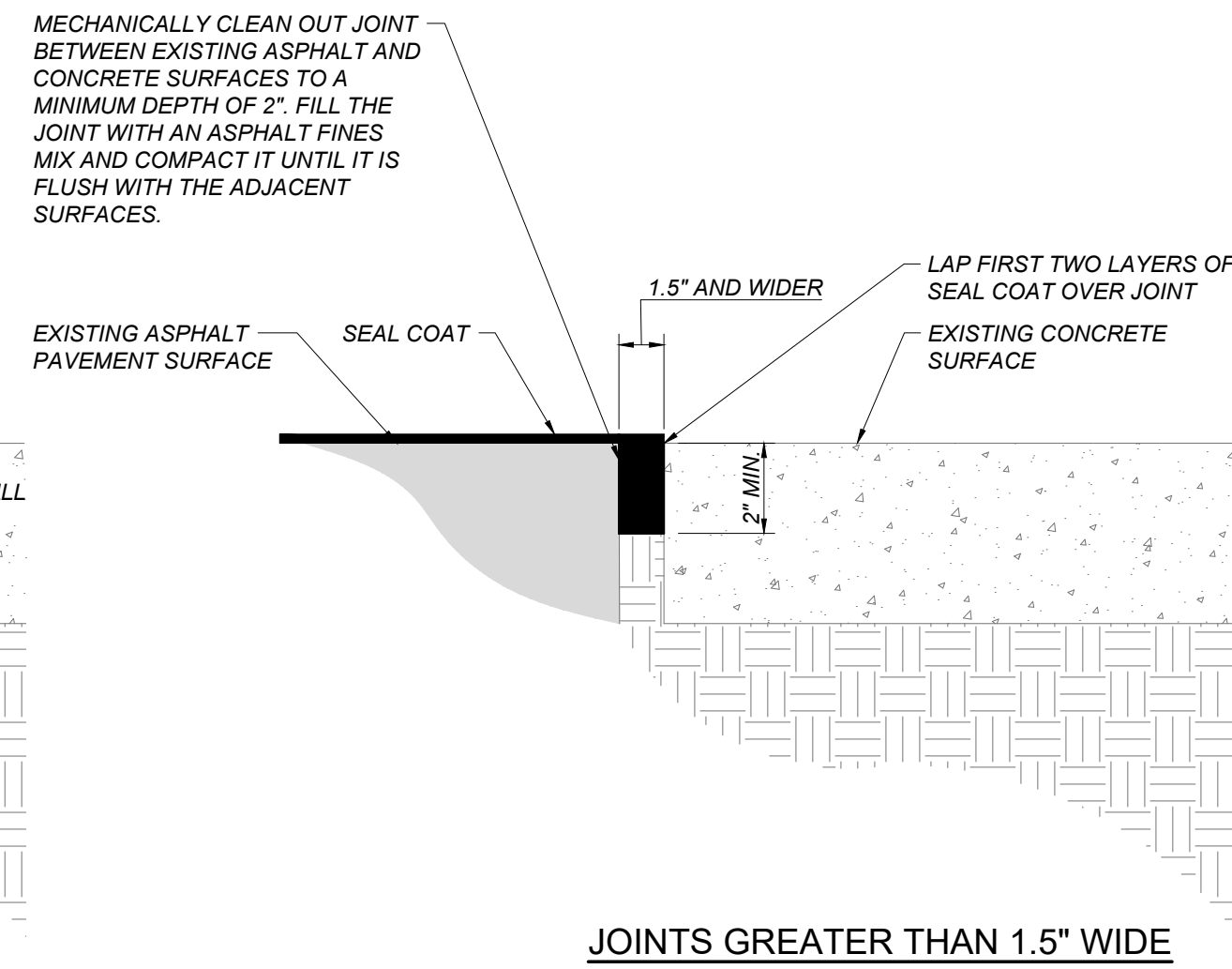


- NOTES:  
 1. FOR CRACKS UP TO 1.5" IN WIDTH, MECHANICALLY CLEAN OUT EXISTING CRACK. IF CRACK DEPTH EXCEEDS 3/4" FILL WITH SAND UP TO 3/4" BELOW THE ASPHALT SURFACE AND FILL WITH HOT POUR CRACK FILL IN ACCORDANCE WITH THE PROJECT SPECIFICATIONS AND THE MANUFACTURER'S RECOMMENDATIONS. CRACKFILL SHALL BE APPLIED UNTIL IT SETTLES FLUSH WITH ADJACENT PAVEMENT SURFACES.  
 2. FOR CRACKS GREATER THAN 1.5" IN WIDTH, MECHANICALLY CLEAN CRACK TO A MINIMUM DEPTH OF 2". FILL THE CRACK AN ASPHALT FINES MIX AND COMPACT IT UNTIL IT IS FLUSH WITH THE EXISTING ASPHALT SURFACE PRIOR TO SEAL COAT APPLICATION.  
 3. FOR CRACKS WITH EXISTING CRACK FILL, CLEAN CRACK PER DETAIL [G/SV.X10]

**E** CRACK PATCHING DETAIL  
 SV.X10 NOT TO SCALE



**F** ASPHALT EDGE CONDITION TREATMENT  
 SV.X10 NOT TO SCALE



**G** CRACK FILL CLEANING DETAIL  
 SV.X10 NOT TO SCALE

