

# CLOVIS UNIFIED SCHOOL DISTRICT

## 2023 PARKING LOT REHABILITATION IMPROVEMENTS AT CLOVIS WEST HIGH SCHOOL

IDENTIFICATION STAMP  
DIV. OF THE STATE ARCHITECT  
APP: 02-121173 INC:  
REVIEWED FOR  
SS  FLS  ACS   
DATE: 03/16/2023

FOR DSA USE ONLY  
DSA APP# 02-121173

### GENERAL SITE NOTES:

THE REQUIREMENTS AND INFORMATION SET OUT BELOW ARE PROVIDED FOR THE CONTRACTOR'S CONVENIENCE AND DO NOT ENCOMPASS ALL PROJECT REQUIREMENTS DESCRIBED BY THE PROJECT PLANS AND SPECIFICATIONS AND/OR APPLICABLE LAWS, REGULATIONS AND/OR BUILDING CODES.

- CONSTRUCTION OF ALL PROJECT SITE IMPROVEMENTS SUBJECT TO ADA ACCESS COMPLIANCE, INCLUDING ACCESSIBLE PATH OF TRAVEL, CURB RETURNS, PARKING STALL(S) AND UNLOADING AREAS, BARRIER FREE AMENITIES AND/OR OTHER APPLICABLE SITE IMPROVEMENTS SHALL CONFORM TO THE AMERICANS WITH DISABILITIES ACT, CALIFORNIA TITLE 24, AND THE CALIFORNIA BUILDING CODE, CURRENT EDITION(S).
- CONTRACTOR SHALL FIELD VERIFY ALL GRADES AND SLOPES PRIOR TO THE PLACEMENT OF CONCRETE AND/OR PAVEMENT FOR CONFORMANCE WITH ADA ACCESS COMPLIANCE REQUIREMENTS. EXAMPLES OF MINIMUM AND MAXIMUM LIMITS RELATED TO ADA ACCESS COMPLIANCE INCLUDE, BUT ARE NOT LIMITED TO:
  - ACCESSIBLE PATH OF TRAVEL CROSS-SLOPE SHALL NOT EXCEED 2%
  - ACCESSIBLE PATH OF TRAVEL LONGITUDINAL SLOPES SHALL NOT EXCEED 5%
  - RAMP LONGITUDINAL SLOPES SHALL NOT EXCEED 8.33%
  - WALKS SHALL NOT HAVE LESS THAN 48 INCHES IN UNOBSTRUCTED WIDTH
  - ACCESSIBLE PARKING SPACES AND ACCESS AISLES SHALL NOT EXCEED 2% SLOPE IN ANY DIRECTION
  - LANDINGS AT THE TOP AND BOTTOM OF ACCESSIBLE RAMPS SHALL NOT EXCEED 2% SLOPE IN ANY DIRECTION
  - GUTTERS AND ROAD SURFACES DIRECTLY ADJACENT TO AND WITHIN 2 FEET OF A CURB RAMP SHALL HAVE A COUNTER SLOPE NOT TO EXCEED 5%
  - OPEN PAVED PLAY AREAS SHALL NOT EXCEED 2% IN ANY DIRECTION
- CONTRACTOR MUST IMMEDIATELY NOTIFY THE ENGINEER OF RECORD, IDENTIFIED BY THE PROFESSIONAL ENGINEERING SEAL AND SIGNATURE ON THESE PLANS, OF ANY SITE CONDITION(S) AND/OR DESIGN INFORMATION THAT PREVENTS THE CONTRACTOR FROM COMPLYING WITH THE LAWS, REGULATIONS AND/OR BUILDING CODES GOVERNING ADA ACCESS COMPLIANCE.
- DRAINAGE SHALL NOT BE ALLOWED ONTO ADJACENT PROPERTY.
- ALL FILL MATERIAL USED SHALL BE PLACED IN COMPLIANCE WITH THE PROJECT SPECIFICATIONS. A SOILS COMPACTION REPORT SHALL BE SUBMITTED TO THE ENGINEER OF RECORD AS REQUIRED BY THE PROJECT SPECIFICATIONS.
- THE CONTRACTOR SHALL IMPLEMENT DUST CONTROL MEASURES AS REQUIRED BY THE PROJECT SPECIFICATIONS, AND BY GOVERNING PUBLIC AGENCIES.
- THE CONTRACTOR SHALL LOCATE ALL EXISTING UTILITIES PRIOR TO START OF ANY WORK.
- CONTRACTOR SHALL NOTIFY THE SCHOOL DISTRICT TO TURN OFF IRRIGATION A MINIMUM OF 2 DAYS PRIOR TO STARTING WORK. CONTRACTOR SHALL COORDINATE WITH THE SCHOOL DISTRICT THROUGHOUT THE COURSE OF THE PROJECT FOR WATERING AND NON-WATERING TIMES. CONTRACTOR SHALL NOTIFY THE DISTRICT AS SOON AS WORK IS COMPLETED TO THE POINT WHERE IRRIGATION SYSTEMS MAY BE TURNED BACK ON.
- ENSURE THAT ALL EXISTING STRIPING IS NOT VISIBLE AFTER APPLYING SEAL COAT AND PRIOR TO RESTRIPING AND REPAINTING. OTHERWISE, ADDITIONAL SEAL COAT APPLICATION MAY BE REQUIRED.
- PRIOR TO ACCEPTANCE OF NEW PAVING AND APPLICATION OF SEAL COAT AND/OR STRIPING, THE CONTRACTOR SHALL COMPLETE A WATER TEST OF THE NEW PAVEMENT WITH THE ENGINEER OF RECORD PRESENT TO VERIFY THAT NO LOW SPOTS OR "BIRD BATHS" ARE PRESENT, PER THE PROJECT SPECIFICATIONS.
- LAYOUT ALL PAVEMENT MARKINGS TO MATCH EXISTING UNLESS NOTED OTHERWISE ON PLANS.
- PAINT ALL CURBS AND WHEELSTOPS TO MATCH EXISTING WITHIN PROJECT LIMITS, UNLESS SHOWN OTHERWISE ON THE PLANS.
- ALL CONCRETE SHALL HAVE WEAKENED PLANE JOINTS AT 10 FEET OR LESS ON CENTER AND ONE HALF INCH PREMOULDED EXPANSION JOINTS AT 30 FEET OR LESS MINIMUM. MATCH EXISTING SCORE PATTERN DIMENSIONS ON ALL CONCRETE WALKS AND PAVEMENT.
- NO CONCRETE MAY BE POURED UNTIL ALL FORMS AND REINFORCEMENTS HAVE BEEN REVIEWED AND APPROVED BY THE PROJECT INSPECTOR.
- REPLACE ALL DAMAGED TURF AND IRRIGATION FACILITIES RESULTING FROM THE WORK REQUIRED.
- ADJUST ALL UTILITY LIDS TO FINISHED GRADE WITHIN CONSTRUCTION AREA PER DETAIL [E/CW.X10] UNLESS NOTED OTHERWISE. REMOVE AND REPLACE ALL BROKEN OR DAMAGED LIDS AND BOXES. ALL LIDS WITHIN TRAFFIC AREAS SHALL BE TRAFFIC RATED.
- ANY EXISTING UTILITIES AND/OR IMPROVEMENTS WHICH ARE TO REMAIN, THAT BECOME DAMAGED DURING CONSTRUCTION SHALL BE COMPLETELY RESTORED TO THE SATISFACTION OF THE OWNER AND AGENCY HAVING AUTHORITY, AT THE CONTRACTOR'S SOLE EXPENSE.
- ANY EXISTING UTILITIES AND/OR IMPROVEMENTS THAT BECOME DAMAGED DURING CONSTRUCTION SHALL BE COMPLETELY RESTORED TO THE SATISFACTION OF THE OWNER AND AGENCY HAVING AUTHORITY, AT THE CONTRACTOR'S SOLE EXPENSE.
- CONTRACTOR TO MATCH EXISTING PAVEMENT GRADE AT ALL NEW PAVEMENT LOCATIONS UNLESS NOTED OTHERWISE ON THE PLANS.
- ASPHALT CONCRETE REMOVAL AND REPLACEMENT LIMITS SHOWN ARE APPROXIMATE AND ARE BASED ON PAVEMENT CONDITIONS OBSERVED DURING A PRE-DESIGN SITE REVIEW. ADJUST LOCATIONS AND LIMITS AS REQUIRED BY ACTUAL FIELD CONDITIONS OR AS DIRECTED BY THE ENGINEER.
- INSTALL DOWELED CONNECTION AT JOINT OF NEW CONCRETE TO EXISTING CONCRETE PER DETAIL [F/CW.X10].
- TREAT ALL JOINTS BETWEEN EXISTING ASPHALT AND CONCRETE SURFACES PER DETAIL [C/CW.X20].

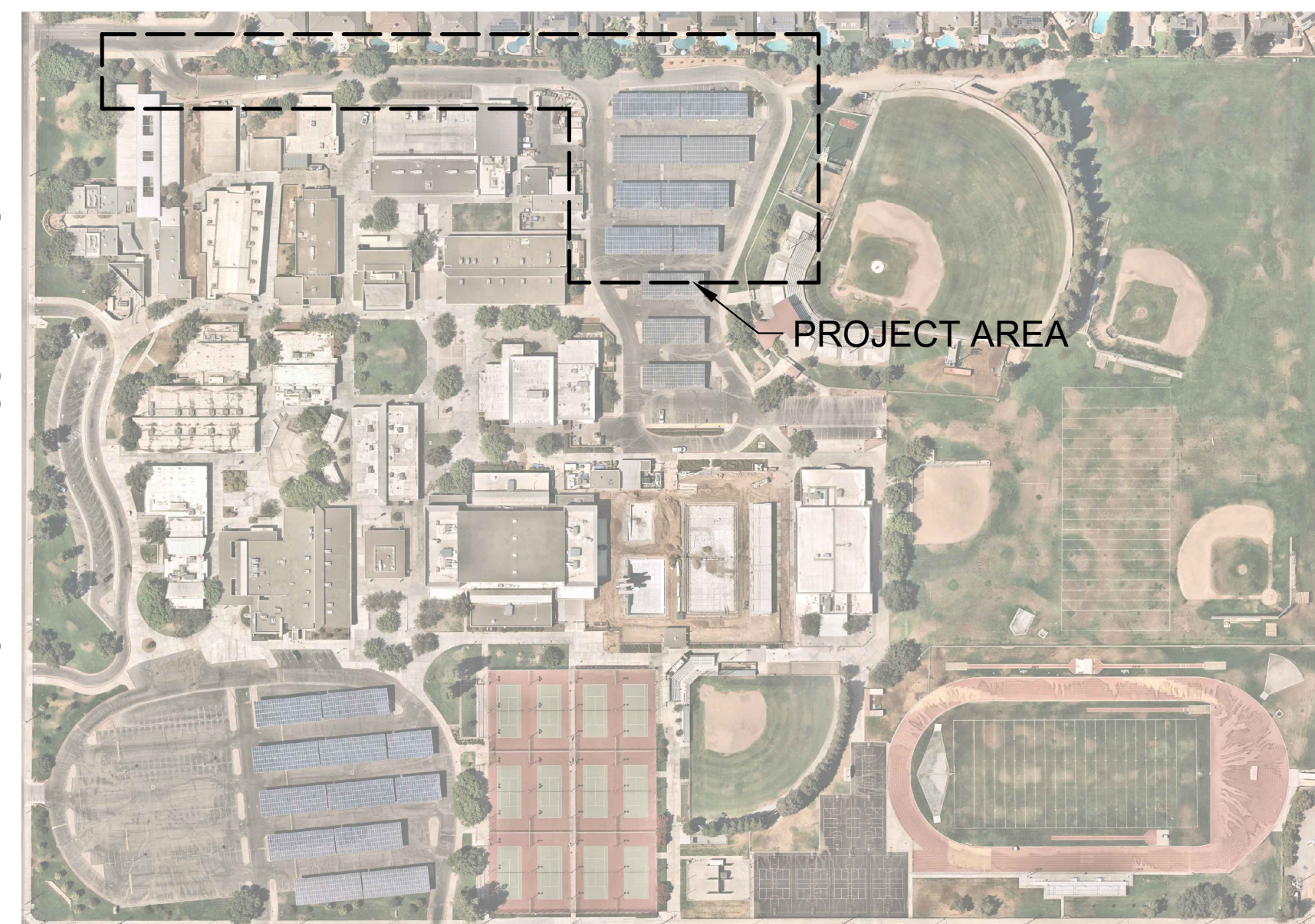
### GENERAL NOTES:

- ALL WORK SHALL BE DONE IN ACCORDANCE WITH THESE CONSTRUCTION DRAWINGS, THE CONTRACT SPECIFICATIONS AND, WHERE APPLICABLE, THE CITY STANDARDS AND THE STATE OF CALIFORNIA STANDARD SPECIFICATIONS.
- THE CONTRACTOR SHALL COORDINATE ALL CONSTRUCTION ACTIVITIES WITH THE SCHOOL DISTRICT'S USE OF THE FACILITIES AND OTHER CONTRACTORS WHO MAY BE DOING CONSTRUCTION WITHIN THE PROJECT SITE.
- THE CONTRACTOR SHALL CONTACT DISTRICT OFFICIALS FOR DETERMINATION OF DEPTH AND LOCATION OF UNDERGROUND UTILITIES PRIOR TO EXCAVATION IN THE PROJECT SITE.
- BEFORE COMMENCING WORK, THE CONTRACTOR SHALL NOTIFY ALL UTILITY AUTHORITIES OR UTILITY COMPANIES HAVING POSSIBLE INTEREST IN THE WORK OF THE CONTRACTOR'S INTENTION TO EXCAVATE PROXIMATE TO EXISTING FACILITIES AND THE CONTRACTOR SHALL VERIFY THE LOCATION OF ANY UTILITIES IN THE WORK AREA, NOTIFY U.S.A. AT 1(800) 642-2444, TWO (2) DAYS PRIOR TO EXCAVATION.
- ALL CONSTRUCTION SHALL CONFORM TO THE REQUIREMENTS OF THE MOST CURRENT CALIFORNIA BUILDING CODE (CBC).
- CHANGES TO THE APPROVED DRAWINGS AND SPECIFICATIONS SHALL BE MADE BY ADDENDA OR CONSTRUCTION CHANGE DOCUMENT (CCD) APPROVED BY DSA, AS REQUIRED BY SECTION 4-338, PART 1, TITLE 24, CCR.
- A "DSA CERTIFIED" CLASS 3 PROJECT INSPECTOR EMPLOYED BY THE DISTRICT (OWNER) AND APPROVED BY DSA SHALL PROVIDE CONTINUOUS INSPECTION OF THE WORK. THE DUTIES OF THE INSPECTOR ARE DEFINED IN SECTION 4-342, PART 1, TITLE 24, CCR.
- A DSA-ACCEPTED TESTING LABORATORY DIRECTLY EMPLOYED BY THE DISTRICT (OWNER) SHALL CONDUCT ALL THE REQUIRED TESTS AND INSPECTIONS FOR THE PROJECT.
- THE INTENT OF THESE DRAWINGS AND SPECIFICATIONS IS THAT THE WORK OF THE ALTERATION, REHABILITATION OR RECONSTRUCTION SHALL BE IN ACCORDANCE WITH TITLE 24, CCR. SHOULD ANY EXISTING CONDITIONS SUCH AS DETERIORATION OR NON-COMPLYING CONSTRUCTION BE DISCOVERED WHICH IS NOT COVERED BY THE CONTRACT DOCUMENTS WHEREIN THE FINISHED WORK WILL NOT COMPLY WITH TITLE 24, CCR, A CONSTRUCTION CHANGE DOCUMENT (CCD), OR A SEPARATE SET OF PLANS AND SPECIFICATIONS, DETAILING AND SPECIFYING THE REQUIRED WORK SHALL BE SUBMITTED TO AND APPROVED BY DSA BEFORE PROCEEDING WITH THE WORK (SECTION 4-317(C), PART 1, TITLE 24, CCR).
- GRADING PLANS, DRAINAGE IMPROVEMENTS, ROAD AND EMERGENCY ACCESS REQUIREMENTS AND ENVIRONMENTAL HEALTH CONSIDERATIONS SHALL COMPLY WITH ALL LOCAL ORDINANCES.

### GENERAL DEMOLITION NOTES:

- THE "LIMIT OF DEMOLITION" SHOWN IS APPROXIMATE AND IS GENERALLY CONSIDERED TO BE THE MINIMUM REMOVAL REQUIREMENTS. CONTRACTOR MUST COORDINATE AS NOTED IN THE LEGEND.
- CONTRACTOR SHALL LEGALLY DISPOSE OF ALL DEMOLISHED MATERIALS OFF SITE.
- CONTRACTOR SHALL PROTECT ALL EXISTING UTILITY IMPROVEMENTS NOT SPECIFICALLY DESIGNATED FOR REMOVAL.
- THE ON-SITE UNDERGROUND UTILITIES SHOWN ON THIS SHEET ARE AT APPROXIMATE LOCATIONS. THE EXTENT, LOCATIONS AND SIZES ARE UNKNOWN. THE CONTRACTOR SHALL POthOLE TO LOCATE AND VERIFY THE UNDERGROUND UTILITY LINES PRIOR TO REMOVAL.
- CONTRACTOR TO PROTECT AND PRESERVE IN PLACE ANY FOUND SURVEY MONUMENTS. ANY MONUMENTS DISTURBED SHALL BE RESET BY A CALIFORNIA LICENSED SURVEYOR AND THE APPROPRIATE PAPERWORK FILED WITH THE CITY OR COUNTY, AT CONTRACTOR'S EXPENSE.
- ALL HAZARDOUS MATERIALS ENCOUNTERED DURING SITE DEMOLITION SHALL BE REMEDIATED AND DISPOSED OF PER STATE AND EPA REQUIREMENTS.
- REMOVE EXISTING IMPROVEMENTS AS NECESSARY TO CONSTRUCT NEW IMPROVEMENTS SHOWN ON THESE PLANS.
  - FOR CONCRETE REMOVAL, REMOVE TO THE NEXT NEAREST TOOLED JOINT OR EXPANSION JOINT OF IMPROVEMENTS DESIGNATED TO REMAIN.
  - FOR ASPHALTIC PAVEMENT REMOVAL, SAWCUT TO A STRAIGHT, CLEAN EDGE AT LOCATIONS INDICATED ON THE PLANS.
- REMOVE ALL WHEELSTOPS PRIOR TO SEAL COAT APPLICATION

NORTH MILLBROOK AVENUE



EAST TEAGUE AVE

### SITE MAP

NOT TO SCALE

### SITE ADDRESS:

CLOVIS WEST HIGH SCHOOL  
1070 E TEAGUE AVENUE  
FRESNO, CA 93720

### PROJECT CONTACTS:

OWNER: CLOVIS UNIFIED SCHOOL DISTRICT  
1450 HERNDON AVE  
CLOVIS, CA 93611  
PHONE: (559) 327-9000

CIVIL ENGINEER: BLAIR, CHURCH & FLYNN  
CONSULTING ENGINEERS  
451 CLOVIS AVE., SUITE 200  
CLOVIS, CA 93612  
PHONE: (559) 326-1400

### SCOPE OF WORK:

- ASPHALT CONCRETE REMOVAL AND REPLACEMENT, AND RE-STRIPE EXISTING PARKING LOT.

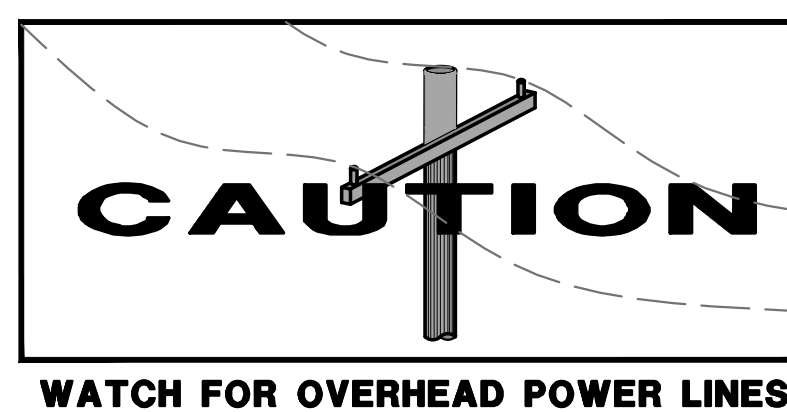
### APPLICABLE CODES:

2022 CALIFORNIA ADMIN. CODE, TITLE 24, PART 1, CCR  
2022 CALIFORNIA BUILDING CODE, TITLE 24, PART 2, CCR

### TABLE OF CONTENTS

SHEET NUMBER	SHEET TITLE
CW.C00	COVER SHEET
CW.C01	ACCESS COMPLIANCE PLAN
CW.C10	TOPOGRAPHIC SURVEY LEGEND
CW.C11	TOPOGRAPHIC SURVEY
CW.C12	TOPOGRAPHIC SURVEY
CW.C20	DEMOLITION PLAN
CW.C21	DEMOLITION PLAN
CW.C30	SITE PLAN
CW.C31	SITE PLAN
CW.X10	DETAILS
CW.X20	DETAILS

TOTAL SHEET COUNT: 11



Know what's below.  
Call before you dig.

Blair, Church & Flynn  
CONSULTING ENGINEERS

3/14/23 Date Signed

CONSULTANT	REF. & REV.
Blair, Church & Flynn Consulting Engineers 451 Clovis Avenue, Suite 200 Clovis, California 93612 Tel (559) 326-1400 Fax (559) 326-1500	

CLOVIS UNIFIED SCHOOL DISTRICT	
2023 PAVEMENT REHABILITATION VARIOUS SITES CLOVIS WEST HIGH SCHOOL COVER SHEET	CONST. DOCUMENTS DR. BY: AH CH. BY: JF DATE: 01/21/2023 SCALE AS NOTED
	CW.C00

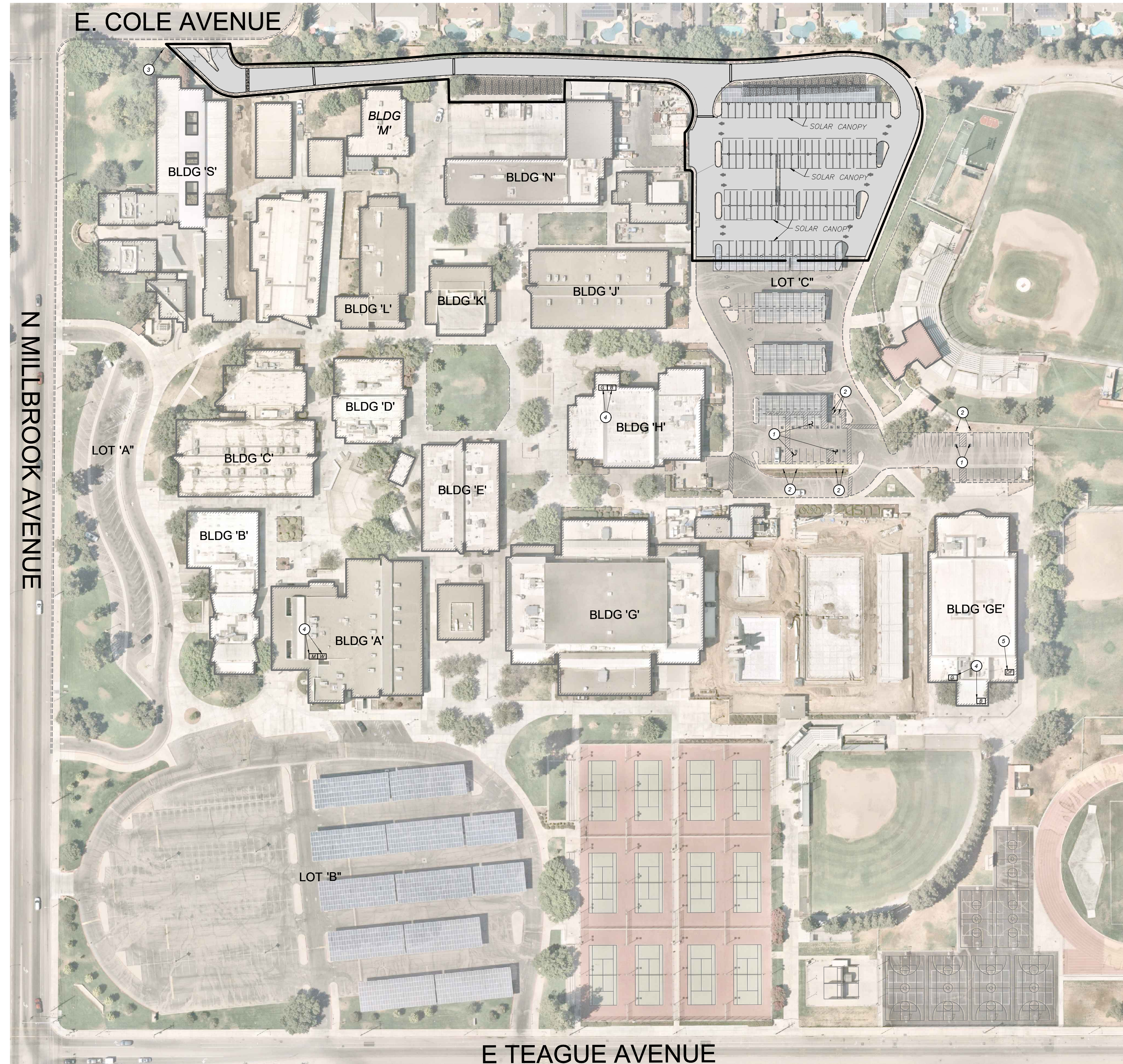
C:\Users\jflynn\OneDrive\Documents\2023\20230314\_ClovisWestHighSchool\_ParkingLotRehab\DWG\CW.C00.DWG



IDENTIFICATION STAMP  
 DIV. OF THE STATE ARCHITECT  
 APP: 02-121173 INC:  
 REVIEWED FOR  
 SS  FLS  ACS   
 DATE: 03/16/2023

FOR DSA USE ONLY

DSA APP# 02-121173



**BUILDING LEGEND:**

ID	BUILDING USE	DSA APP #
A	ADMINISTRATION	37205, 02-80112, 02-101355, 02-111193, 02-112732
B	CLASSROOMS	37205, 02-80112, 02-101355, 02-111193, 02-113205, 02-116110
C	CLASSROOMS	37205, 02-80112, 02-101355, 02-112732, 02-111193
D	LIBRARY	62585, 02-101355, 02-111193, 02-113205, 02-116110
E	CLASSROOMS	37205, 02-80117, 02-101355, 02-111193
G	WEST GYM	37205, 02-101355, 02-106950, 02-112732, 02-111193
GE	EAST GYM	58832, 02-111193, 02-113205, 02-116110
H	CAFETERIA	38587, 02-80112, 02-101355, 02-111193
J	CLASSROOMS	38587, 02-80112, 02-101355, 02-112732, 02-111193
L	SHOP	37205, 02-104325, 02-101355, 02-111193
M	CLASSROOMS	38587, 02-101355, 02-111193
N	AUTO SHOP	38587, 02-101355, 02-109748
S	CLASSROOMS	58832, 02-101355, 02-111193

**SITE LEGEND:**

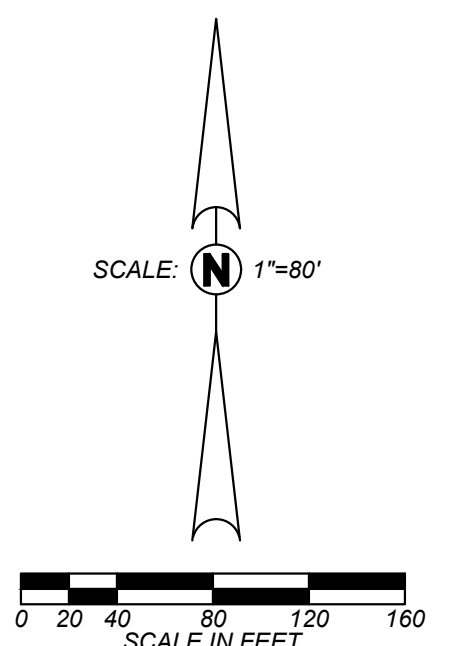
Symbol	LIMITS OF WORK
[M]	EXISTING ACCESSIBLE MEN'S RESTROOM PER DSA APP# 02-112732
[W]	EXISTING ACCESSIBLE WOMEN'S RESTROOM PER DSA APP# 02-112732
[B]	EXISTING ACCESSIBLE BOYS RESTROOM PER DSA APP# 02-116110
[G]	EXISTING ACCESSIBLE GIRL'S RESTROOM DSA APP# 02-116110
[DF]	EXISTING ACCESSIBLE DRINKING FOUNTAIN DSA APP# 02-116110
①	EXISTING ACCESSIBLE PARKING STALLS PER DSA APP# 02-118054
②	EXISTING ACCESSIBLE PARKING SIGNAGE PER DSA APP# 02-118054
③	EXISTING TOW AWAY ENTRY SIGN PER DSA APP# 02-118054
④	EXISTING ACCESSIBLE RESTROOMS
⑤	EXISTING ACCESSIBLE DRINKING FOUNTAIN

**NOTES:**

- DESIGN PROFESSIONAL IN GENERAL RESPONSIBLE CHARGE STATEMENT: THE PATH OF TRAVEL (P.O.T.) IDENTIFIED IN THESE CONSTRUCTION DOCUMENTS IS COMPLIANT WITH THE CURRENT APPLICABLE CALIFORNIA BUILDING CODE ACCESSIBILITY PROVISIONS FOR PATH OF TRAVEL REQUIREMENTS FOR ALTERATIONS, ADDITIONS AND STRUCTURAL REPAIRS. AS PART OF THE DESIGN OF THIS PROJECT, THE P.O.T. WAS EXAMINED AND ANY ELEMENTS, COMPONENTS OR PORTIONS OF THE P.O.T. THAT WERE DETERMINED TO BE NON-COMPLIANT 1) HAVE BEEN IDENTIFIED AND 2) THE CORRECTIVE WORK NECESSARY TO BRING THEM INTO COMPLIANCE HAS BEEN INCLUDED WITHIN THE SCOPE OF THIS PROJECT'S WORK THROUGH DETAILS, DRAWINGS, AND SPECIFICATIONS INCORPORATED INTO THESE CONSTRUCTION DOCUMENTS. ANY NON-COMPLIANT ELEMENTS, COMPONENTS OR PORTIONS OF THE P.O.T. THAT WILL NOT BE CORRECTED BY THIS PROJECT BASED ON VALUATION THRESHOLD LIMITATIONS OR A FINDING OF UNREASONABLE HARDSHIP ARE SO INDICATED IN THESE CONSTRUCTION DOCUMENTS.  
 DURING CONSTRUCTION, IF P.O.T. ITEMS WITHIN THE SCOPE OF THE PROJECT REPRESENTED AS CODE COMPLIANT ARE FOUND TO BE NON-COMPLYING BEYOND REASONABLE CONSTRUCTION TOLERANCES, THEY SHALL BE BROUGHT INTO COMPLIANCE WITH THE CBC AS A PART OF THIS PROJECT BY MEANS OF A CONSTRUCTION CHANGE DOCUMENT.
- THE ENGINEER HAS SURVEYED/INSPECTED THE PATH OF TRAVEL (P.O.T.) AS INDICATED ON THE PLANS AND HAS FOUND IT TO BE, OR HAS INDICATED ON THE PLANS REMEDIAL WORK WHICH WOULD CAUSE IT TO BE, A BARRIER FREE ACCESSIBLE ROUTE:
  - AT LEAST 48" IN WIDTH, OR AS APPROVED BY CODE, WITHOUT ABRUPT LEVEL CHANGES EXCEEDING 1/2" IF BEVELED AT 1:2 MAXIMUM SLOPE, OR VERTICAL LEVEL CHANGES EXCEEDING 1/4".
  - WITH A FIRM, STABLE, AND SLIP RESISTANT WALKING SURFACE, WITH A RUNNING SLOPE OF 1:20 OR LESS, UNLESS OTHERWISE INDICATED, AND A CROSS SLOPE OF 1:48 OR LESS.
  - IS FREE OF OVERHEAD OBSTRUCTIONS WITHIN 80" ABOVE THE WALKING SURFACE
  - IS FREE OF OBJECTS WHICH PROTRUDE MORE THAN 4" BETWEEN THE HEIGHTS OF 27" AND 80" ABOVE THE WALKING SURFACE.
- PASSING SPACES (11B-403.5.3) OF 60"x60" MIN. ARE LOCATED NOT MORE THAN 200' APART. WALKS WITH CONTINUOUS GRADIENTS HAVE 60" IN LENGTH OF LEVEL AREAS (11B-403.7) NOT MORE THAN 400' APART. THERE IS NO DROP-OFF OVER 4" AT THE EDGE OF WALK OR LANDING UNLESS IDENTIFIED BY A GUARD, A HANDRAIL, OR WARNING CURB AT LEAST 6" IN HEIGHT ABOVE THE WALK (11B-303.5).

**PARKING CALCULATIONS:**

LOT#	DSA APP #	TOTAL STALLS PROVIDED (INCLUDES ACCESSIBLE STALLS)	ACCESSIBLE STALLS PROVIDED	ACCESSIBLE STALLS REQUIRED PER CBC 11-B208.2
C	THIS APPLICATION, 02-118054	305	14 TOTAL, 4 VAN	8 TOTAL, 2 VAN



**Blair, Church & Flynn**  
 CONSULTING ENGINEERS  
 452 Clovis Avenue, Suite 200  
 Clovis, California 93612  
 Tel (559) 326-1400  
 Fax (559) 326-1500

3/14/23  
 Date Signed

CONSULTANT	REF. & REV.	CLOVIS UNIFIED SCHOOL DISTRICT	
Blair, Church & Flynn Consulting Engineers 452 Clovis Avenue, Suite 200 Clovis, California 93612 Tel (559) 326-1400 Fax (559) 326-1500		2023 PAVEMENT REHABILITATION VARIOUS SITES CLOVIS WEST HIGH SCHOOL ACCESS COMPLIANCE PLAN	CONST. DOCUMENTS CW.C01
		DR. BY: AH CH. BY: [Signature] DATE: 01/21/2023 SCALE AS NOTED	



**GENERAL TOPOGRAPHIC SURVEY LEGEND:**

(NOT ALL SYMBOLS SHOWN APPEAR ON THE PLANS)

AB	ABUTMENT	NPTH	NON-POTABLE TRENCH	BO	BOLLARD	SL	STREET LIGHT	W 6"	WATER LINE; SIZE AS NOTED
AC	ASPHALTIC CONCRETE	PA	PATIO	CO	CLEANOUT	4" SLE	PIPE SLEEVE; DIAMETER AS SHOWN	AG 12"	AGRICULTURAL IRRIGATION LINE; SIZE AS NOTED
ACE	ASPHALTIC CONCRETE EDGE	PGTH	PROPANE GAS TRENCH	COPI	COMMUNICATION PULLBOX	SLPB	SLOPE	A 1"	AIR LINE; SIZE AS NOTED
AD	ASPHALTIC CONCRETE DIKE	POS	POINT ON SLOPE	CV4	COMMUNICATION VAULT	SLV	STREET LIGHT PULLBOX	C	COMMUNICATION LINE
AWT	ALL-WEATHER TRACK	RCP	REINFORCED CONCRETE	12.55	SURVEY CONTROL MONUMENT	4" SLE	PIPE SLEEVE; DIAMETER AS SHOWN	350	MAJOR GRADE CONTOUR LINE
BD	BRIDGE DECK	RIEL	RIPARIAN EDGE OF LAKE	DF	DRINKING FOUNTAIN	SP	SEWER MANHOLE	345	MINOR GRADE CONTOUR LINE
BFC	BOTTOM FACE OF CURB	RIEP	RIPARIAN EDGE OF POND	DS	DOORSTOP	SPB	SERVICE POLE	CW 2"	CHILLED WATER LINE; SIZE AS NOTED
BGST	STEPS	RIES	RIPARIAN EDGE OF STREAM	DW	DRYWELL	SPR	SIGNAL PULLBOX	CWR 2"	CHILLED WATER RETURN LINE; SIZE AS NOTED
BGTR	TOP OF ROOF	RIEW	RIPARIAN EDGE OF WETLAND	EG	ELECTRICAL GROUND	SPD	SPRINKLER	CWS 2"	CHILLED WATER SUPPLY LINE; SIZE AS NOTED
BGV	BUILDING VENTS	RIFL	RIPARIAN FLOWLINE	ELC	ELECTRICAL CONDUIT	SS	STEEL POST; DIAMETER AS SHOWN	---	LIMIT OF DIRT
BOO	BOTTOM OF DITCH	RIMC	RIPARIAN MISC.	E	ELECTRICAL METER	24" STP	SAND SEPARATOR; SIZE AS NOTED	---	LIMIT OF TURF
BR	BARRICADE	RIP	RIP-RAP SLOPE PROTECTION	EPB	ELECTRICAL PULLBOX	12" STAMP	STAND PIPE; DIAMETER AS NOTED	DL 1"	DRAIN LINE; SIZE AS NOTED
BRK	BRICK	RK	ROCK	E	ELECTRICAL VAULT LID	MW	TREE STUMP; DIAMETER AS SHOWN	EMS	EMERGENCY MANAGEMENT SYSTEM
BW	BARRIER WALL	RW	RETAINING WALL	ETS	GAS ELECTRONIC TESTING STATION	TEL	SURVEY MONUMENT WELL	FA	FIRE ALARM LINE
CB	CATCH BASIN	SB	SPEED BUMP	FDC	FIRE DEPARTMENT CONNECTION	TEL	TELEPHONE; DIAMETER AS SHOWN	F 6"	FIRE LINE; SIZE AS NOTED
CD4	CONCRETE DRIVE APPROACH	SDCD	STORM DRAIN CROSS DRAIN	FD	FIRE HYDRANT	TV	TELEPHONE MANHOLE	FO	FIBER OPTIC LINE
CD4	CONCRETE DRIVE APPROACH	SDFL	STORM DRAIN FLOWLINE	FP	FENCE POST	TP	TENNIS NET POLE	---	DRAIN TUBE
CE	CONCRETE EDGE	SDGR	STORM DRAIN GRATE	FPD	FLAG POLE	TPB	TELEPHONE POLE	HW 2"	HOT WATER LINE; SIZE AS NOTED
CMP	CORRUGATED METAL PIPE	SDMG	STORM DRAIN MANHOLE W/ GRATE	GAS	GAS LINE; DIAMETER AS SHOWN	TPB	TELEPHONE PULLBOX	HW 2"	HOT WATER RETURN LINE; SIZE AS NOTED
CON	CONCRETE	SSFL	SEWER FLOWLINE	GR	GAS REGULATOR	TPB	TELEVISION PULLBOX	HWS 2"	HOT WATER SUPPLY LINE; SIZE AS NOTED
COTH	COMMUNICATION TRENCH	SDTH	STORM DRAIN TRENCH	GAV	IRRIGATION GATE VALVE	TPB	TELEVISION PULLBOX	HYD	HYDRAULIC LINE
CR	CROWN OF ROAD	SSGT	STORM DRAIN GREASE TRAP	GVS	GAS VALVE	TPB	TELEVISION PULLBOX	ID 18"	IRRIGATION DISTRICT; SIZE AS NOTED
CRD	QUARTER CROWN	SSST	SEWER TANK (SEPTIC)	GDP	GOAL POST	TPB	TELEVISION PULLBOX	IR 2"	IRRIGATION MAIN LINE; SIZE AS NOTED
CS	CONCRETE SLAB	SSTH	SEWER TRENCH	GP	GUY POLE	TPB	TELEVISION PULLBOX	L 1"	IRRIGATION LATERAL LINE; SIZE AS NOTED
CULV	CULVERT	SWK	SIDEWALK	GR	GRATE; DIAMETER AS SHOWN	TPB	TELEVISION PULLBOX	ITS	INTELLIGENT TRAFFIC SYSTEM
CW	CONCRETE WALL	SWL	SWALE	GS	GATE STOP	TPB	TELEVISION PULLBOX	JT	JOINTLY TRENCHED UTILITIES
DD	DOWN DRAIN	TBC	TOP BACK OF CURB	GRS	GAS RISER	TPB	TELEVISION PULLBOX	OC	OVERHEAD COMMUNICATIONS LINE
DFL	DITCH FLOWLINE	TBW	TOP BACK OF WALK	GV	GAS VALVE	TPB	TELEVISION PULLBOX	OE	OVERHEAD ELECTRIC LINE
DWY	DRIVEWAY	TF	TOP OF FOOTING	GRD	GROUNDING ROD	TPB	TELEVISION PULLBOX	DEC	OVERHEAD ELECTRIC AND COMMUNICATION LINE
ECTH	ELECTRICAL TRENCH	TFC	TOP FACE OF CURB	GUY	GUY WIRE	TPB	TELEVISION PULLBOX	DET	OVERHEAD ELECTRIC AND TELEPHONE LINE
EGR	EDGE OF DIRT ROAD	TFW	TOP FACE OF WALK	HB	HOSE BIBB	TPB	TELEVISION PULLBOX	DET	OVERHEAD ELECTRIC AND TELEVISION LINE
EGR	EDGE OF GRAVEL ROAD	TLTH	TELEPHONE TRENCH	HR	HANDRAIL	TPB	TELEVISION PULLBOX	DET	OVERHEAD ELECTRIC, TELEVISION AND TELEPHONE LINE
EOD	EDGE OF OILED DIRT	TOB	TOP OF BANK	IR	IRRIGATION CONTROLLER	TPB	TELEVISION PULLBOX	DT	OVERHEAD TELEVISION LINE
EP	EDGE OF PAVEMENT	TOE	TOE OF SLOPE	ICB	IRRIGATION DISTRICT MANHOLE	TPB	TELEVISION PULLBOX	OU	OVERHEAD UTILITY LINE
ES	EDGE OF SHOULDER	TOP	TOP OF SLOPE	IR	IRRIGATION REMOTE CONTROL VALVE	TPB	TELEVISION PULLBOX	P 6"	PETROLEUM LINE; SIZE AS NOTED
ET	EDGE OF TRAVELED WAY	TRDO	TRUNCATED DOMES	IR	IRRIGATION SPICE BOX	TPB	TELEVISION PULLBOX	RW 3"	RECYCLED WATER IRRIGATION LINE; SIZE AS NOTED
FF	FINISH FLOOR	TVTH	TV TRENCH	IR	IN-GROUND HOSE BIBB	TPB	TELEVISION PULLBOX	S&SD 6"	SEWER AND STORM DRAIN LINE; SIZE AS NOTED
FOTH	FIBER OPTIC TRENCH	TW	TOP OF WALL	IP	IRON PIPE	TPB	TELEVISION PULLBOX	SPV 6"	SEWER FORCE MAIN; SIZE AS NOTED
GB	GRADE BREAK	UTH	UNIDENTIFIED TRENCH/SCAR LINE	JP	JOINT UTILITY POLE	TPB	TELEVISION PULLBOX	ST 2"	STEAM LINE; SIZE AS NOTED
GFL	GUTTER FLOWLINE	VGFL	VALLEY GUTTER FLOWLINE	LP	LIGHT POLE	TPB	TELEVISION PULLBOX	TFO	TRAFFIC FIBER OPTIC LINE
GRA	GRAVEL SPOT SHOT	VGR	VALLEY GUTTER	MB	MAIL BOX	TPB	TELEVISION PULLBOX	TS	TRAFFIC SIGNAL LINE
GRAE	EDGE OF GRAVEL	WALBA	BARRIER WALL	MH	MANHOLE	TPB	TELEVISION PULLBOX	TV	TELEVISION LINE
GSTH	GAS TRENCH	WALBW	BLOCK WALL	MI	MANUAL IRRIGATION VALVE	TPB	TELEVISION PULLBOX	UNK	UNKNOWN UTILITY LINE
HDR	WOOD HEADER	WALCW	CONCRETE WALL	PIB	PULLBOX	TPB	TELEVISION PULLBOX	X X	WIRE FENCE
HW	HEAD WALL	WALHW	HEAD WALL	PIV	POST INDICATOR VALVE	TPB	TELEVISION PULLBOX	---	PROPERTY LINE
KR	K-RAIL	WALRW	RETAINING WALL	ST	UTILITY STUB	TPB	TELEVISION PULLBOX	---	CITY LIMIT
LIP	LIP OF GUTTER	WALWW	WING WALL	PM	PARKING METER	TPB	TELEVISION PULLBOX	---	EASEMENT 1
LSDE	DECOMPOSED GRANITE EDGE	WCR	WHEELCHAIR RAMP	PCST	POST; DIAMETER AS SHOWN	TPB	TELEVISION PULLBOX	---	EASEMENT 2
LSDG	DECOMPOSED GRANITE	WLPD	WELL PAD	PP	POWER POLE	TPB	TELEVISION PULLBOX	---	RIGHT-OF-WAY LINE
LSGC	GROUND COVER	WTH	WATER TRENCH	PVC	PVC PIPE; DIAMETER AS SHOWN	TPB	TELEVISION PULLBOX	---	RIGHT-OF-WAY CENTER LINE
LSGF	GOLF COURSE FAIRWAY	WW	WING WALL	QC	QUICK COUPLER VALVE	TPB	TELEVISION PULLBOX	---	SETBACK LINE
LSGG	GOLF COURSE GREEN	(232.21)	EXISTING ELEVATION	RD	ROOF DRAIN	TPB	TELEVISION PULLBOX		
LSGT	GOLF COURSE TEE	AL	ACCENT LIGHT	RDU	ROOF DRAIN UNDERGROUND	TPB	TELEVISION PULLBOX		
LSLN	TURF	AV	ALFALFA VALVE	RS	ROOF SUPPORT	TPB	TELEVISION PULLBOX		
LSSA	SAND	BA	BACKFLOW ASSEMBLY	SL	STADIUM LIGHT POLE	TPB	TELEVISION PULLBOX		
LSSP	SLOPE PROTECTION	BK	BASKETBALL GOAL	SD	STORM DRAIN MANHOLE	TPB	TELEVISION PULLBOX		
LSST	GOLF COURSE SAND TRAP	BOV	BLOW-OFF VALVE	SG	SIGN	TPB	TELEVISION PULLBOX		
LSTF	TURF	BM	BM=BENCHMARK; OR SBM=SITE BENCHMARK	SLPB	SIGNAL LIGHT PUSH BUTTON	TPB	TELEVISION PULLBOX		







**NOTE:**

THIS TOPOGRAPHIC SURVEY LOCATES SPECIFIC PHYSICAL FEATURES OF THE SITE AND THEIR ELEVATION AS DETERMINED NECESSARY BY THE PROJECT ENGINEER. IT IS NOT A COMPLETE TOPOGRAPHIC SURVEY OF THE SITE. THE INFORMATION SHOWN REFLECTS THE DATA OBTAINED BY FIELD SURVEY CONDUCTED ON JANUARY 27, 2023.

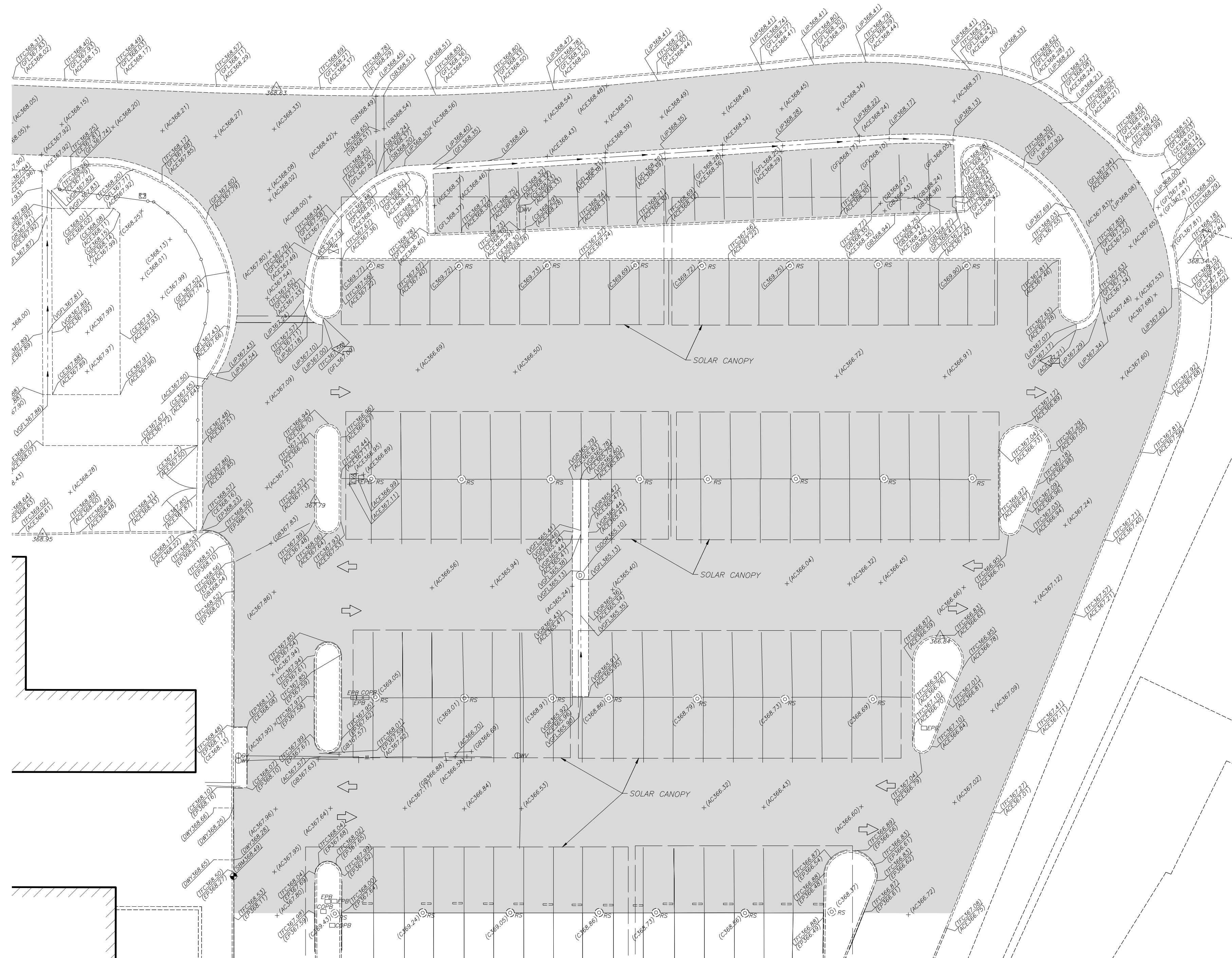
**SITE BENCHMARK:**

CHISELED CROSS ON MOWSTRIP, WEST SIDE OF PARKING LOT, APPROXIMATELY 36 FEET EAST OF BUILDING 'J'.

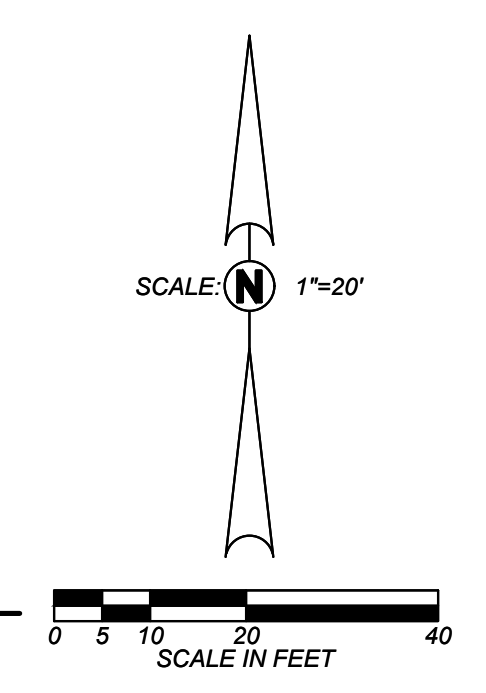
ELEV. = 368.49' NAV88 DATUM

**UTILITY NOTE:**

UTILITY INFORMATION SHOWN HEREON IS BASED ON RECORD INFORMATION SUPPLIED TO THE ENGINEER BY UTILITY COMPANIES, PUBLIC AGENCIES AND THE PROPERTY OWNER, TOGETHER WITH OBSERVATION OF VISIBLE EVIDENCE BY A FIELD SURVEY. THE ENGINEER CAN MAKE NO GUARANTEE AS TO THE ACCURACY OR COMPLETENESS OF THE UNDERGROUND UTILITY FACILITIES SHOWN. PRIOR TO ANY SITE EXCAVATIONS, THE CONTRACTOR SHALL CONTACT THE OWNER AND UNDERGROUND SERVICE ALERT (USA) AND REQUEST THAT THEY IDENTIFY THE LOCATION OF ALL UNDERGROUND UTILITIES AT THE SITE.



**A** PARKING LOT ENLARGED TOPOGRAPHIC PLAN  
 CW.C12



**Blair, Church & Flynn**  
 CONSULTING ENGINEERS  
 451 Clovis Avenue,  
 Suite 200  
 Clovis, California 93612  
 Tel (559) 326-1400  
 Fax (559) 326-1500

REGISTERED PROFESSIONAL ENGINEER  
 CIVIL  
 STATE OF CALIFORNIA  
 3/14/23  
 Date Signed

CONSULTANT	REF. & REV.	CLOVIS UNIFIED SCHOOL DISTRICT	CONST. DOCUMENTS
Blair, Church & Flynn Consulting Engineers 451 Clovis Avenue, Suite 200 Clovis, California 93612 Tel (559) 326-1400 Fax (559) 326-1500			
			<b>CW.C12</b>



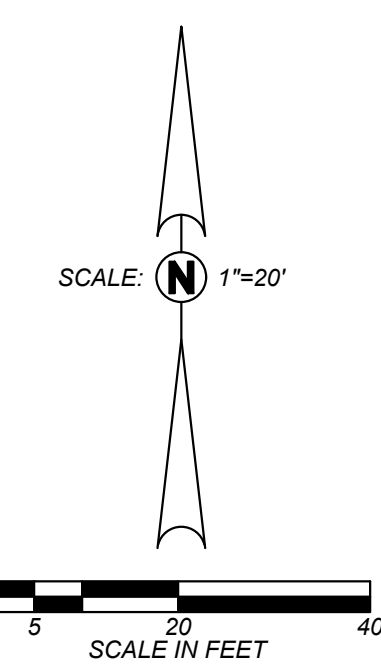




**DEMOLITION LEGEND:**

- APPROXIMATE LIMIT OF DEMOLITION. THE REMOVAL OF IMPROVEMENTS MUST BE COORDINATED WITH ALL PLAN SHEETS. CONTRACTOR MUST ALSO COORDINATE REMOVAL OF IMPROVEMENTS WITH UTILITY AGENCIES. PROTECT ALL IMPROVEMENTS NOT DESIGNATED FOR REMOVAL. SEE DEMOLITION NOTES ON COVER SHEET
- LIMITS OF ASPHALTIC-CONCRETE IMPROVEMENT REMOVAL
  - LIMITS OF CONCRETE IMPROVEMENT REMOVAL
  - PROTECT EXISTING ASPHALTIC-CONCRETE PAVING TO REMAIN
  - PROTECT EXISTING CONCRETE IMPROVEMENTS TO REMAIN
  - PROTECT FENCE TO REMAIN
  - PROTECT GATE TO REMAIN
  - PROTECT UTILITY TO REMAIN
  - REMOVE ASPHALT CONCRETE STRUCTURAL SECTION.
  - REMOVE CONCRETE
  - REMOVE SPEED BUMP
  - REMOVE AND SALVAGE EXISTING WHEELSTOPS FOR REINSTALLATION
  - SAWCUT

**GENERAL DEMOLITION NOTES:**  
 SEE COVER SHEET



**A** PARKING LOT ENLARGED DEMOLITION PLAN  
 CW.C21

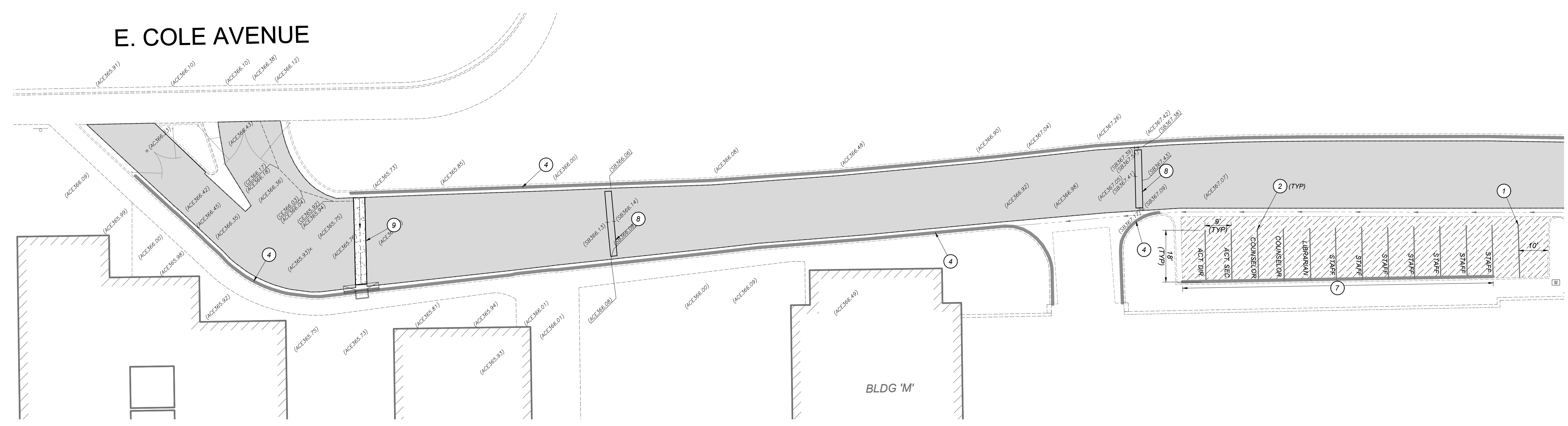
 Blair, Church & Flynn Consulting Engineers 485 Clovis Avenue, Suite 200 Clovis, California 93612 Tel (559) 326-1400 Fax (559) 326-1500		CONSULTANT	REF. & REV.	CLOVIS UNIFIED SCHOOL DISTRICT	
		2023 PAVEMENT REHABILITATION VARIOUS SITES CLOVIS WEST HIGH SCHOOL DEMOLITION PLAN		CONST. DOCUMENTS	CW.C21



IDENTIFICATION STAMP  
 DIV. OF THE STATE ARCHITECT  
 APP: 02-121173 INC:  
 REVIEWED FOR  
 SS  FLS  ACS   
 DATE: 03/16/2023

FOR DSA USE ONLY  
 DSA APP# 02-121173

E. COLE AVENUE



A ACCESS ROAD ENLARGED SITE PLAN  
 CW.C30

SEE [B/CW.C30] FOR CONTINUATION

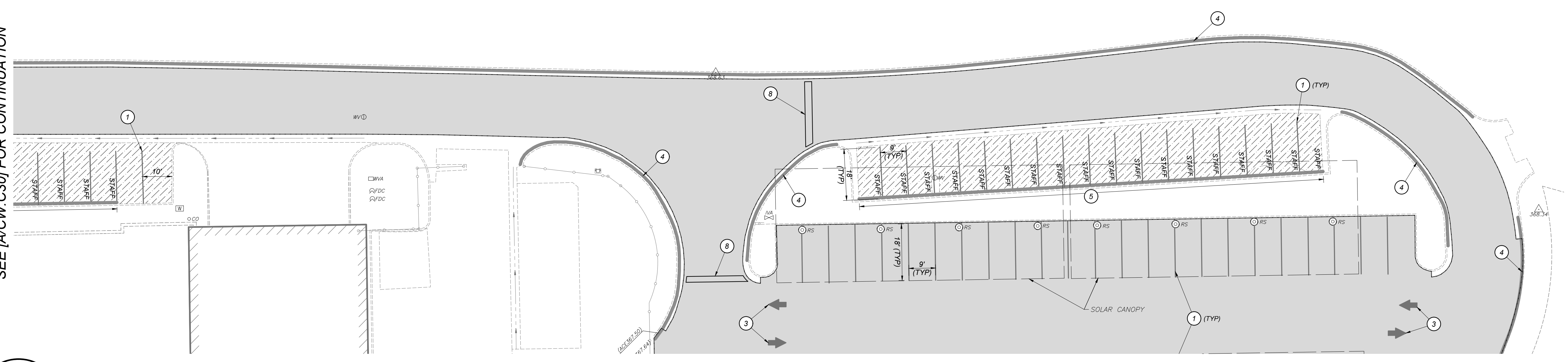
TYPICAL CONSTRUCTION LEGEND:

- DETAIL DESIGNATION
- DETAIL REFERENCE
- SHEET LOCATION
- [A/CW-X-1] [DETAIL DESIGNATION / SHEET LOCATION]
- LIMITS OF ASPHALTIC CONCRETE PAVEMENT REMOVAL AND REPLACEMENT. ASPHALTIC CONCRETE AND AGGREGATE BASE THICKNESSES TO MATCH EXISTING. SEE [A/CW.X10]
- CRACKFILL PER [C/CW.X10] AND APPLY SEAL COAT PER THE PROJECT SPECIFICATIONS
- LIMITS OF PAINTED CURB

TYPICAL CONSTRUCTION KEYNOTES:

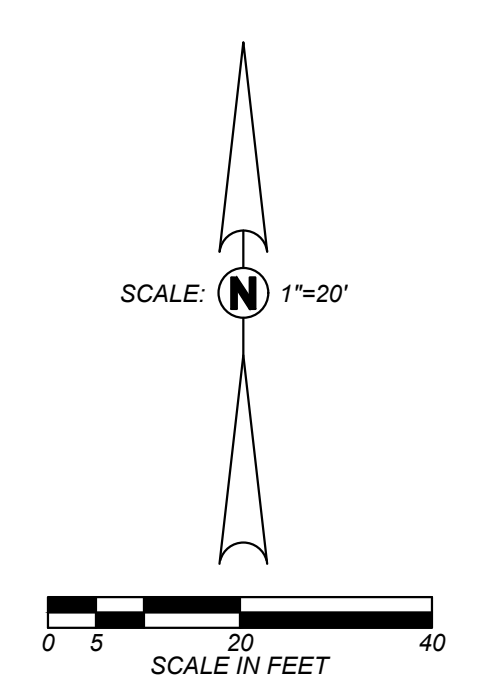
- 1 PAINT 4" WIDE WHITE STRIPE
- 2 PAINT 4" WIDE ORANGE STRIPE
- 3 PAINT DIRECTION ARROW WHITE PER [A/CW.X20]
- 4 PAINT TOP AND FACE OF CURB RED WITH 4" HIGH WHITE LETTERING, "NO PARKING - FIRE LANE" AT 30' MAX. ON CENTER
- 5 PAINT 18" LONG ORANGE STRIPE ON THE FACE OF CURB WITH 4" HIGH WHITE LETTERING, "STAFF" CENTERED ON THE STALL
- 6 PAINT TOP AND FACE OF CURB WHITE WITH 4" HIGH BLACK LETTERING, "PASSENGER LOADING ONLY" AT 30' MAX ON CENTER
- 7 PAINT TOP AND FACE OF CURB ORANGE WITH 4" HIGH WHITE LETTERING, AS NOTED ON SITE PLAN
- 8 SPEED BUMP PER [B/CW.X20]
- 9 CONCRETE VALLEY GUTTER PER [E/CW.X20]
- 10 REINSTALL SALVAGED WHEELSTOPS PER [D/CW.X20]

SEE [A/CW.C30] FOR CONTINUATION



B ACCESS ROAD ENLARGED SITE PLAN  
 CW.C30

SEE [A/CW.C31] FOR CONTINUATION



**Blair, Church & Flynn**  
 CONSULTING ENGINEERS  
 451 Clovis Avenue, Suite 200  
 Clovis, California 93612  
 Tel (559) 326-1400  
 Fax (559) 326-1500

3/14/23  
 Date Signed

CONSULTANT	REF. & REV.
Blair, Church & Flynn Consulting Engineers 451 Clovis Avenue, Suite 200 Clovis, California 93612 Tel (559) 326-1400 Fax (559) 326-1500	

CLOVIS UNIFIED SCHOOL DISTRICT	
2023 PAVEMENT REHABILITATION VARIOUS SITES CLOVIS WEST HIGH SCHOOL SITE PLAN	

CONST. DOCUMENTS	
DR. BY: AH	CW.C30
CH. BY: JF	
DATE: 01/21/2023 SCALE AS NOTED	

C:\Users\jflynn\OneDrive\Documents\2023\03\03-16-23\Clovis West High School Site Plan.dwg  
 Plot by JFlynn, Mar 15, 2023 5:46pm



**TYPICAL CONSTRUCTION LEGEND:**

- DETAIL DESIGNATION  
DETAIL REFERENCE  
SHEET LOCATION
- [A/CW.X-1] [DETAIL DESIGNATION / SHEET LOCATION]
- LIMITS OF ASPHALTIC CONCRETE PAVEMENT REMOVAL AND REPLACEMENT, ASPHALTIC CONCRETE AND AGGREGATE BASE THICKNESSES TO MATCH EXISTING. SEE [A/CW.X10]
- CRACKFILL PER [C/CW.X10] AND APPLY SEAL COAT PER THE PROJECT SPECIFICATIONS
- LIMITS OF PAINTED CURB

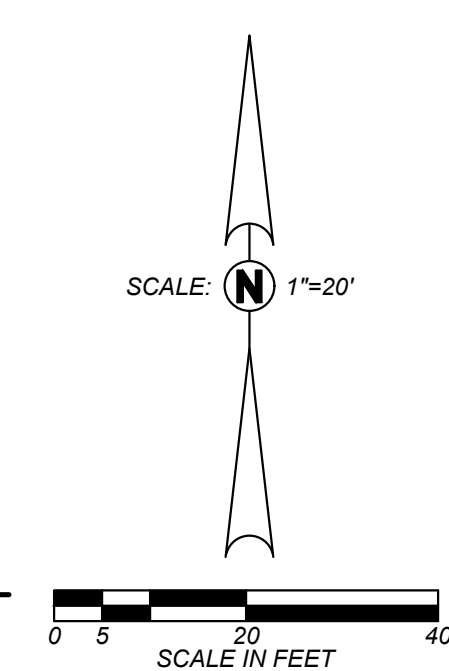
**TYPICAL CONSTRUCTION KEYNOTES:**

- 1 PAINT 4" WIDE WHITE STRIPE
- 2 PAINT 4" WIDE ORANGE STRIPE
- 3 PAINT DIRECTION ARROW WHITE PER [A/CW.X20]
- 4 PAINT TOP AND FACE OF CURB RED WITH 4" HIGH WHITE LETTERING, "NO PARKING - FIRE LANE" AT 30' MAX. ON CENTER
- 5 PAINT 18" LONG ORANGE STRIPE ON THE FACE OF CURB WITH 4" HIGH WHITE LETTERING, "STAFF" CENTERED ON THE STALL
- 6 PAINT TOP AND FACE OF CURB WHITE WITH 4" HIGH BLACK LETTERING, "PASSENGER LOADING ONLY" AT 30' MAX ON CENTER
- 7 PAINT TOP AND FACE OF CURB ORANGE WITH 4" HIGH WHITE LETTERING, AS NOTED ON SITE PLAN
- 8 SPEED BUMP PER [B/CW.X20]
- 9 CONCRETE VALLEY GUTTER PER [E/CW.X20]
- 10 REINSTALL SALVAGED WHEELSTOPS PER [D/CW.X20]

SEE [B/CW.C30] FOR CONTINUATION



**A**  
**CW.C31**  
 PARKING LOT ENLARGED SITE PLAN



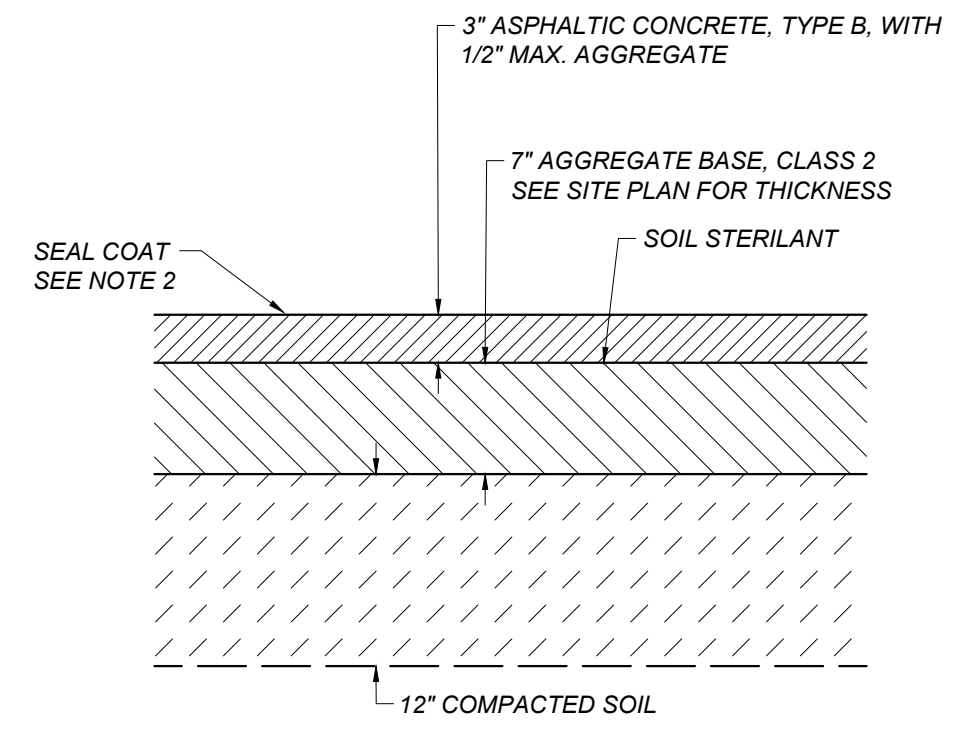
**Blair, Church & Flynn**  
 CONSULTING ENGINEERS  
 451 Clovis Avenue, Suite 200  
 Clovis, California 93612  
 Tel (559) 326-1400  
 Fax (559) 326-1500

REGISTERED PROFESSIONAL ENGINEER  
 STATE OF CALIFORNIA  
 CIVIL  
 No. 67218  
 3/14/23  
 Date Signed

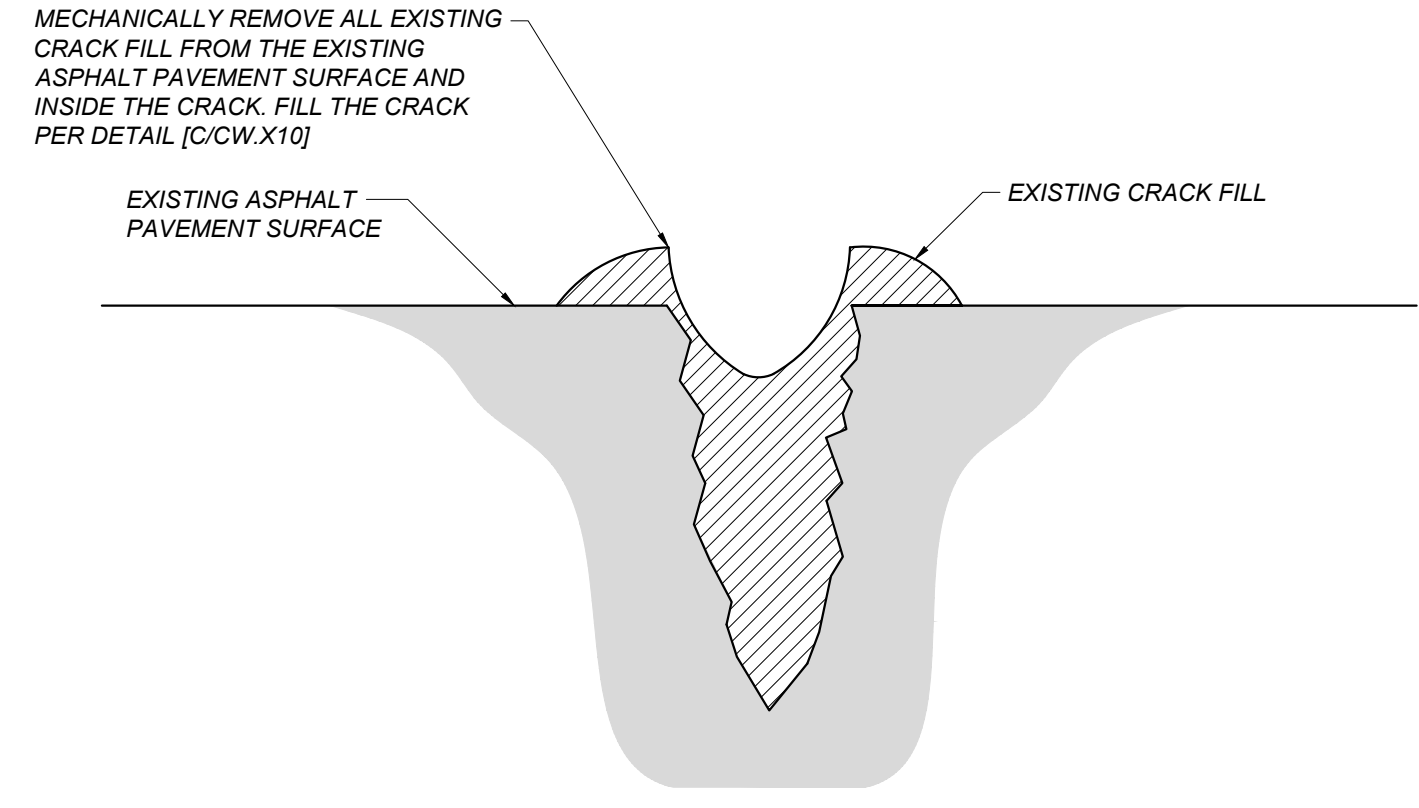
CONSULTANT	REF. & REV.	CLOVIS UNIFIED SCHOOL DISTRICT	
Blair, Church & Flynn Consulting Engineers 451 Clovis Avenue, Suite 200 Clovis, California 93612 Tel (559) 326-1400 Fax (559) 326-1500		2023 PAVEMENT REHABILITATION VARIOUS SITES CLOVIS WEST HIGH SCHOOL SITE PLAN	CONST. DOCUMENTS
			DR. BY: AH CH. BY: JF DATE: 01/21/2023 SCALE AS NOTED
			<b>CW.C31</b>



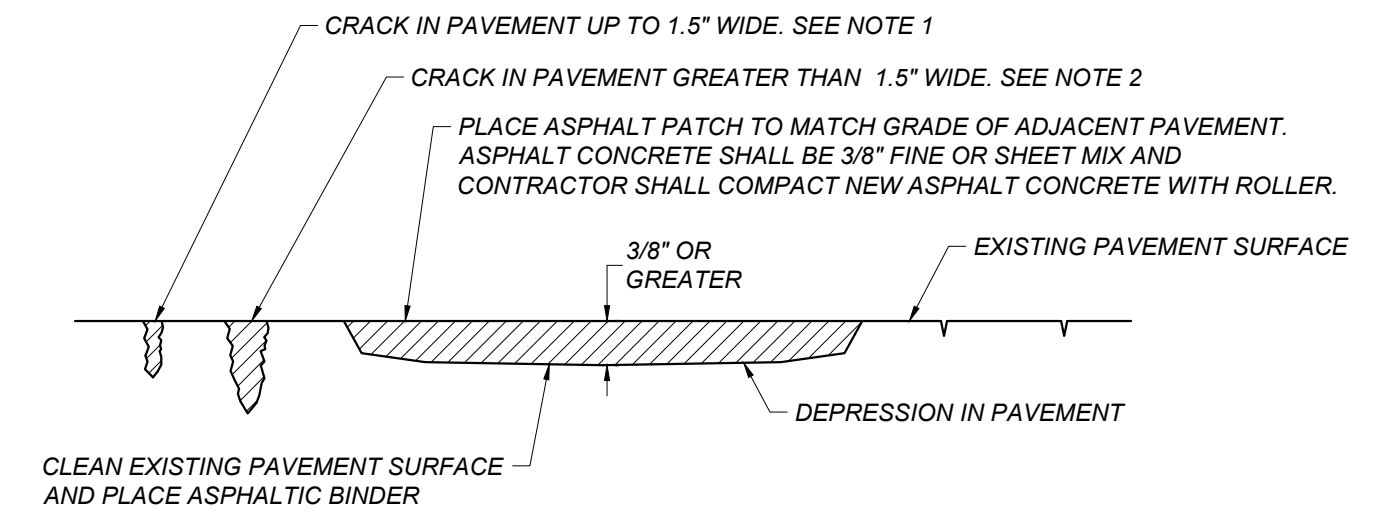
- NOTES:**
- CONTRACTOR MAY SUBSTITUTE THE SECTION SHOWN IN DETAIL [D/CW.X10] FOR SMALL AREAS OF PAVEMENT REPLACEMENT
  - SEAL COAT IS ONLY APPLIED TO NEW PAVEMENT WHEN IT IS ADJACENT TO EXISTING PAVEMENT THAT IS RECEIVING A SEAL COAT



**A** ASPHALT CONCRETE PAVEMENT SECTION  
 CW.X10 NOT TO SCALE

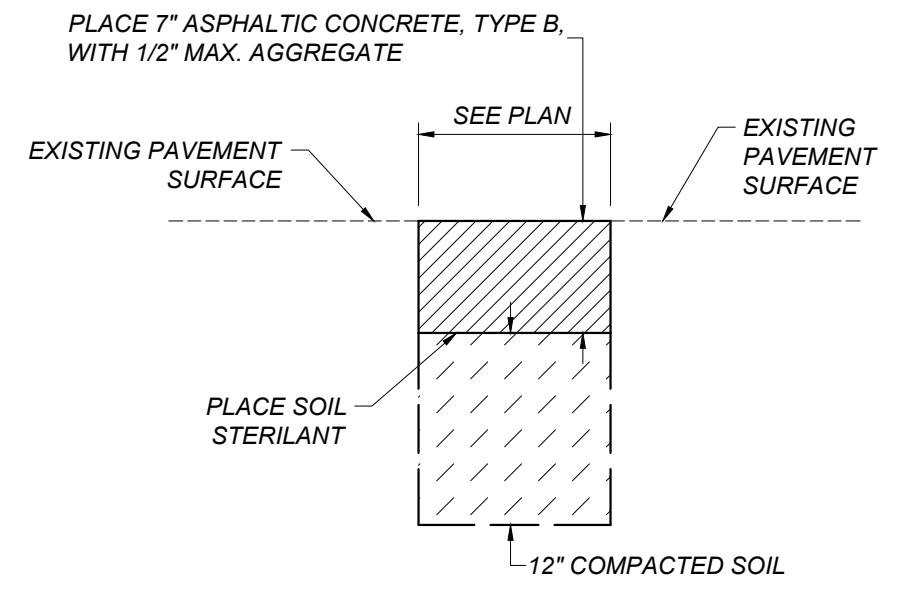


**B** CRACK FILL CLEANING DETAIL  
 CW.X10 NOT TO SCALE

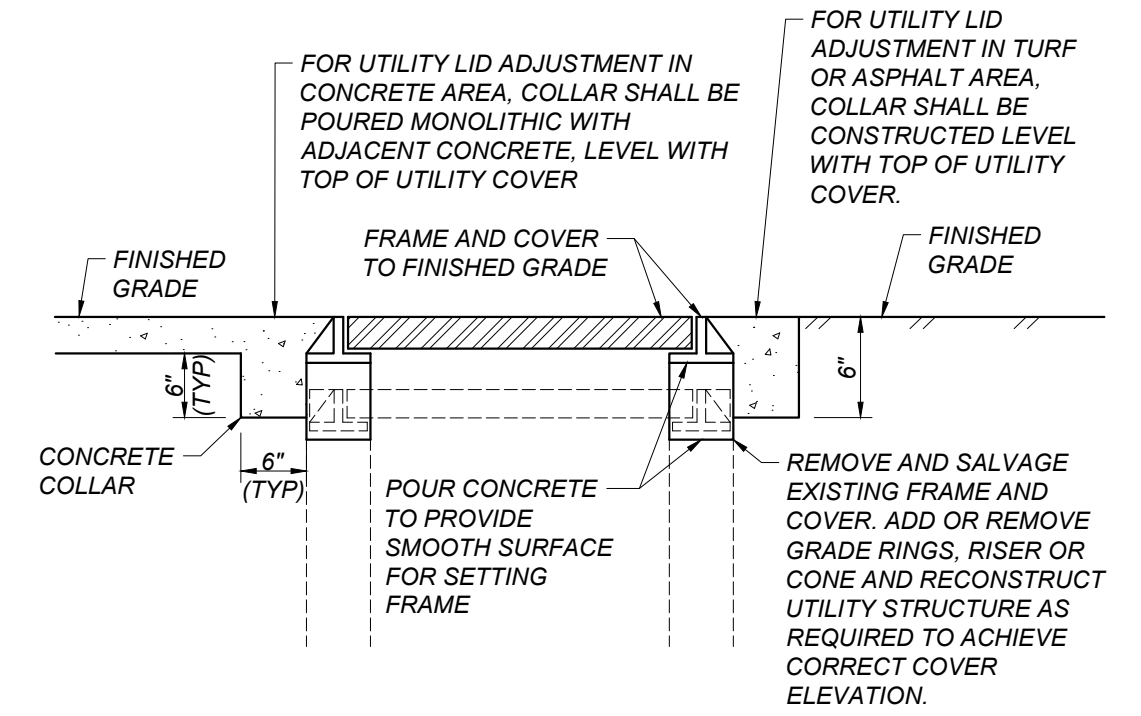


- NOTES:**
- FOR CRACKS UP TO 1.5" IN WIDTH, MECHANICALLY CLEAN OUT EXISTING CRACK. IF CRACK DEPTH EXCEEDS 3/4" FILL WITH SAND UP TO 3/4" BELOW THE ASPHALT SURFACE AND FILL WITH HOT POUR CRACK FILL IN ACCORDANCE WITH THE PROJECT SPECIFICATIONS AND THE MANUFACTURER'S RECOMANDATIOS. CRACKFILL SHALL BE APPLIED UNTIL IT SETTLES FLUSH WITH ADJACENT PAVEMENT SURFACES.
  - FOR CRACKS GREATER THAN 1.5" IN WIDTH, MECHANICALLY CLEAN CRACK TO A MINIMUM DEPTH OF 2". FILL THE CRACK AN ASPHALT FINES MIX AND COMPACT IT UNTIL IT IS FLUSH WITH THE EXISTING ASPHALT SURFACE PRIOR TO SEAL COAT APPLICATION.
  - FOR CRACKS WITH EXISTING CRACK FILL, CLEAN CRACK PER DETAIL [B/CW.X10]

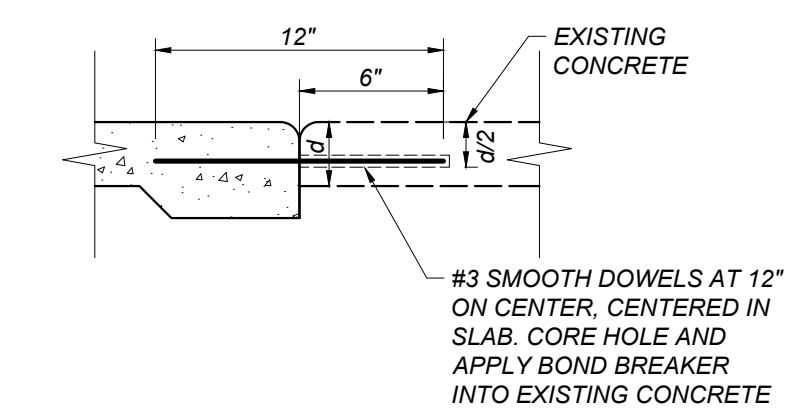
**C** CRACK PATCHING DETAIL  
 CW.X10 NOT TO SCALE



**D** ASPHALT CONCRETE PLUG  
 CW.X10 NOT TO SCALE

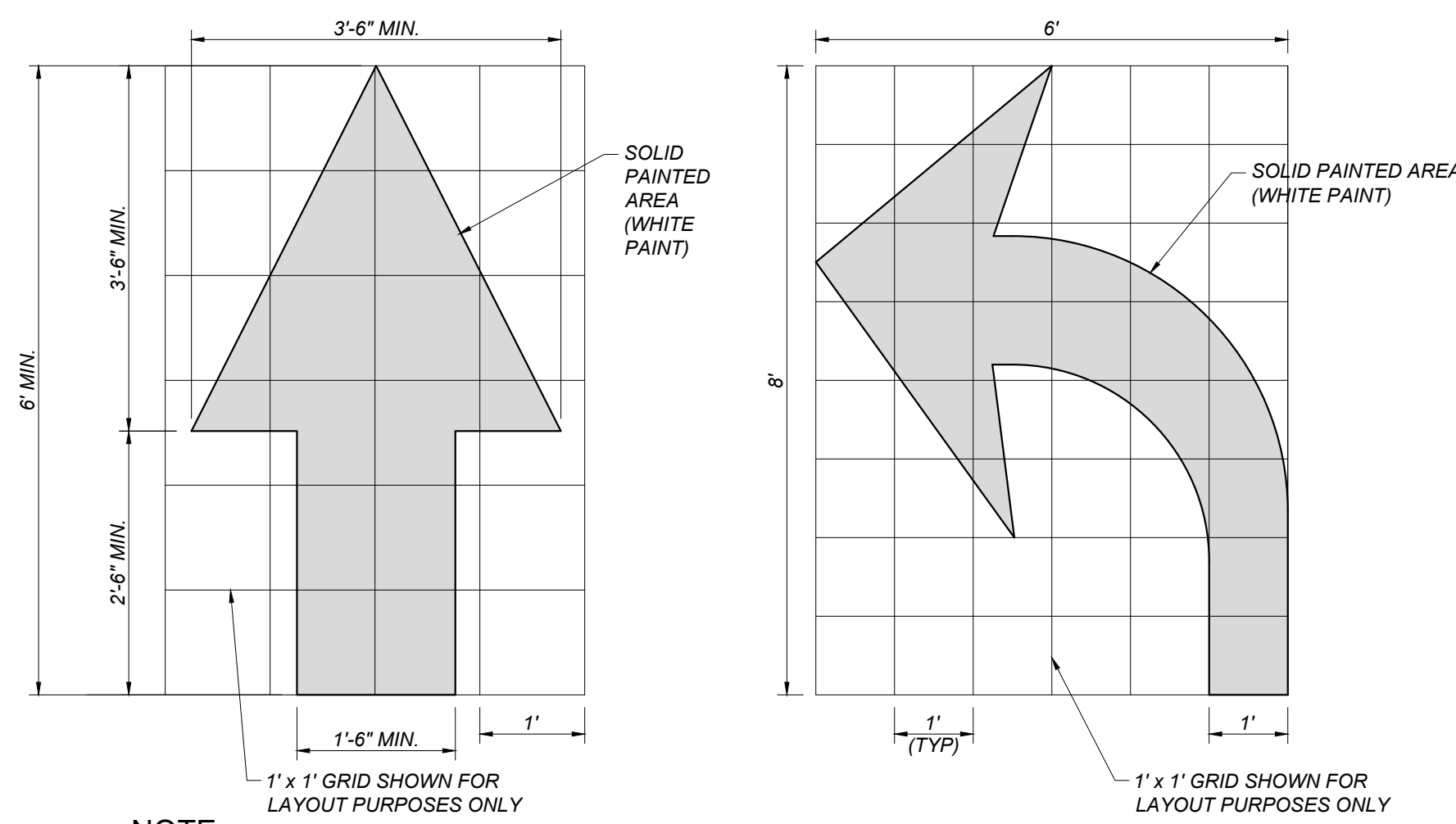


**E** ADJUST UTILITY LID  
 CW.X10 NOT TO SCALE



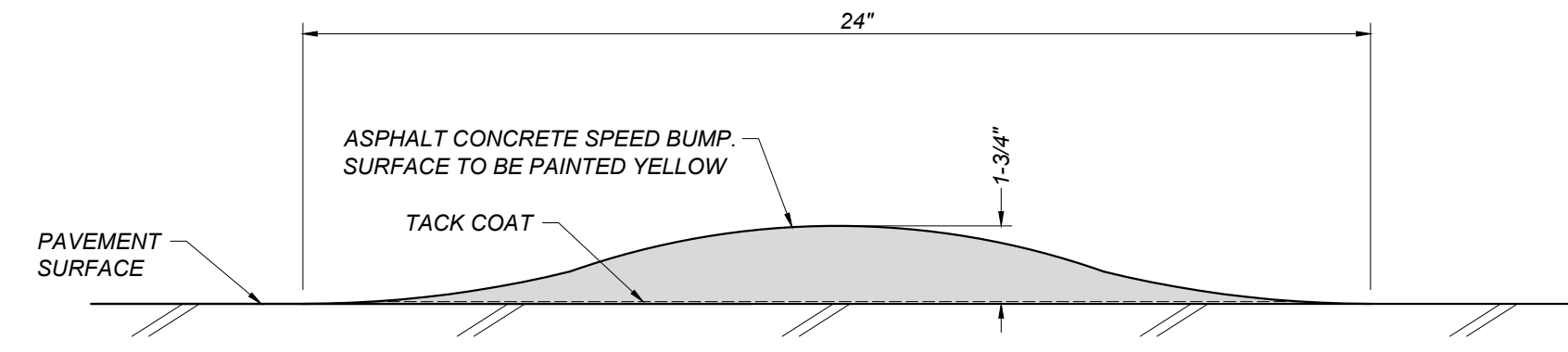
**F** DOWEL BAR DETAIL  
 CW.X10 NOT TO SCALE



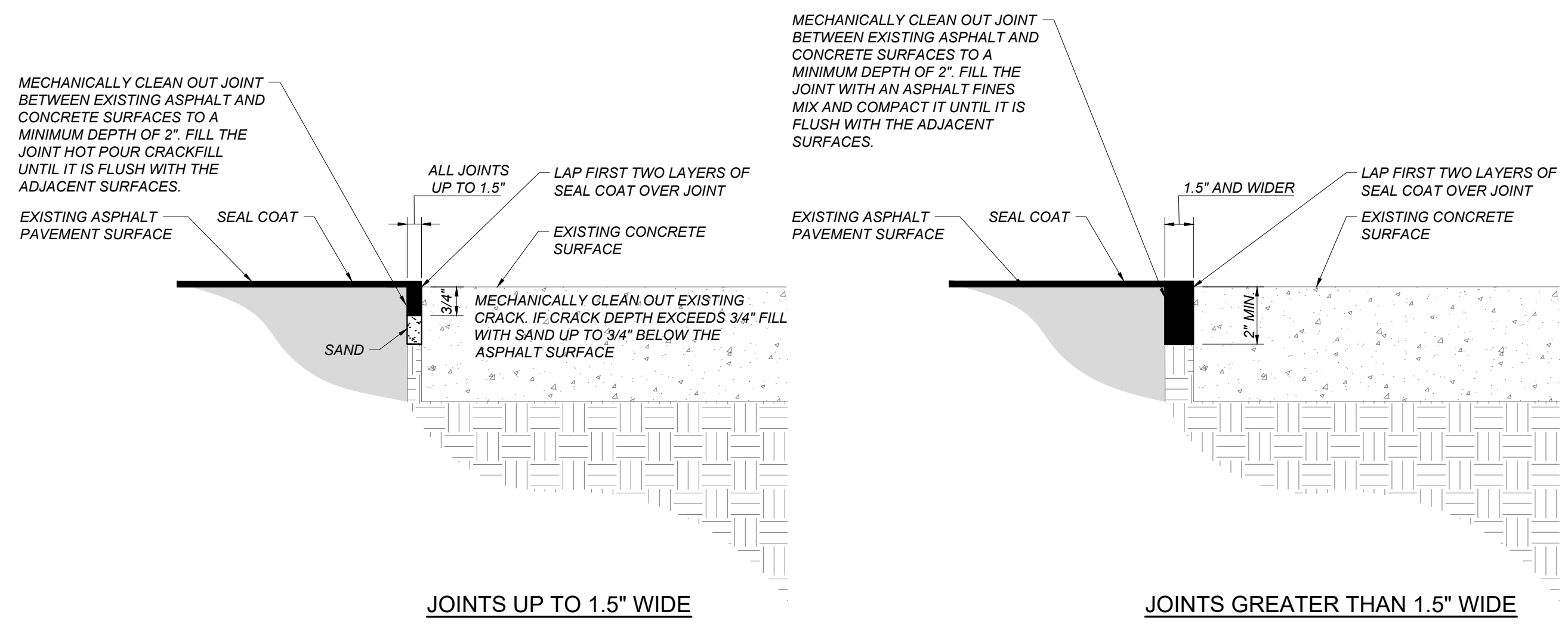


NOTE:  
 CALTRANS TYPE IV(L) SHOWN.  
 USE MIRROR IMAGE FOR RIGHT TURN.

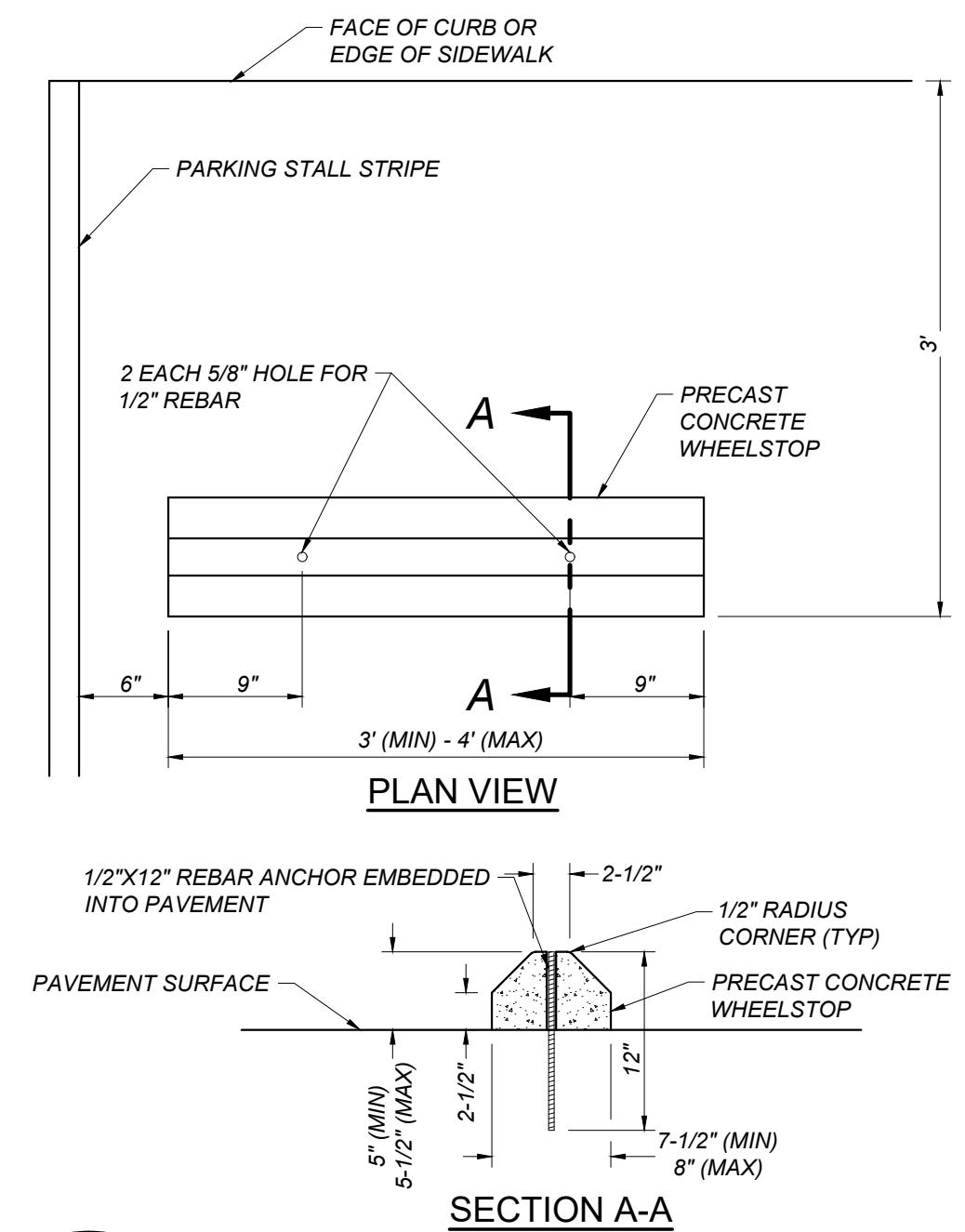
**A** DIRECTIONAL ARROWS  
 CW.X20 NOT TO SCALE



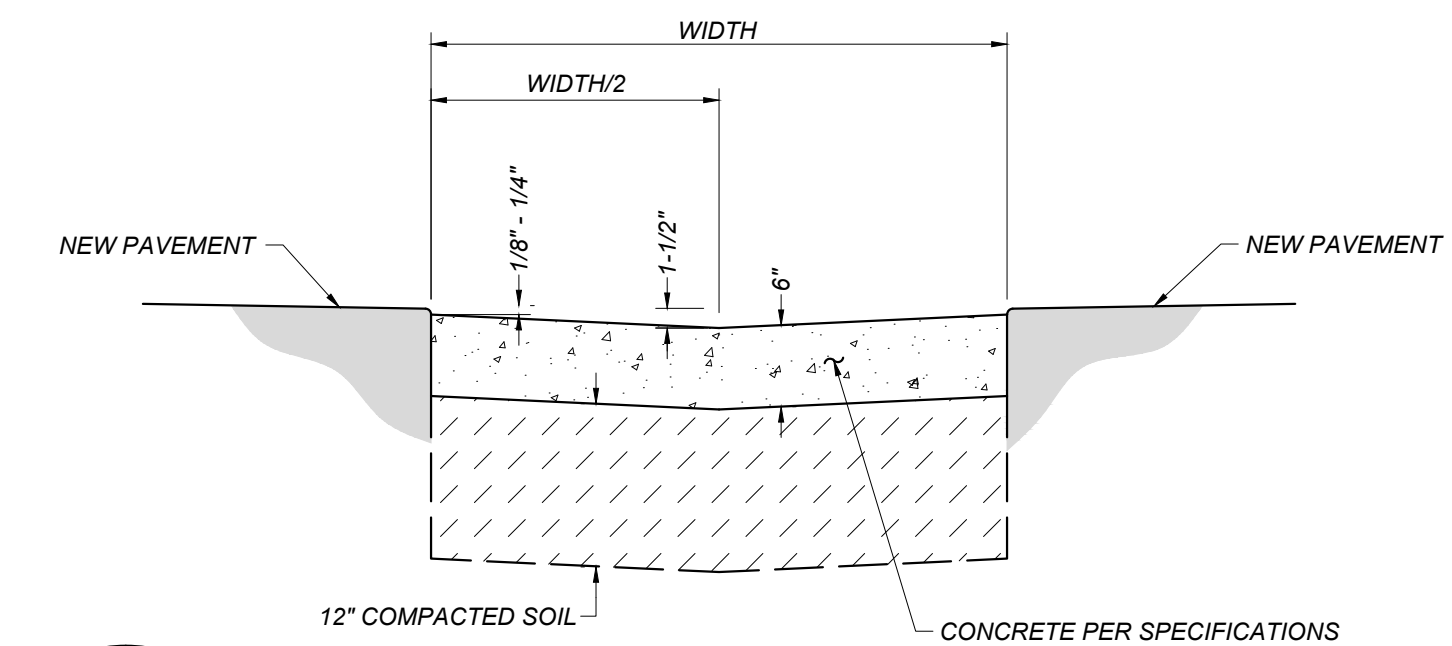
**B** SPEED BUMP  
 CW.X20 NOT TO SCALE



**C** ASPHALT EDGE CONDITION TREATMENT  
 CW.X20 NOT TO SCALE



**D** DETAIL OF TYPICAL WHEELSTOP  
 CW.X20 NOT TO SCALE



**E** CONCRETE VALLEY GUTTER  
 CW.X20 NOT TO SCALE