

CLOVIS UNIFIED SCHOOL DISTRICT

EIMEAR O'BRIEN, ED. D., DISTRICT SUPERINTENDENT

2023 PARKING LOT REHABILITATION IMPROVEMENTS AT GRANITE RIDGE INTERMEDIATE

IDENTIFICATION STAMP
DIV. OF THE STATE ARCHITECT
APP: 02-121175 INC:
REVIEWED FOR
SS FLS ACS
DATE: 03/16/2023

FOR DSA USE ONLY
DSA APP# 02-121175

GENERAL SITE NOTES:

THE REQUIREMENTS AND INFORMATION SET OUT BELOW ARE PROVIDED FOR THE CONTRACTOR'S CONVENIENCE AND DO NOT ENCOMPASS ALL PROJECT REQUIREMENTS DESCRIBED BY THE PROJECT PLANS AND SPECIFICATIONS AND/OR APPLICABLE LAWS, REGULATIONS AND/OR BUILDING CODES.

- CONSTRUCTION OF ALL PROJECT SITE IMPROVEMENTS SUBJECT TO ADA ACCESS COMPLIANCE, INCLUDING ACCESSIBLE PATH OF TRAVEL, CURB RETURNS, PARKING STALL(S) AND UNLOADING AREAS, BARRIER FREE AMENITIES AND/OR OTHER APPLICABLE SITE IMPROVEMENTS SHALL CONFORM TO THE AMERICANS WITH DISABILITIES ACT, CALIFORNIA TITLE 24, AND THE CALIFORNIA BUILDING CODE, CURRENT EDITION(S).
- CONTRACTOR SHALL FIELD VERIFY ALL GRADES AND SLOPES PRIOR TO THE PLACEMENT OF CONCRETE AND/OR PAVEMENT FOR CONFORMANCE WITH ADA ACCESS COMPLIANCE REQUIREMENTS. EXAMPLES OF MINIMUM AND MAXIMUM LIMITS RELATED TO ADA ACCESS COMPLIANCE INCLUDE, BUT ARE NOT LIMITED TO:
 - ACCESSIBLE PATH OF TRAVEL CROSS-SLOPE SHALL NOT EXCEED 2%
 - ACCESSIBLE PATH OF TRAVEL LONGITUDINAL SLOPES SHALL NOT EXCEED 5%
 - RAMP LONGITUDINAL SLOPES SHALL NOT EXCEED 8.33%
 - WALKS SHALL NOT HAVE LESS THAN 48 INCHES IN UNOBSTRUCTED WIDTH
 - ACCESSIBLE PARKING SPACES AND ACCESS AISLES SHALL NOT EXCEED 2% SLOPE IN ANY DIRECTION
 - LANDINGS AT THE TOP AND BOTTOM OF ACCESSIBLE RAMPS SHALL NOT EXCEED 2% SLOPE IN ANY DIRECTION
 - GUTTERS AND ROAD SURFACES DIRECTLY ADJACENT TO AND WITHIN 2 FEET OF A CURB RAMP SHALL HAVE A COUNTER SLOPE NOT TO EXCEED 5%
- CONTRACTOR MUST IMMEDIATELY NOTIFY THE ENGINEER OF RECORD, IDENTIFIED BY THE PROFESSIONAL ENGINEERING SEAL AND SIGNATURE ON THESE PLANS, OF ANY SITE CONDITION(S) AND/OR DESIGN INFORMATION THAT PREVENTS THE CONTRACTOR FROM COMPLYING WITH THE LAWS, REGULATIONS AND/OR BUILDING CODES GOVERNING ADA ACCESS COMPLIANCE.
- DRAINAGE SHALL NOT BE ALLOWED ONTO ADJACENT PROPERTY.
- ALL FILL MATERIAL USED SHALL BE PLACED IN COMPLIANCE WITH THE PROJECT SPECIFICATIONS. A SOILS COMPACTION REPORT SHALL BE SUBMITTED TO THE ENGINEER OF RECORD AS REQUIRED BY THE PROJECT SPECIFICATIONS.
- THE CONTRACTOR SHALL IMPLEMENT DUST CONTROL MEASURES AS REQUIRED BY THE PROJECT SPECIFICATIONS, AND BY GOVERNING PUBLIC AGENCIES.
- THE CONTRACTOR SHALL LOCATE ALL EXISTING UTILITIES PRIOR TO START OF ANY WORK.
- CONTRACTOR SHALL NOTIFY THE SCHOOL DISTRICT TO TURN OFF IRRIGATION A MINIMUM OF 2 DAYS PRIOR TO STARTING WORK. CONTRACTOR SHALL COORDINATE WITH THE SCHOOL DISTRICT THROUGHOUT THE COURSE OF THE PROJECT FOR WATERING AND NON-WATERING TIMES. CONTRACTOR SHALL NOTIFY THE DISTRICT AS SOON AS WORK IS COMPLETED TO THE POINT WHERE IRRIGATION SYSTEMS MAY BE TURNED BACK ON.
- ENSURE THAT ALL EXISTING STRIPING IS NOT VISIBLE AFTER APPLYING SEAL COAT AND PRIOR TO RESTRIPIING AND REPAINTING. OTHERWISE, ADDITIONAL SEAL COAT APPLICATION MAY BE REQUIRED.
- PRIOR TO ACCEPTANCE OF NEW PAVING AND APPLICATION OF SEAL COAT AND/OR STRIPING, THE CONTRACTOR SHALL COMPLETE A WATER TEST OF THE NEW PAVEMENT WITH THE ENGINEER OF RECORD PRESENT TO VERIFY THAT NO LOW SPOTS OR "BIRD BATHS" ARE PRESENT, PER THE PROJECT SPECIFICATIONS.
- LAYOUT ALL PAVEMENT MARKINGS TO MATCH EXISTING UNLESS NOTED OTHERWISE ON PLANS.
- PAINT ALL CURBS AND WHEELSTOPS TO MATCH EXISTING WITHIN PROJECT LIMITS, UNLESS SHOWN OTHERWISE ON THE PLANS
- ALL CONCRETE SHALL HAVE WEAKENED PLANE JOINTS AT 10 FEET OR LESS ON CENTER AND ONE HALF INCH PREMOULDED EXPANSION JOINTS AT 30 FEET OR LESS MINIMUM. MATCH EXISTING SCORE PATTERN DIMENSIONS ON ALL CONCRETE WALKS AND PAVEMENT.
- NO CONCRETE MAY BE POURED UNTIL ALL FORMS AND REINFORCEMENTS HAVE BEEN REVIEWED AND APPROVED BY THE PROJECT INSPECTOR.
- REPLACE ALL DAMAGED TURF AND IRRIGATION FACILITIES RESULTING FROM THE WORK REQUIRED.
- ADJUST ALL UTILITY LIDS TO FINISHED GRADE WITHIN CONSTRUCTION AREA PER DETAIL [B/GR.X10] UNLESS NOTED OTHERWISE. REMOVE AND REPLACE ALL BROKEN OR DAMAGED LIDS AND BOXES. ALL LIDS WITHIN TRAFFIC AREAS SHALL BE TRAFFIC RATED.
- ANY EXISTING UTILITIES AND/OR IMPROVEMENTS WHICH ARE TO REMAIN, THAT BECOME DAMAGED DURING CONSTRUCTION SHALL BE COMPLETELY RESTORED TO THE SATISFACTION OF THE OWNER AND AGENCY HAVING AUTHORITY, AT THE CONTRACTOR'S SOLE EXPENSE.
- ANY EXISTING UTILITIES AND/OR IMPROVEMENTS THAT BECOME DAMAGED DURING CONSTRUCTION SHALL BE COMPLETELY RESTORED TO THE SATISFACTION OF THE OWNER AND AGENCY HAVING AUTHORITY, AT THE CONTRACTOR'S SOLE EXPENSE.
- CONTRACTOR TO MATCH EXISTING PAVEMENT GRADE AT ALL NEW PAVEMENT LOCATIONS UNLESS NOTED OTHERWISE ON THE PLANS.
- ASPHALT CONCRETE REMOVAL AND REPLACEMENT LIMITS SHOWN ARE APPROXIMATE AND ARE BASED ON PAVEMENT CONDITIONS OBSERVED DURING A PRE-DESIGN SITE REVIEW. ADJUST LOCATIONS AND LIMITS AS REQUIRED BY ACTUAL FIELD CONDITIONS OR AS DIRECTED BY THE ENGINEER.
- INSTALL DOWELED CONNECTION AT JOINT OF NEW CONCRETE TO EXISTING CONCRETE PER DETAIL [C/GR.X10]
- TREAT ALL JOINTS BETWEEN EXISTING ASPHALT AND CONCRETE SURFACES PER DETAIL [G/GR.X10]

GENERAL NOTES:

- ALL WORK SHALL BE DONE IN ACCORDANCE WITH THESE CONSTRUCTION DRAWINGS, THE CONTRACT SPECIFICATIONS AND, WHERE APPLICABLE, THE CITY STANDARDS AND THE STATE OF CALIFORNIA STANDARD SPECIFICATIONS.
- THE CONTRACTOR SHALL COORDINATE ALL CONSTRUCTION ACTIVITIES WITH THE SCHOOL DISTRICT'S USE OF THE FACILITIES AND OTHER CONTRACTORS WHO MAY BE DOING CONSTRUCTION WITHIN THE PROJECT SITE.
- THE CONTRACTOR SHALL CONTACT DISTRICT OFFICIALS FOR DETERMINATION OF DEPTH AND LOCATION OF UNDERGROUND UTILITIES PRIOR TO EXCAVATION IN THE PROJECT SITE.
- BEFORE COMMENCING WORK, THE CONTRACTOR SHALL NOTIFY ALL UTILITY AUTHORITIES OR UTILITY COMPANIES HAVING POSSIBLE INTEREST IN THE WORK OF THE CONTRACTOR'S INTENTION TO EXCAVATE PROXIMATE TO EXISTING FACILITIES AND THE CONTRACTOR SHALL VERIFY THE LOCATION OF ANY UTILITIES IN THE WORK AREA, NOTIFY U.S.A. AT 1(800) 642-2444, TWO (2) DAYS PRIOR TO EXCAVATION.
- ALL CONSTRUCTION SHALL CONFORM TO THE REQUIREMENTS OF THE 2016 CALIFORNIA BUILDING CODE (CBC).
- CHANGE TO THE APPROVED DRAWINGS AND SPECIFICATIONS SHALL BE MADE BY ADDENDA OR CONSTRUCTION CHANGE DOCUMENT (CCD) APPROVED BY DSA, AS REQUIRED BY SECTION 4-338, PART 1, TITLE 24, CCR.
- A "DSA CERTIFIED" CLASS 3 PROJECT INSPECTOR EMPLOYED BY THE DISTRICT (OWNER) AND APPROVED BY DSA SHALL PROVIDE CONTINUOUS INSPECTION OF THE WORK. THE DUTIES OF THE INSPECTOR ARE DEFINED IN SECTION 4-342, PART 1, TITLE 24, CCR.
- A DSA ACCEPTED TESTING LABORATORY DIRECTLY EMPLOYED BY THE DISTRICT (OWNER) SHALL CONDUCT ALL THE REQUIRED TESTS AND INSPECTIONS FOR THE PROJECT.
- THE INTENT OF THESE DRAWINGS AND SPECIFICATIONS IS THAT THE WORK OF THE ALTERATION, REHABILITATION OR RECONSTRUCTION SHALL BE IN ACCORDANCE WITH TITLE 24, CCR. SHOULD ANY EXISTING CONDITIONS SUCH AS DETERIORATION OR NON-COMPLYING CONSTRUCTION BE DISCOVERED WHICH IS NOT COVERED BY THE CONTRACT DOCUMENTS WHEREIN THE FINISHED WORK WILL NOT COMPLY WITH TITLE 24, CCR, A CONSTRUCTION CHANGE DOCUMENT (CCD), OR A SEPARATE SET OF PLANS AND SPECIFICATIONS, DETAILING AND SPECIFYING THE REQUIRED WORK SHALL BE SUBMITTED TO AND APPROVED BY DSA BEFORE PROCEEDING WITH THE WORK (SECTION 4-317(C), PART 1, TITLE 24, CCR).
- GRADING PLANS, DRAINAGE IMPROVEMENTS, ROAD AND EMERGENCY ACCESS REQUIREMENTS AND ENVIRONMENTAL HEALTH CONSIDERATIONS SHALL COMPLY WITH ALL LOCAL ORDINANCES.

GENERAL DEMOLITION NOTES:

- THE "LIMIT OF DEMOLITION" SHOWN IS APPROXIMATE AND IS GENERALLY CONSIDERED TO BE THE MINIMUM REMOVAL REQUIREMENTS. CONTRACTOR MUST COORDINATE AS NOTED IN THE LEGEND.
- CONTRACTOR SHALL LEGALLY DISPOSE OF ALL DEMOLISHED MATERIALS OFF SITE.
- CONTRACTOR SHALL PROTECT ALL EXISTING UTILITY IMPROVEMENTS NOT SPECIFICALLY DESIGNATED FOR REMOVAL.
- THE ON-SITE UNDERGROUND UTILITIES SHOWN ON THIS SHEET ARE AT APPROXIMATE LOCATIONS. THE EXTENT, LOCATIONS AND SIZES ARE UNKNOWN. THE CONTRACTOR SHALL POTHOLE TO LOCATE AND VERIFY THE UNDERGROUND UTILITY LINES PRIOR TO REMOVAL.
- CONTRACTOR TO PROTECT AND PRESERVE IN PLACE ANY FOUND SURVEY MONUMENTS. ANY MONUMENTS DISTURBED SHALL BE RESET BY A CALIFORNIA LICENSED SURVEYOR AND THE APPROPRIATE PAPERWORK FILED WITH THE CITY OR COUNTY, AT CONTRACTOR'S EXPENSE.
- ALL HAZARDOUS MATERIALS ENCOUNTERED DURING SITE DEMOLITION SHALL BE REMEDIATED AND DISPOSED OF PER STATE AND EPA REQUIREMENTS.
- REMOVE EXISTING IMPROVEMENTS AS NECESSARY TO CONSTRUCT NEW IMPROVEMENTS SHOWN ON THESE PLANS.
 - FOR CONCRETE REMOVAL, REMOVE TO THE NEXT NEAREST TOOLED JOINT OR EXPANSION JOINT OF IMPROVEMENTS DESIGNATED TO REMAIN.
 - FOR ASPHALTIC PAVEMENT REMOVAL, SAWCUT TO A STRAIGHT, CLEAN EDGE AT LOCATIONS INDICATED ON THE PLANS.



INTERNATIONAL AVENUE

SITE MAP

NOT TO SCALE

SITE ADDRESS
GRANITE RIDGE INTERMEDIATE
2770 E INTERNATIONAL AVE
FRESNO, CA 93730

PROJECT CONTACTS:

OWNER: CLOVIS UNIFIED SCHOOL DISTRICT
1450 HERNDON AVE
CLOVIS, CA 93611
PHONE: (559) 327-9000

CIVIL ENGINEER: BLAIR, CHURCH & FLYNN
CONSULTING ENGINEERS
451 CLOVIS AVE., SUITE 200
CLOVIS, CA 93612
PHONE: (559) 326-1400

SCOPE OF WORK:

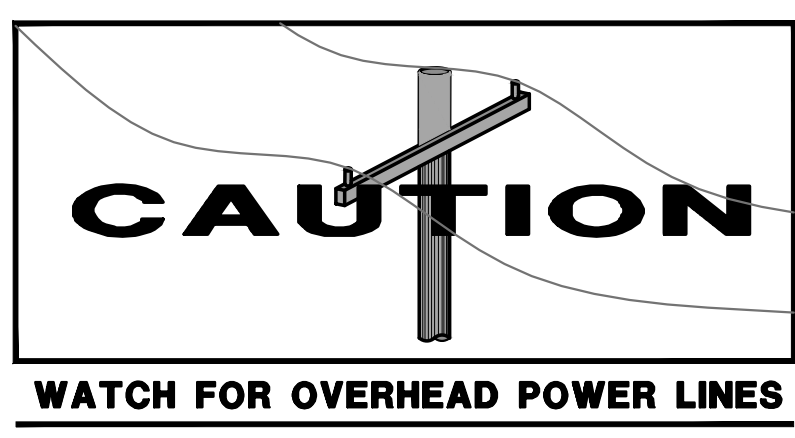
- PARTIAL ASPHALT PAVEMENT REMOVAL AND REPLACEMENT, CRACKFILL, SEALCOAT, AND RE-STRIPING EXISTING PARKING LOT.
- ACCESSIBILITY UPGRADES INCLUDING ACCESSIBLE PARKING STALLS, SIGNAGE & STRIPING.

APPLICABLE CODES:

2022 CALIFORNIA ADMIN. CODE, TITLE 24, PART 1, CCR
2022 CALIFORNIA BUILDING CODE, TITLE 24, PART 2, CCR

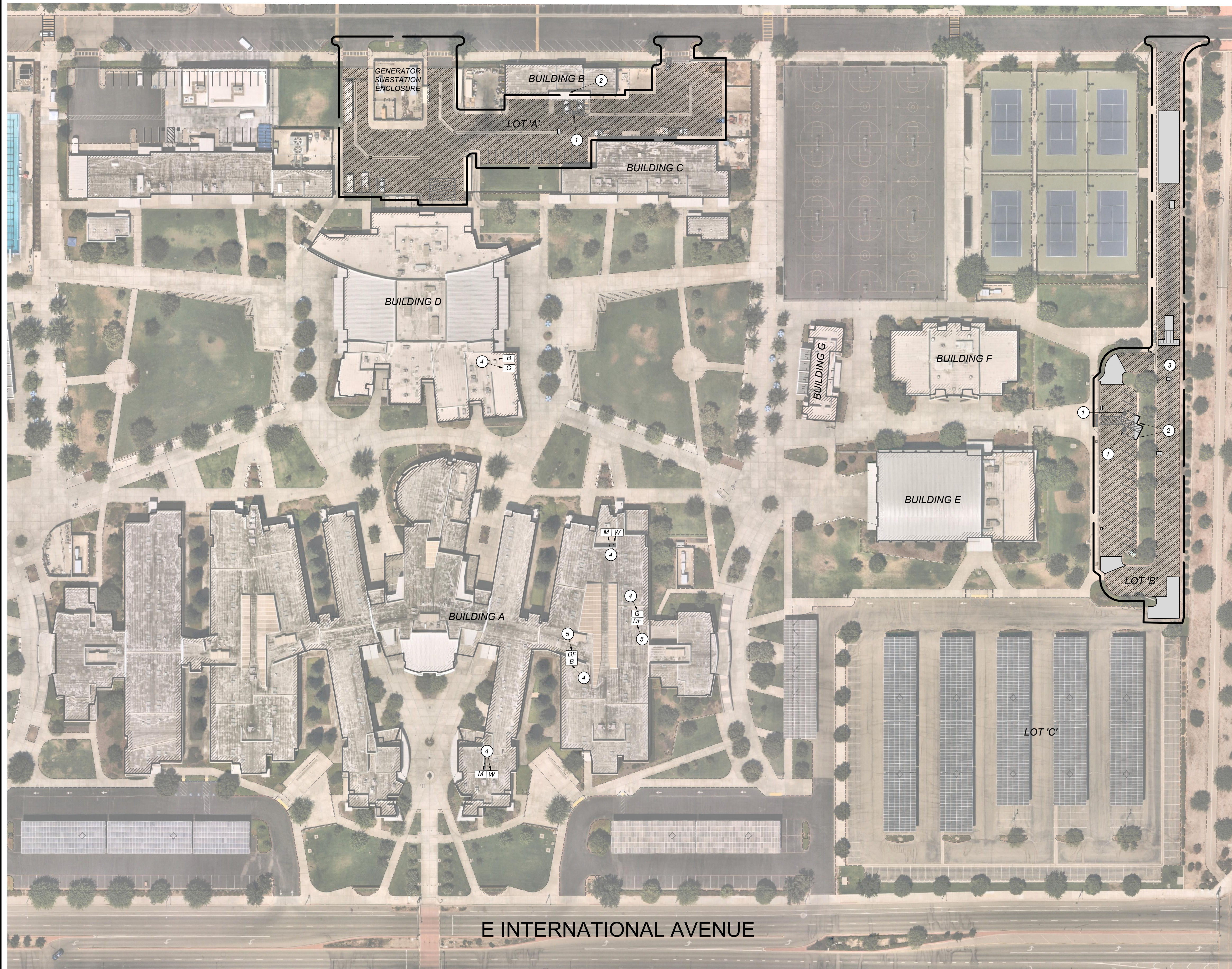
TABLE OF CONTENTS	
SHEET NUMBER	SHEET TITLE
GR.C00	COVER SHEET
GR.C01	ACCESS COMPLIANCE PLAN
GR.C20	DEMOLITION PLAN
GR.C30	SITE PLAN
GR.C31	SITE PLAN
GR.X10	DETAILS
GR.X20	DETAILS
TOTAL SHEET COUNT: 7	

CONTRACTOR AGREES THAT IN ACCORDANCE WITH GENERALLY ACCEPTED CONSTRUCTION PRACTICES CONTRACTOR ASSUMES SOLE AND COMPLETE RESPONSIBILITY FOR JOB SITE CONDITIONS DURING THE PERFORMANCE OF WORK, INCLUDING SAFETY OF ALL PERSONS AND PROPERTY, ON A CONTINUOUS BASIS NOT LIMITED TO NORMAL WORKING HOURS. CONTRACTOR FURTHER AGREES TO DEFEND, INDEMNIFY AND HOLD HARMLESS BLAIR, CHURCH & FLYNN CONSULTING ENGINEERS FROM ANY AND ALL LIABILITY, REAL OR ALLEGED, IN CONNECTION WITH THE PERFORMANCE OF WORK ON THIS PROJECT, EXCEPTING LIABILITY ARISING FROM THE SOLE NEGLIGENCE OF BLAIR, CHURCH & FLYNN CONSULTING ENGINEERS.



CONSULTANT	REF. & REV.	CLOVIS UNIFIED SCHOOL DISTRICT	
Blair, Church & Flynn Consulting Engineers 451 Clovis Avenue, Suite 200 Clovis, California 93612 Tel (559) 326-1400 Fax (559) 326-1500		2023 PAVEMENT REHABILITATION VARIOUS SITES GRANITE RIDGE INTERMEDIATE COVER SHEET	CONST. DOCUMENTS GR.C00
		DR. BY: AH	SCALE AS NOTED
		CH. BY: JH	
		DATE: 01/21/2023	

Blair, Church & Flynn Consulting Engineers, 451 Clovis Avenue, Suite 200, Clovis, CA 93612, (559) 326-1400, (559) 326-1500, www.blairchurchandflynn.com, License No. C-10000, Eimear O'Brien, Ed. D., 3/14/23, 1:00pm



BUILDING LEGEND:

ID	BUILDING USE	DSA APP #
A	ACADEMIC / MEDIA / ADMINISTRATION	02-105863
B	MAINTENANCE	02-105863
C	TECHNOLOGY LABS	02-105863
D	MULTI-PURPOSE	02-105863
E	GYMNASIUM	02-105863
F	LOCKER / SHOWER	02-105863
G	LOCKER / SHOWER	02-105863

SITE LEGEND:

Symbol	LIMITS OF WORK
DF	EXISTING ACCESSIBLE DRINKING FOUNTAIN PER DSA APP# 02-105863
M	EXISTING ACCESSIBLE MEN'S RESTROOM PER DSA APP# 02-105863
W	EXISTING ACCESSIBLE WOMEN'S RESTROOM PER DSA APP# 02-105863
B	EXISTING ACCESSIBLE BOY'S RESTROOM PER DSA APP# 02-105863
G	EXISTING ACCESSIBLE GIRL'S RESTROOM PER DSA APP# 02-105863
1	ACCESSIBLE PARKING STALLS PER THIS APPLICATION
2	EXISTING ACCESSIBLE PARKING SIGNAGE PER DSA APP# 02-105863
3	TOW AWAY ENTRY SIGN PER THIS APPLICATION
4	EXISTING ACCESSIBLE RESTROOMS
5	EXISTING ACCESSIBLE DRINKING FOUNTAIN

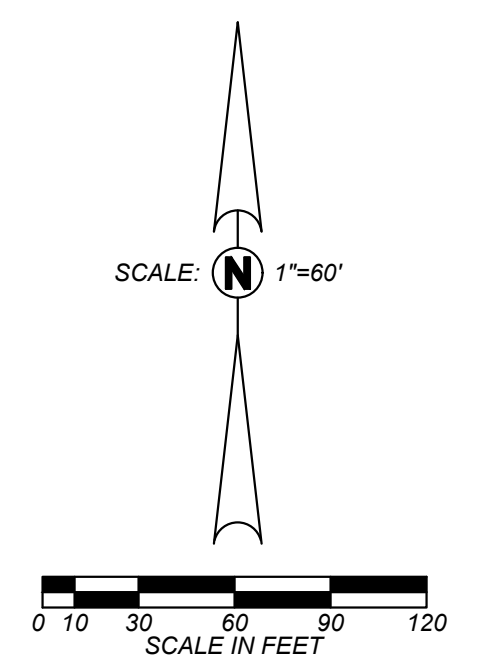
NOTES:

- DESIGN PROFESSIONAL IN GENERAL RESPONSIBLE CHARGE STATEMENT: THE PATH-OF-TRAVEL (P.O.T.) IDENTIFIED IN THESE CONSTRUCTION DOCUMENTS IS COMPLIANT WITH THE CURRENT APPLICABLE CALIFORNIA BUILDING CODE ACCESSIBILITY PROVISIONS FOR PATH OF TRAVEL REQUIREMENTS FOR ALTERATIONS, ADDITIONS AND STRUCTURAL REPAIRS. AS PART OF THE DESIGN OF THIS PROJECT, THE P.O.T. WAS EXAMINED AND ANY ELEMENTS, COMPONENTS OR PORTIONS OF THE P.O.T. THAT WERE DETERMINED TO BE NON-COMPLIANT 1) HAVE BEEN IDENTIFIED AND 2) THE CORRECTIVE WORK NECESSARY TO BRING THEM INTO COMPLIANCE HAS BEEN INCLUDED WITHIN THE SCOPE OF THIS PROJECT'S WORK THROUGH DETAILS, DRAWINGS, AND SPECIFICATIONS INCORPORATED INTO THESE CONSTRUCTION DOCUMENTS. ANY NON-COMPLIANT ELEMENTS, COMPONENTS OR PORTIONS OF THE P.O.T. THAT WILL NOT BE CORRECTED BY THIS PROJECT BASED ON VALUATION THRESHOLD LIMITATIONS OR A FINDING OF UNREASONABLE HARDSHIP ARE SO INDICATED IN THESE CONSTRUCTION DOCUMENTS.

 DURING CONSTRUCTION, IF P.O.T. ITEMS WITHIN THE SCOPE OF THE PROJECT REPRESENTED AS CODE COMPLIANT ARE FOUND TO BE NON-COMPLYING BEYOND REASONABLE CONSTRUCTION TOLERANCES, THEY SHALL BE BROUGHT INTO COMPLIANCE WITH THE CBC AS A PART OF THIS PROJECT BY MEANS OF A CONSTRUCTION CHANGE DOCUMENT.
- THE ENGINEER HAS SURVEYED/INSPECTED THE PATH OF TRAVEL (P.O.T.) AS INDICATED ON THE PLANS AND HAS FOUND IT TO BE, OR HAS INDICATED ON THE PLANS REMEDIAL WORK WHICH WOULD CAUSE IT TO BE, A BARRIER FREE ACCESSIBLE ROUTE:
 - AT LEAST 48" IN WIDTH; OR AS APPROVED BY CODE WITHOUT ABRUPT LEVEL CHANGES EXCEEDING 1/2" IF BEVELED AT 1:2 MAXIMUM SLOPE, OR VERTICAL LEVEL CHANGES EXCEEDING 1/4".
 - WITH A FIRM, STABLE, AND SLIP RESISTANT WALKING SURFACE, WITH A RUNNING SLOPE OF 1:20 OR LESS, UNLESS OTHERWISE INDICATED, AND A CROSS SLOPE OF 1:48 OR LESS.
 - IS FREE OF OVERHEAD OBSTRUCTIONS WITHIN 80" ABOVE THE WALKING SURFACE.
 - IS FREE OF OBJECTS WHICH PROTRUDE MORE THAN 4" BETWEEN THE HEIGHTS OF 27" AND 80" ABOVE THE WALKING SURFACE.
- PASSING SPACES (11B-403.5.3) OF 60"x60" MIN. ARE LOCATED NOT MORE THAN 200' APART. WALKS WITH CONTINUOUS GRADIENTS HAVE 60" IN LENGTH OF LEVEL AREAS (11B-403.7) NOT MORE THAN 400' APART. THERE IS NO DROP-OFF OVER 4" AT THE EDGE OF WALK OR LANDING UNLESS IDENTIFIED BY A GUARD, A HANDRAIL, OR WARNING CURB AT LEAST 6" IN HEIGHT ABOVE THE WALK (11B-303.5).

PARKING CALCULATIONS

LOT#	DSA APP #	STALLS PROVIDED	ACCESSIBLE STALLS PROVIDED	ACCESSIBLE STALLS REQUIRED PER CBC 11-B208.2
A	PER THIS APPLICATION	22	1 TOTAL, 1 VAN	1 TOTAL, 1 VAN
B	PER THIS APPLICATION	18	2 TOTAL, 1 VAN	1 TOTAL, 1 VAN
C	02-105863	371	8 TOTAL, 4 VAN	8 TOTAL, 1 VAN



Blair, Church & Flynn
 CONSULTING ENGINEERS
 455 Clovis Avenue, Suite 500
 Clovis, California 93612
 Tel: (559) 326-1400
 Fax: (559) 326-1500

3/14/23
 Date Signed

CONSULTANT	REF. & REV.	CLOVIS UNIFIED SCHOOL DISTRICT	
Blair, Church & Flynn Consulting Engineers 455 Clovis Avenue, Suite 500 Clovis, California 93612 Tel: (559) 326-1400 Fax: (559) 326-1500		2023 PAVEMENT REHABILITATION VARIOUS SITES GRANITE RIDGE INTERMEDIATE ACCESS COMPLIANCE PLAN	
		CONST. DOCUMENTS	GR.C01
		DR. BY: AH CH. BY: JF DATE: 01/21/2023 SCALE AS NOTED	

IDENTIFICATION STAMP
 DIV. OF THE STATE ARCHITECT
 APP: 02-121175 INC:
 REVIEWED FOR
 SS FLS ACS
 DATE: 03/16/2023

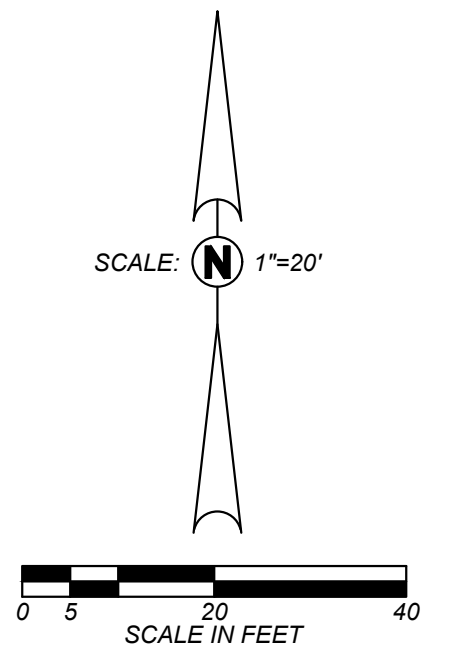
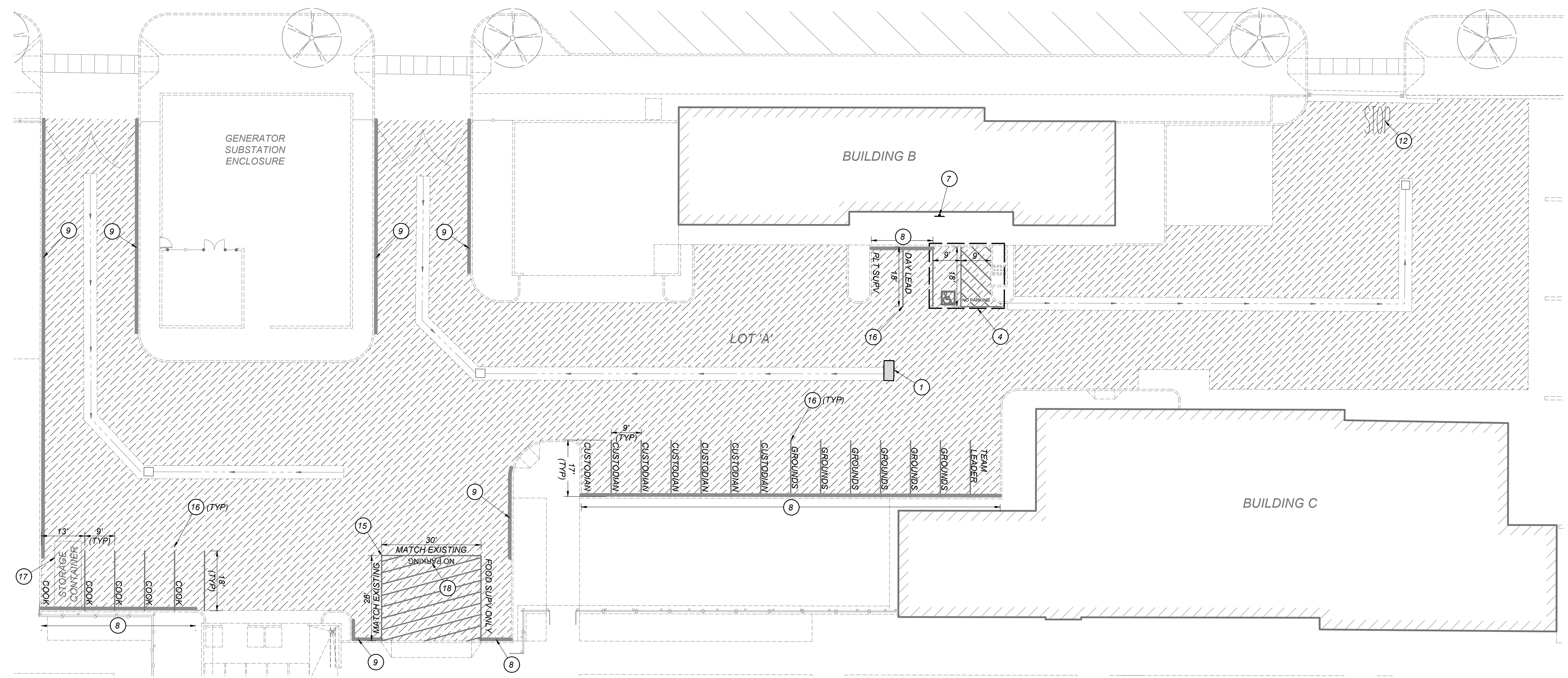
FOR DSA USE ONLY
 DSA APP# 02-121175

TYPICAL CONSTRUCTION LEGEND:

- DETAIL DESIGNATION
- DETAIL REFERENCE
- SHEET LOCATION
- [A/GRX-1] [DETAIL DESIGNATION / SHEET LOCATION]
- LIMITS OF ASPHALTIC CONCRETE PAVEMENT REMOVAL AND REPLACEMENT. ASPHALTIC CONCRETE AND AGGREGATE BASE THICKNESSES TO MATCH EXISTING. SEE [A/GRX.10]
- CRACKFILL PER [E/GR.X10] AND APPLY SEAL COAT PER THE PROJECT SPECIFICATIONS
- REPAIR CRACK PER [H/GR.X10]
- LIMITS OF PAINTED CURB

TYPICAL CONSTRUCTION KEYNOTES:

- 1 NEATLY SAW CUT, REMOVE AND REPLACE EXISTING ASPHALT PAVEMENT STRUCTURAL SECTION
- 2 CONCRETE CURB PER [I/GR.X10]
- 3 ANGLED ACCESSIBLE PARKING STALL. SEE [B/GR.X20] FOR ALL ACCESS REQUIREMENTS
- 4 STANDARD ACCESSIBLE PARKING STALL. SEE [A/GR.X20] FOR ALL ACCESS REQUIREMENTS
- 5 EXISTING ACCESSIBLE PARKING SIGNAGE THAT MEETS THE MINIMUM REQUIREMENTS OF [E/GR.X20]. NO WORK REQUIRED AS PART OF THIS PROJECT.
- 6 ACCESSIBLE ENTRY WARNING SIGN PER [D/GR.X20]
- 7 MOUNT "MINIMUM FINE \$250" SIGN BELOW EXISTING ACCESSIBLE PARKING STALL SIGN PER [C/GR.X20]
- 8 PAINT TOP AND FACE OF CURB YELLOW WITH 4" HIGH WHITE LETTERING, AS NOTED ON SITE PLAN
- 9 PAINT TOP AND FACE OF CURB RED WITH 4" HIGH WHITE LETTERING, "NO PARKING - FIRE LANE" AT 30' MAX. ON CENTER
- 10 PAINT TOP AND FACE OF CURB BLUE
- 11 PAINT TOP AND FACE OF CURB ORANGE WITH 4" HIGH WHITE LETTERING, AS NOTED ON SITE PLAN
- 12 PAINT 8" HIGH WHITE LETTERING "STOP" TO MATCH EXISTING
- 13 PAINT 12" WIDE YELLOW STRIPE TO MATCH EXISTING
- 14 PAINT 4" WIDE BLUE BORDER WITH 4" WIDE WHITE DIAGONAL LINES AT 3" ON CENTER
- 15 PAINT 4" WIDE WHITE BORDER WITH 4" WIDE WHITE DIAGONAL LINES AT 3" ON CENTER
- 16 PAINT 4" WIDE WHITE STRIPE
- 17 RELOCATE EXISTING STORAGE CONTAINER PER OWNER'S DIRECTION BEFORE BEGINNING WORK
- 18 PAINT 18" HIGH WHITE LETTERING "NO PARKING" TO MATCH EXISTING



A PARKING LOT 'A' ENLARGED SITE PLAN
 CN.C30

Blair, Church & Flynn
 CONSULTING ENGINEERS
 455. Clovis Avenue, Suite 500
 Clovis, California 93612
 Tel: (559) 326-1400
 Fax: (559) 326-1500

3/14/23
 Date Signed

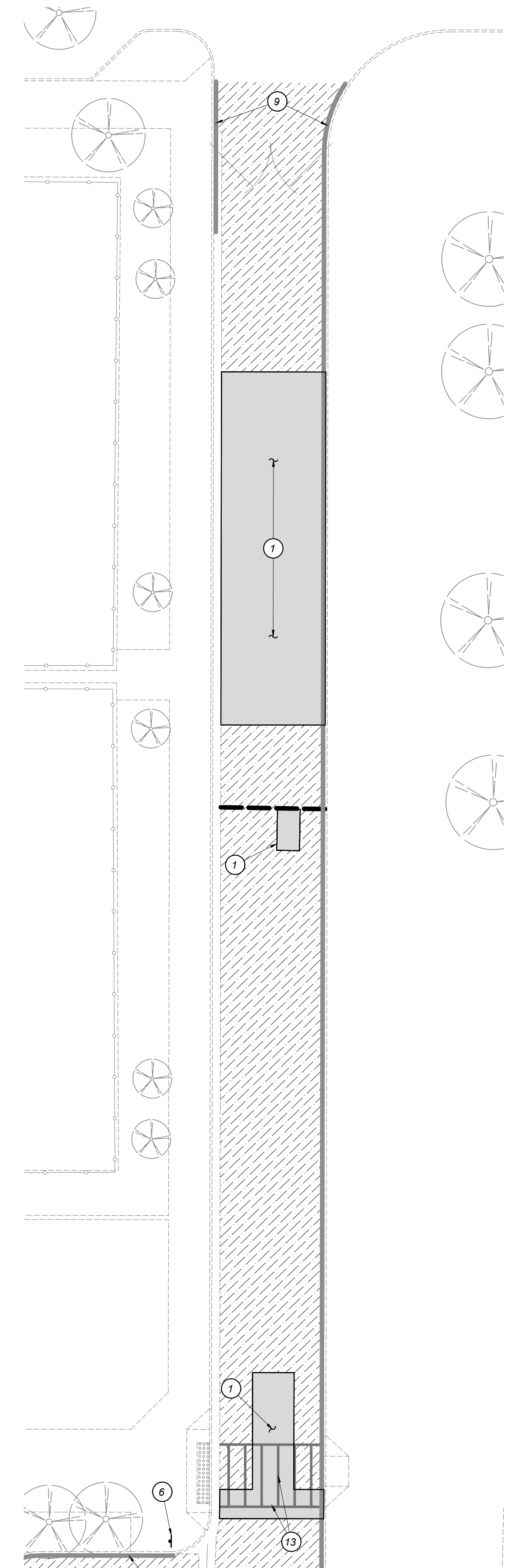
CONSULTANT	REF. & REV.	CLOVIS UNIFIED SCHOOL DISTRICT	
Blair, Church & Flynn Consulting Engineers 455. Clovis Avenue, Suite 500 Clovis, California 93612 Tel: (559) 326-1400 Fax: (559) 326-1500		2023 PAVEMENT REHABILITATION VARIOUS SITES GRANITE RIDGE INTERMEDIATE SITE PLAN	
		CONST. DOCUMENTS	GR.C30
		DR. BY: AH	
		CH. BY: JF	
		DATE: 01/21/2023	
		SCALE AS NOTED	

Drawing File: P:\2023\03\BlairChurchFlynn\0230312_ClovisUnifiedSchoolDistrict_PavementRehabilitation_VariousSites_SitePlan_A.1-2023.dwg
 Plot File: 0230312_ClovisUnifiedSchoolDistrict_PavementRehabilitation_VariousSites_SitePlan_A.1-2023.dwg

IDENTIFICATION STAMP
 DIV. OF THE STATE ARCHITECT
 APP: 02-121175 INC:
 REVIEWED FOR
 SS FLS ACS
 DATE: 03/16/2023

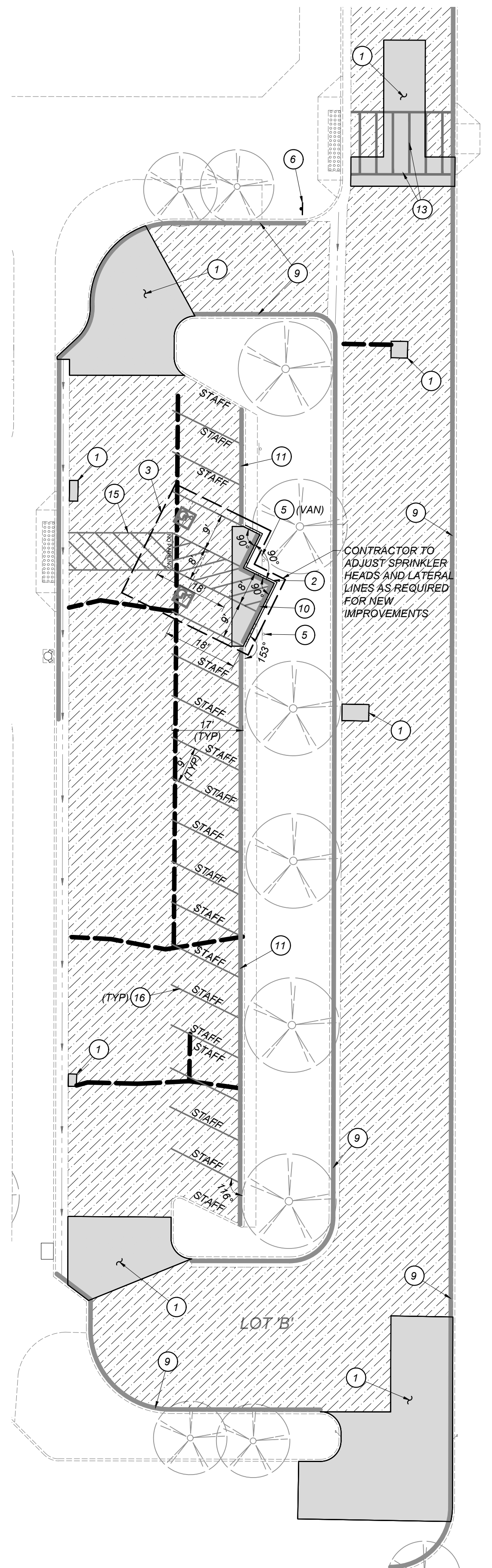
FOR DSA USE ONLY
 DSA APP# 02-121175

SEE BOTTOM LEFT FOR CONTINUATION



SEE TOP RIGHT FOR CONTINUATION

A PARKING LOT 'B' ENLARGED SITE PLAN
 GR.C31



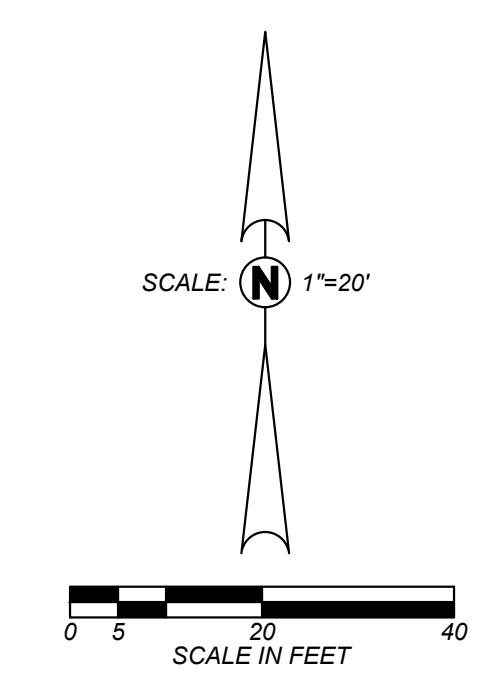
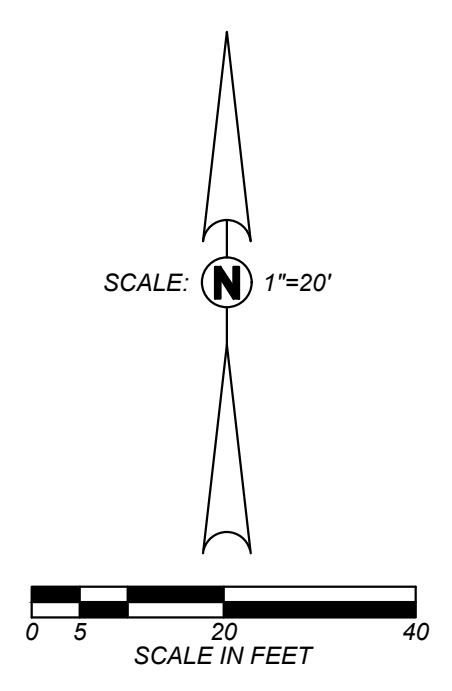
B PARKING LOT 'B' ENLARGED SITE PLAN
 GR.C31

TYPICAL CONSTRUCTION LEGEND:

- DETAIL DESIGNATION
- DETAIL REFERENCE
- SHEET LOCATION
- LIMITS OF ASPHALTIC CONCRETE PAVEMENT REMOVAL AND REPLACEMENT. ASPHALTIC CONCRETE AND AGGREGATE BASE THICKNESSES TO MATCH EXISTING. SEE [A/GRX.10]
- CRACKFILL PER [E/GR.X10] AND APPLY SEAL COAT PER THE PROJECT SPECIFICATIONS
- REPAIR CRACK PER [H/GR.X10]
- LIMITS OF PAINTED CURB

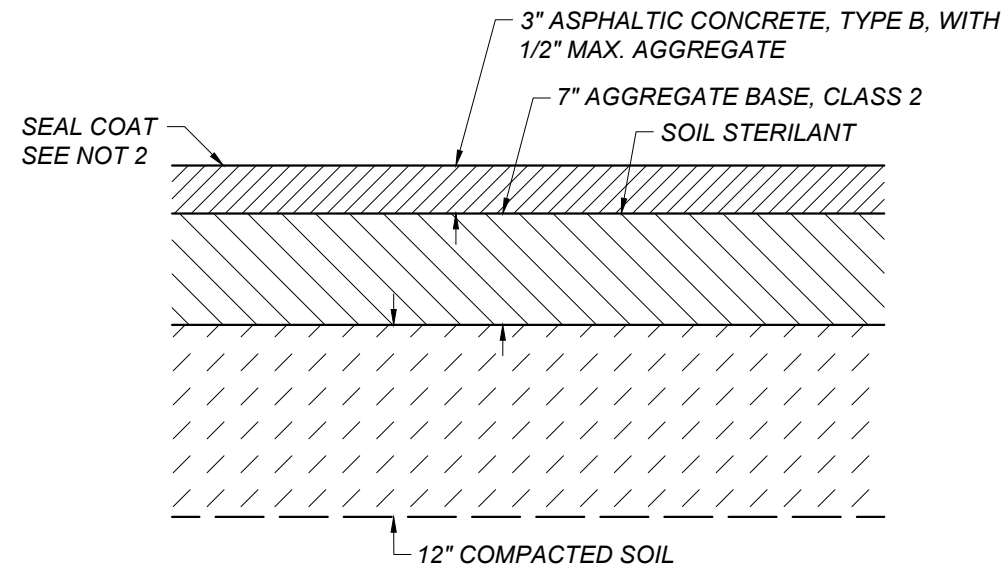
TYPICAL CONSTRUCTION KEYNOTES:

- 1 NEATLY SAW CUT, REMOVE AND REPLACE EXISTING ASPHALT PAVEMENT STRUCTURAL SECTION
- 2 CONCRETE CURB PER [I/GR.X10]
- 3 ANGLED ACCESSIBLE PARKING STALL. SEE [B/GR.X20] FOR ALL ACCESS REQUIREMENTS
- 4 STANDARD ACCESSIBLE PARKING STALL. SEE [A/GR.X20] FOR ALL ACCESS REQUIREMENTS
- 5 EXISTING ACCESSIBLE PARKING SIGNAGE THAT MEETS THE MINIMUM REQUIREMENTS OF [E/GR.X20]. NO WORK REQUIRED AS PART OF THIS PROJECT.
- 6 ACCESSIBLE ENTRY WARNING SIGN PER [D/GR.X20]
- 7 MOUNT "MINIMUM FINE \$250" SIGN BELOW EXISTING ACCESSIBLE PARKING STALL SIGN PER [C/GR.X20]
- 8 PAINT TOP AND FACE OF CURB YELLOW WITH 4" HIGH WHITE LETTERING, AS NOTED ON SITE PLAN
- 9 PAINT TOP AND FACE OF CURB RED WITH 4" HIGH WHITE LETTERING, "NO PARKING - FIRE LANE" AT 30' MAX. ON CENTER
- 10 PAINT TOP AND FACE OF CURB BLUE
- 11 PAINT TOP AND FACE OF CURB ORANGE WITH 4" HIGH WHITE LETTERING, AS NOTED ON SITE PLAN
- 12 PAINT 8" HIGH WHITE LETTERING "STOP" TO MATCH EXISTING
- 13 PAINT 12" WIDE YELLOW STRIPE TO MATCH EXISTING
- 14 PAINT 4" WIDE BLUE BORDER WITH 4" WIDE WHITE DIAGONAL LINES AT 3" ON CENTER
- 15 PAINT 4" WIDE WHITE BORDER WITH 4" WIDE WHITE DIAGONAL LINES AT 3" ON CENTER
- 16 PAINT 4" WIDE WHITE STRIPE
- 17 RELOCATE EXISTING STORAGE CONTAINER PER OWNER'S DIRECTION BEFORE BEGINNING WORK
- 18 PAINT 18" HIGH WHITE LETTERING "NO PARKING" TO MATCH EXISTING

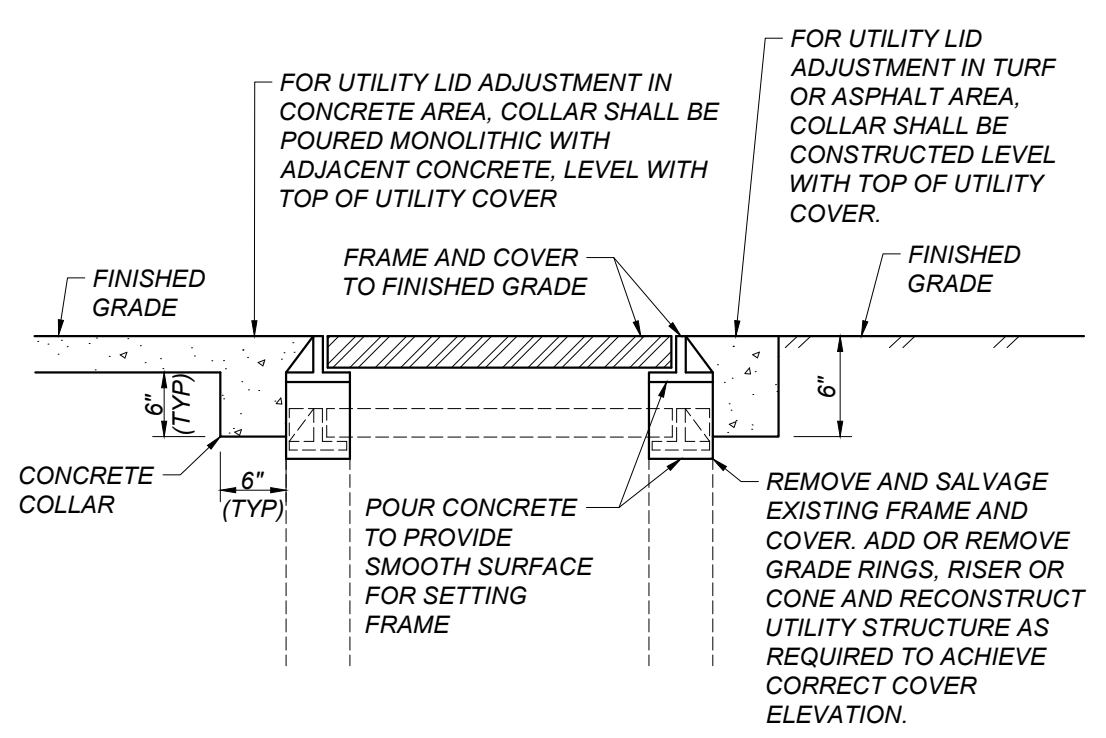


<p>Blair, Church & Flynn Consulting Engineers 455 Clovis Avenue, Suite 200 Clovis, California 93612 Tel (559) 326-1400 Fax (559) 326-1500</p>	<p>3/14/23 Date Signed</p>	CONSULTANT	REF. & REV.	CLOVIS UNIFIED SCHOOL DISTRICT	
		2023 PAVEMENT REHABILITATION VARIOUS SITES GRANITE RIDGE INTERMEDIATE SITE PLAN		CONST. DOCUMENTS	GR.C31

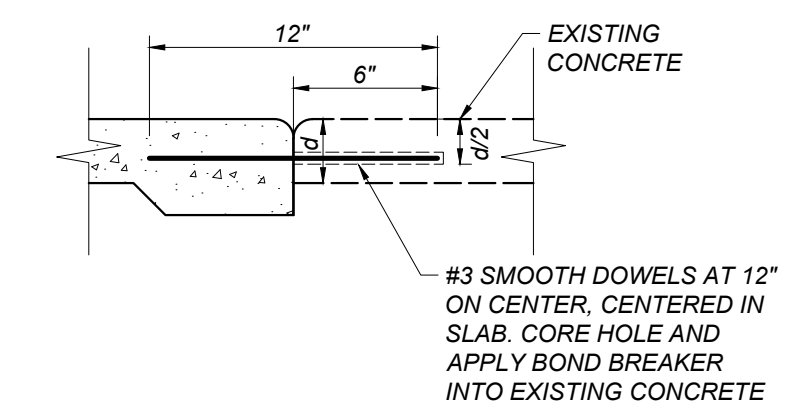
- NOTES:
 1. CONTRACTOR MAY SUBSTITUTE THE SECTION SHOWN IN DETAIL [D/GR.X10] FOR SMALL AREAS OF PAVEMENT REPLACEMENT
 2. SEAL COAT IS ONLY APPLIED TO NEW PAVEMENT WHEN IT IS ADJACENT TO EXISTING PAVEMENT THAT IS RECEIVING A SEAL COAT



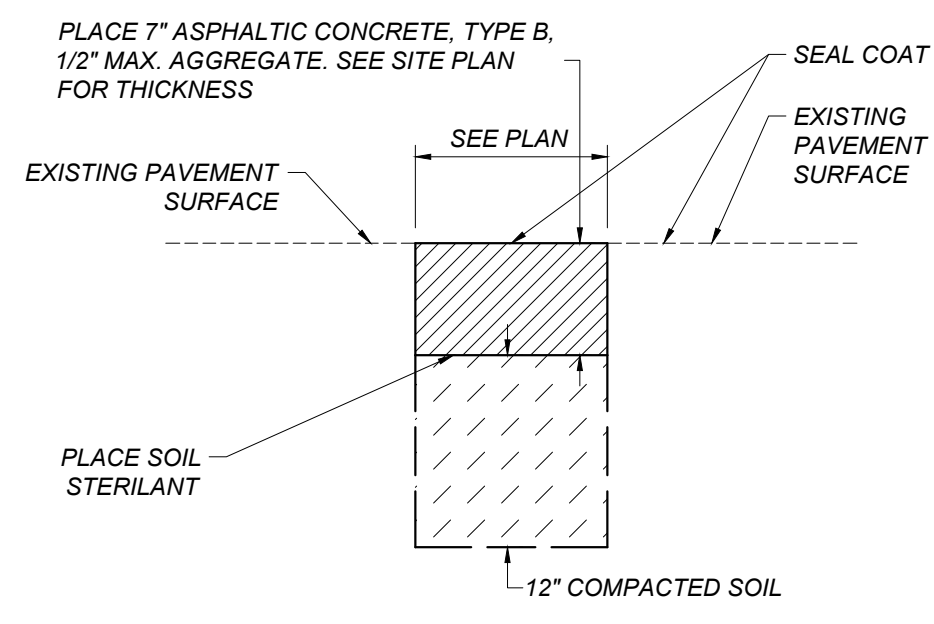
A ASPHALT CONCRETE PAVEMENT SECTION
 GR.X10 NOT TO SCALE



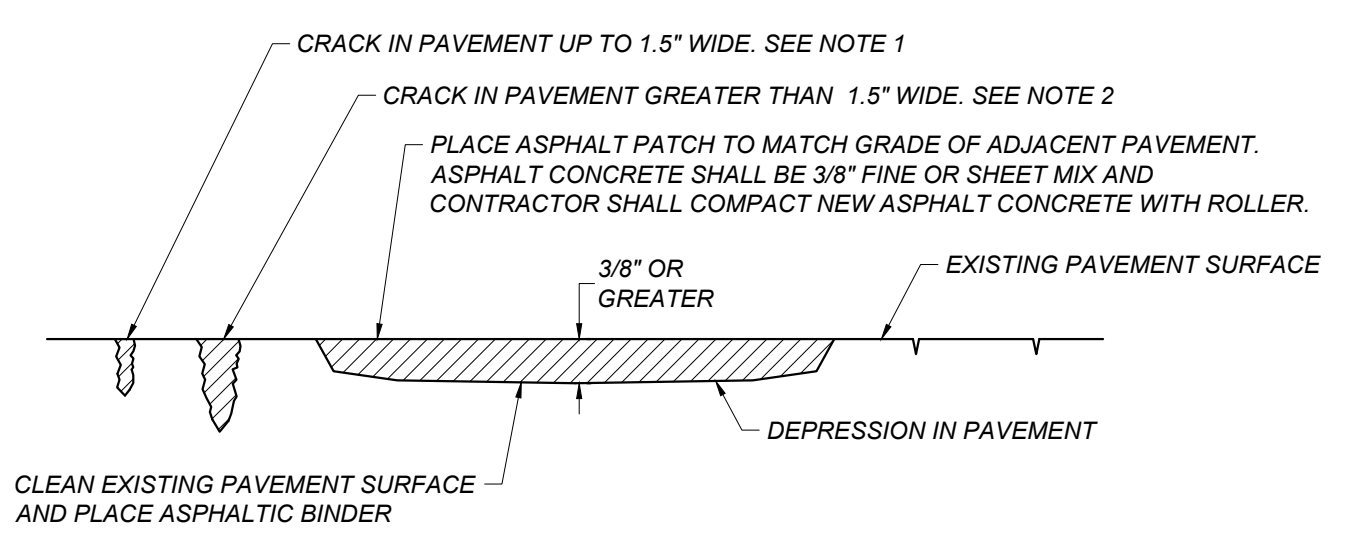
B ADJUST UTILITY LID
 GR.X10 NOT TO SCALE



C DOWEL BAR DETAIL
 GR.X10 NOT TO SCALE

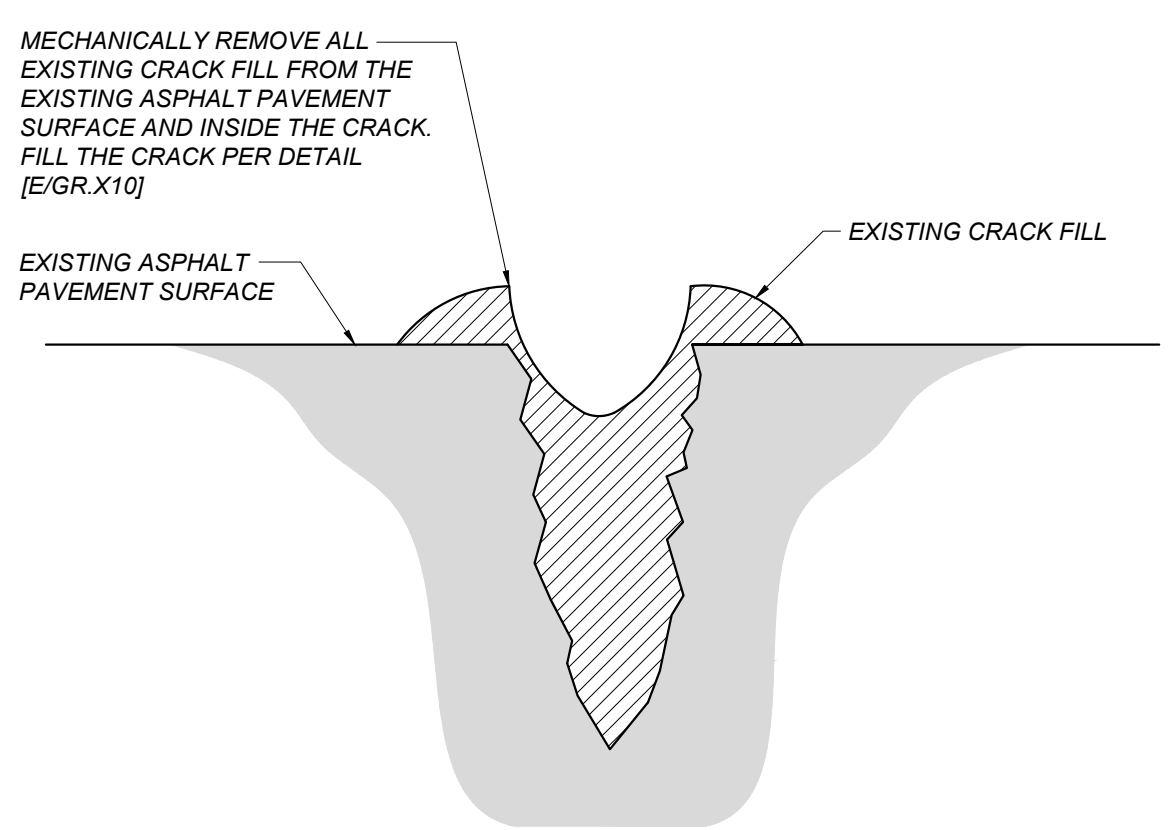


D ASPHALT CONCRETE PLUG
 GR.X10 NOT TO SCALE

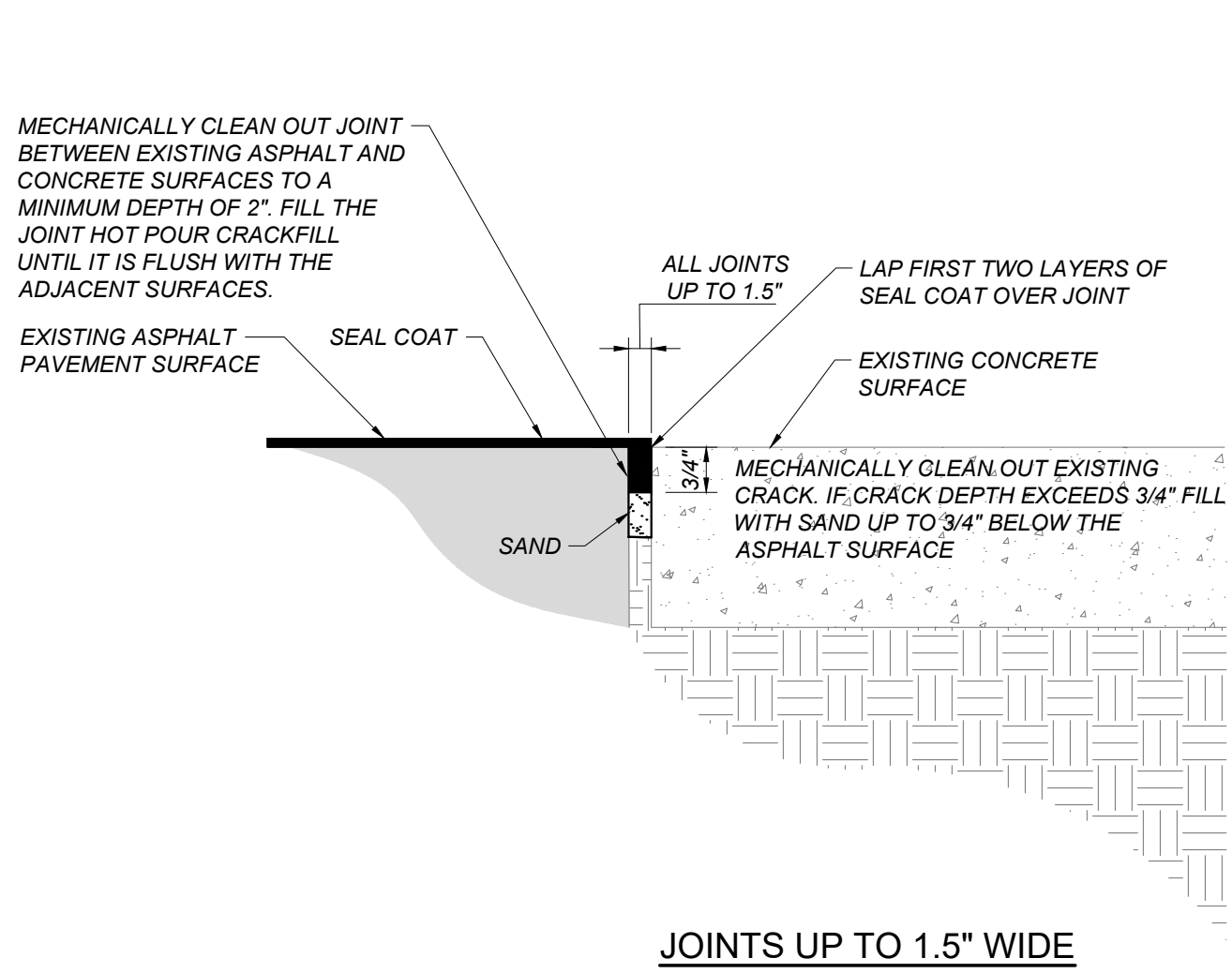


- NOTES:
 1. FOR CRACKS UP TO 1.5" IN WIDTH, MECHANICALLY CLEAN OUT EXISTING CRACK. IF CRACK DEPTH EXCEEDS 3/4" FILL WITH SAND UP TO 3/4" BELOW THE ASPHALT SURFACE AND FILL WITH HOT POUR CRACK FILL IN ACCORDANCE WITH THE PROJECT SPECIFICATIONS AND THE MANUFACTURER'S RECOMANDATIOS. CRACKFILL SHALL BE APPLIED UNTIL IT SETTLES FLUSH WITH ADJACENT PAVEMENT SURFACES.
 2. FOR CRACKS GREATER THAN 1.5" IN WIDTH, MECHANICALLY CLEAN CRACK TO A MINIMUM DEPTH OF 2". FILL THE CRACK AN ASPHALT FINES MIX AND COMPACT IT UNTIL IT IS FLUSH WITH THE EXISTING ASPHALT SURFACE PRIOR TO SEAL COAT APPLICATION.
 3. FOR CRACKS WITH EXISTING CRACK FILL, CLEAN CRACK PER DETAIL [F/GR.X10]

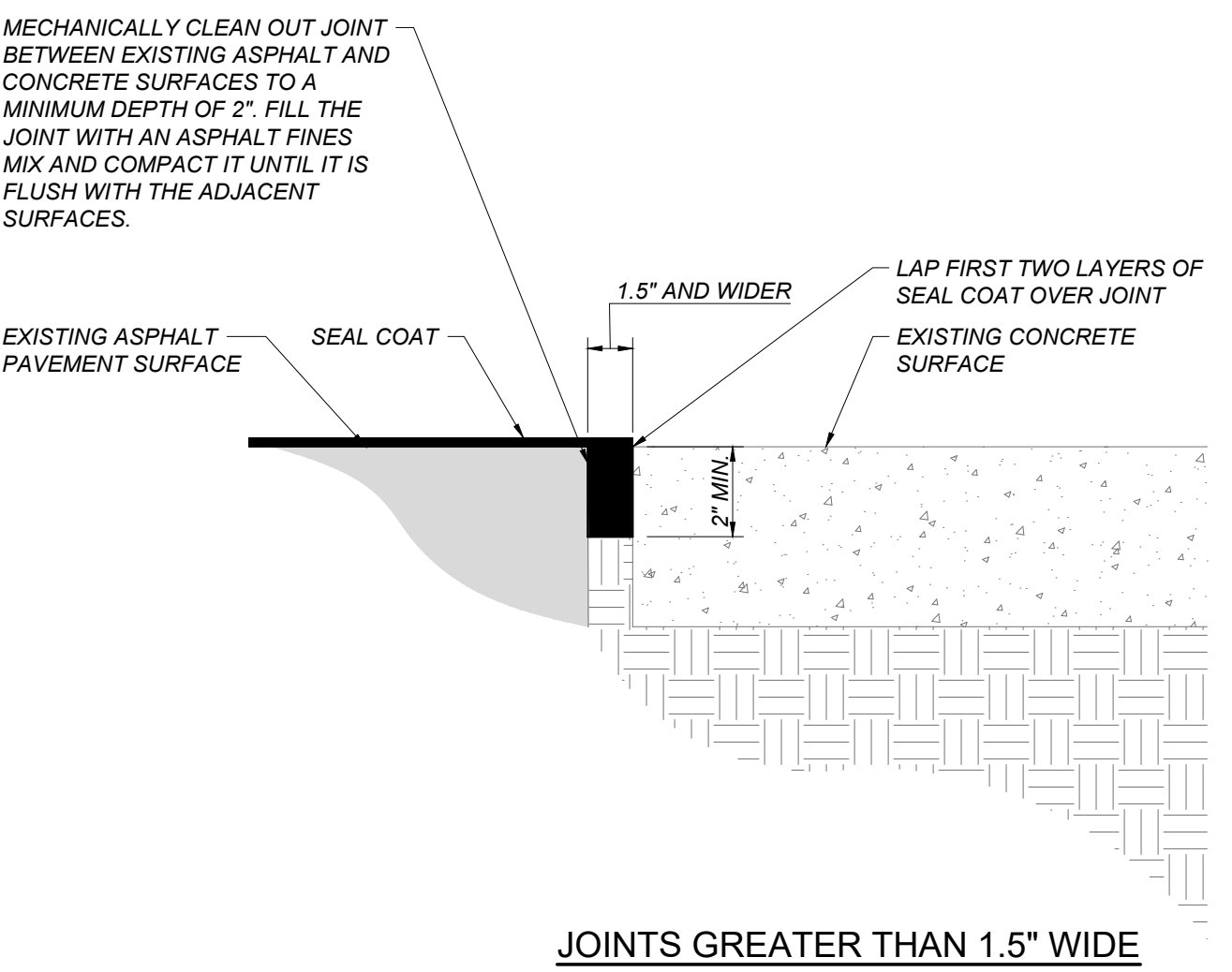
E CRACK PATCHING DETAIL
 GR.X10 NOT TO SCALE



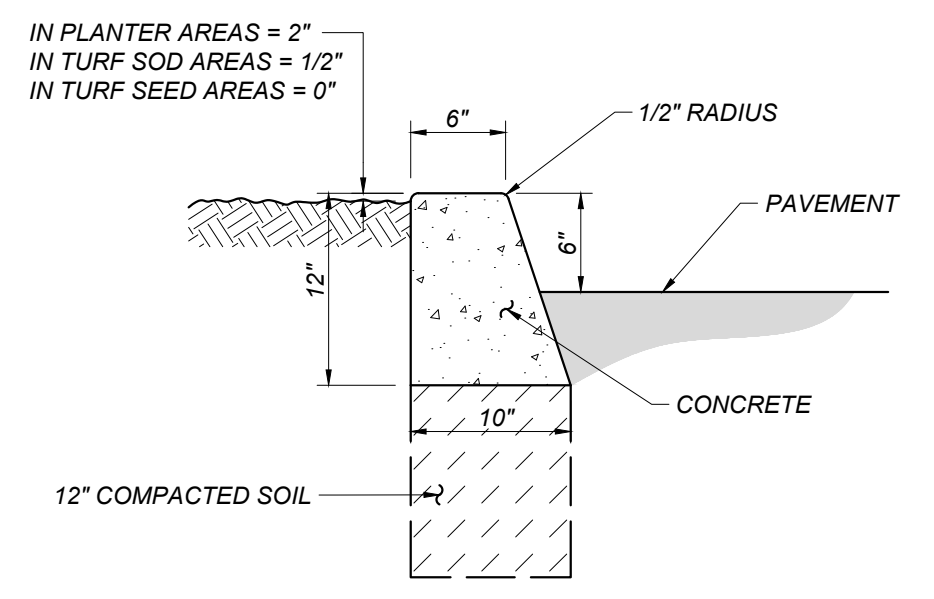
F CRACK FILL CLEANING DETAIL
 GR.X10 NOT TO SCALE



G ASPHALT EDGE CONDITION TREATMENT
 GR.X10 NOT TO SCALE



H CRACK REPAIR DETAIL
 GR.X10 NOT TO SCALE

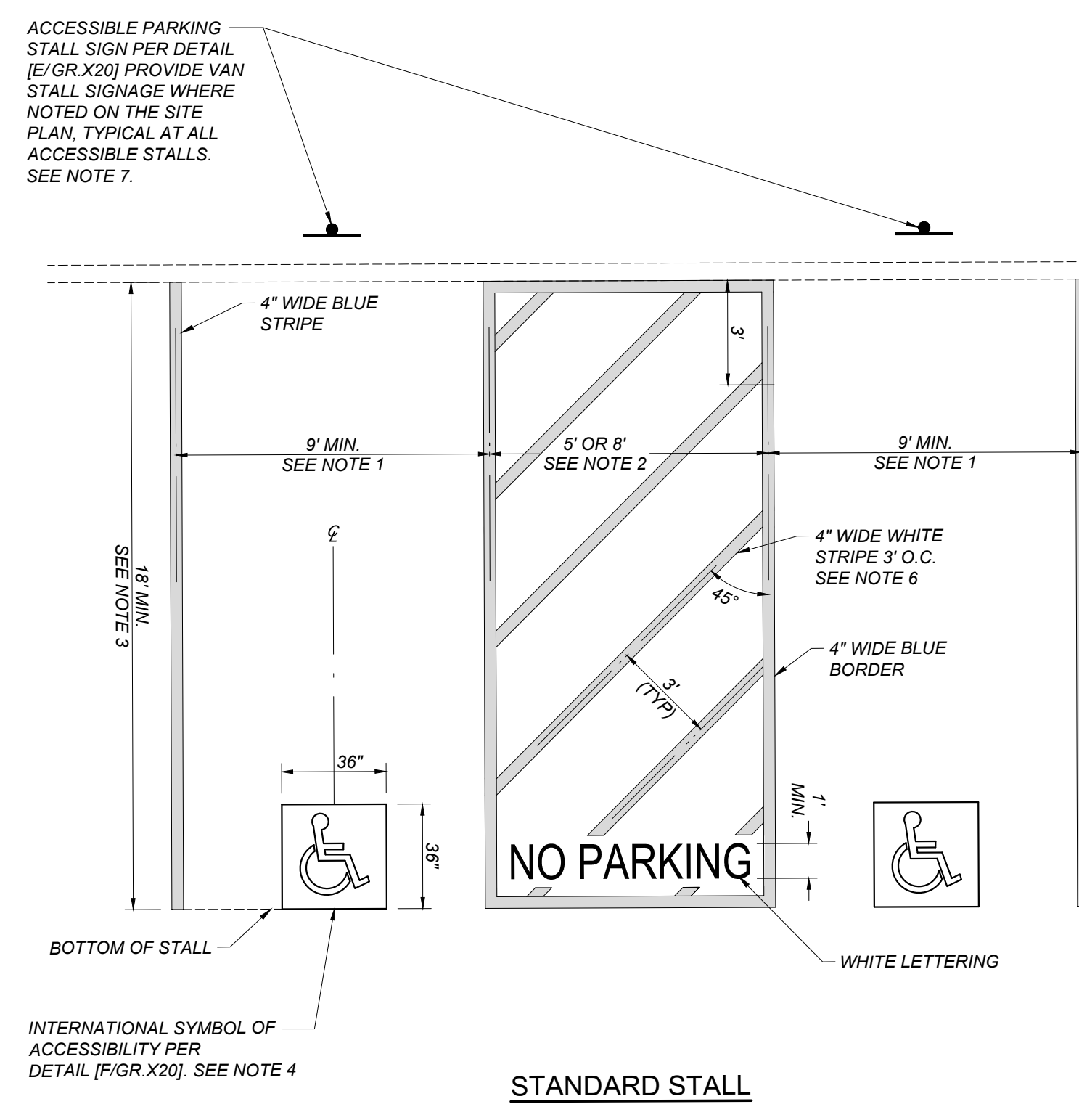


I 6" CONCRETE CURB
 GR.X10 NOT TO SCALE

Blair, Church & Flynn
 CONSULTING ENGINEERS
 455 Clovis Avenue, Suite 500
 Clovis, California 93612
 Tel (559) 326-1400
 Fax (559) 326-1500

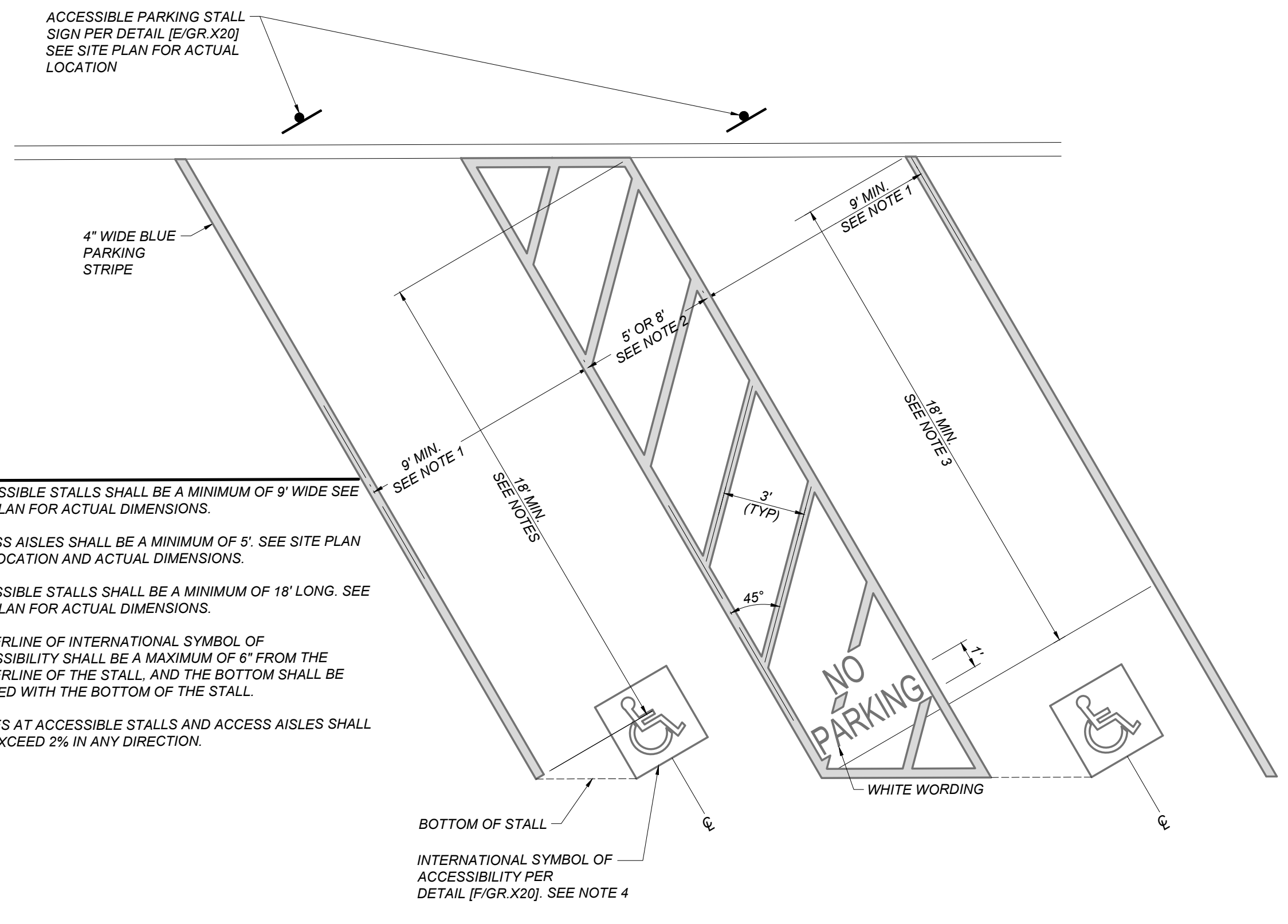
3/14/23
 Date Signed

CONSULTANT	REF. & REV.	CLOVIS UNIFIED SCHOOL DISTRICT	CONST. DOCUMENTS
Blair, Church & Flynn Consulting Engineers 455 Clovis Avenue, Suite 500 Clovis, California 93612 Tel (559) 326-1400 Fax (559) 326-1500		2023 PAVEMENT REHABILITATION VARIOUS SITES GRANITE RIDGE INTERMEDIATE DETAILS	GR.X10
			DR. BY: AH CH. BY: JF DATE: 01/21/2023 SCALE AS NOTED



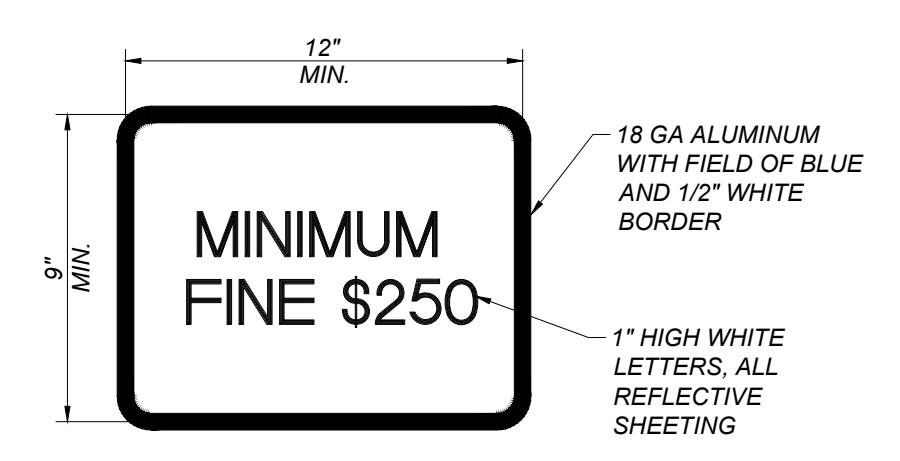
- NOTES:**
1. ACCESSIBLE STALLS SHALL BE A MINIMUM OF 9' WIDE. SEE SITE PLAN FOR ACTUAL DIMENSIONS.
 2. ACCESS AISLES SHALL BE A MINIMUM OF 5' AND 8' WHEN ADJACENT TO A VAN ACCESSIBLE STALL. SEE SITE PLAN FOR LOCATION AND ACTUAL DIMENSIONS.
 3. ACCESSIBLE STALLS SHALL BE A MINIMUM OF 18' LONG. SEE SITE PLAN FOR ACTUAL DIMENSIONS.
 4. CENTERLINE OF INTERNATIONAL SYMBOL OF ACCESSIBILITY SHALL BE A MAXIMUM OF 6" FROM THE CENTERLINE OF THE STALL, AND THE BOTTOM SHALL BE ALIGNED WITH THE BOTTOM OF THE STALL.
 5. SLOPES AT ACCESSIBLE STALLS AND ACCESS AISLES SHALL NOT EXCEED 2% IN ANY DIRECTION.
 6. PROVIDE BLUE HATCHED LINES WHEN ACCESS AISLE IS STRIPED ON CONCRETE TO COMPLY WITH CBC 11B-502.3.3
 7. REFER TO SITE PLAN TO DETERMINE IF EXISTING ADA COMPLIANT PARKING SIGNAGE EXISTS. IF IT DOES, DO NOT INSTALL NEW SIGNAGE.

A ACCESSIBLE PARKING STALL DETAIL
 GR.X20 NOT TO SCALE

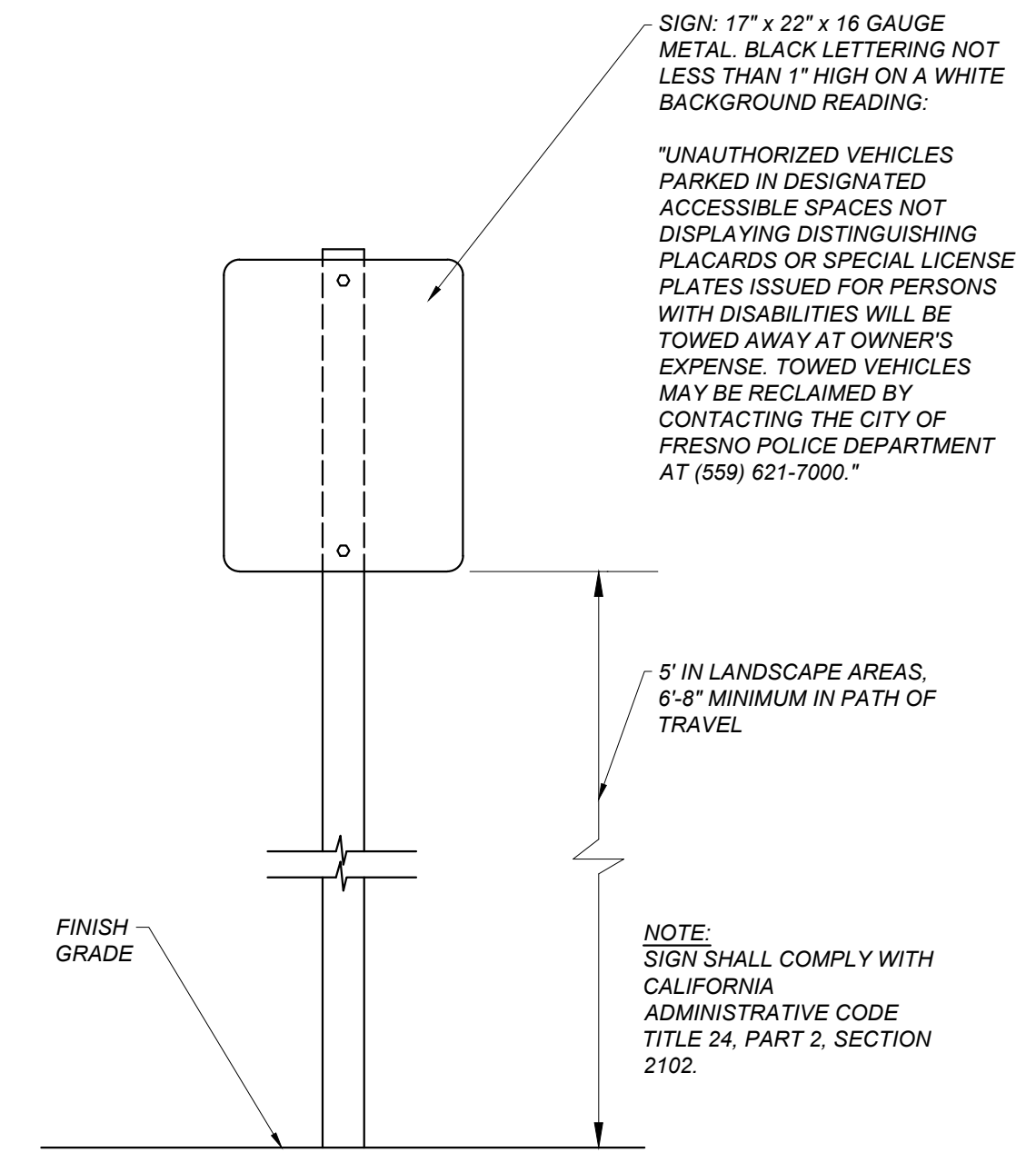


- NOTES:**
1. ACCESSIBLE STALLS SHALL BE A MINIMUM OF 9' WIDE SEE SITE PLAN FOR ACTUAL DIMENSIONS.
 2. ACCESS AISLES SHALL BE A MINIMUM OF 5'. SEE SITE PLAN FOR LOCATION AND ACTUAL DIMENSIONS.
 3. ACCESSIBLE STALLS SHALL BE A MINIMUM OF 18' LONG. SEE SITE PLAN FOR ACTUAL DIMENSIONS.
 4. CENTERLINE OF INTERNATIONAL SYMBOL OF ACCESSIBILITY SHALL BE A MAXIMUM OF 6" FROM THE CENTERLINE OF THE STALL, AND THE BOTTOM SHALL BE ALIGNED WITH THE BOTTOM OF THE STALL.
 5. SLOPES AT ACCESSIBLE STALLS AND ACCESS AISLES SHALL NOT EXCEED 2% IN ANY DIRECTION.

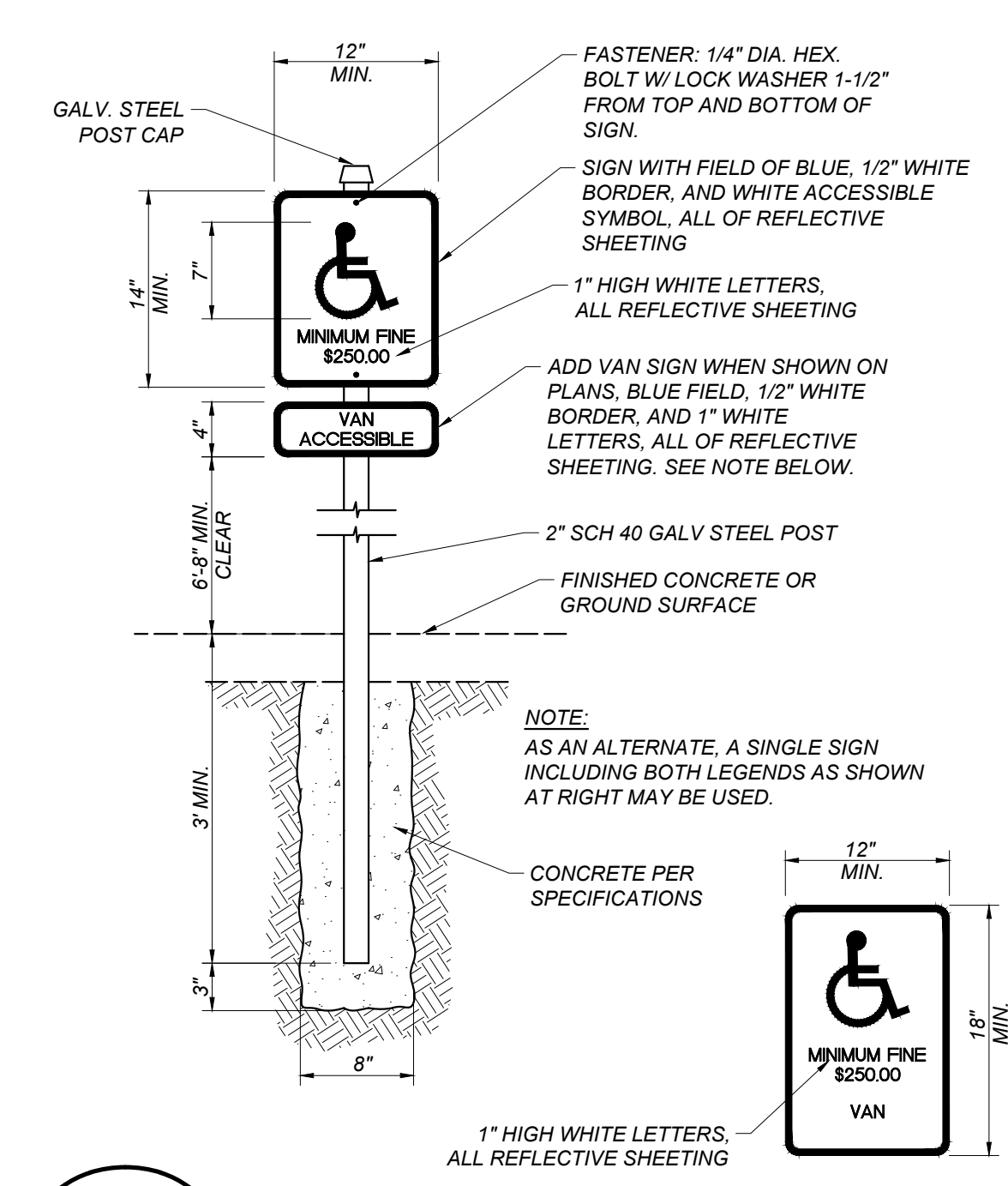
B ANGLED ACCESSIBLE PARKING STALL DETAIL
 GR.X20 NOT TO SCALE



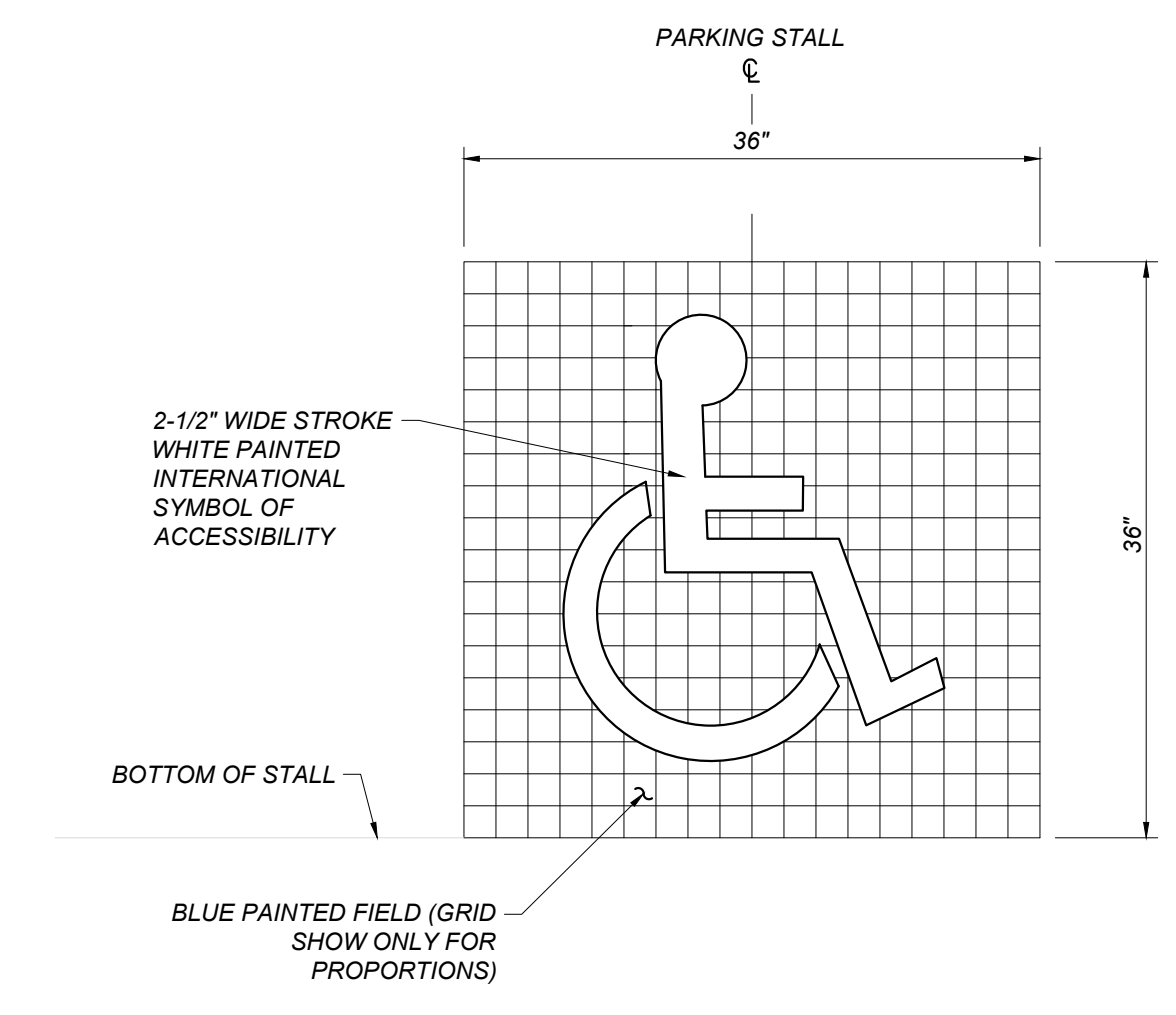
C MINIMUM FINE \$250 SIGN
 GR.X20 NOT TO SCALE



D ENTRY SIGN
 GR.X20 NOT TO SCALE



E ACCESSIBLE PARKING STALL SIGNAGE
 GR.X20 NOT TO SCALE



F ACCESSIBLE SYMBOL
 GR.X20 NOT TO SCALE