

IDENTIFICATION STAMP
 DIV. OF THE STATE ARCHITECT
 APP: 02-121178 INC:
 REVIEWED FOR
 SS FLS ACS
 DATE: 03/16/2023

FOR DSA USE ONLY
 DSA APP # 02-121178

PARKING CALCULATIONS:

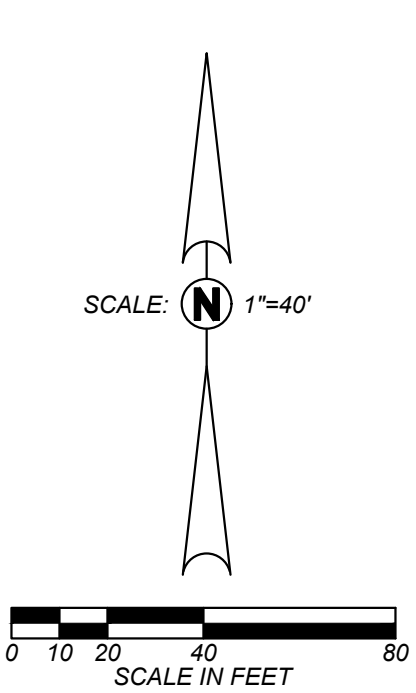
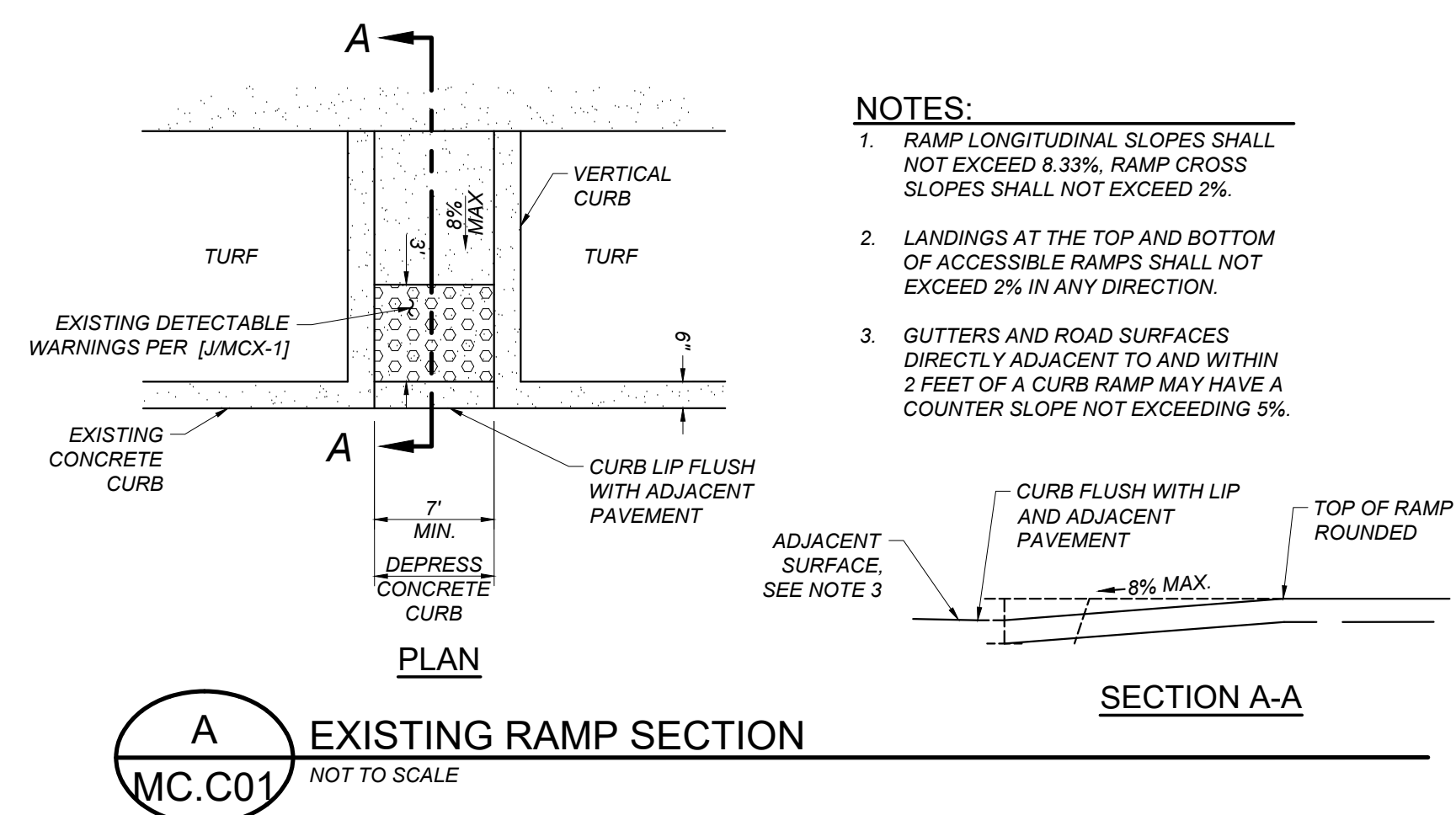
LOT#	DSA APP #	TOTAL STALLS PROVIDED (INCLUDES ACCESSIBLE STALLS)	ACCESSIBLE STALLS PROVIDED	ACCESSIBLE STALLS REQUIRED PER CBC 11-B208.2
A	02-114555, 02-118337	68	5 TOTAL (3 VAN)	3 TOTAL (1 VAN)

BUILDING LEGEND:

ID	BUILDING USE	DSA APP #
A	CLASSROOMS	42430, 02-106879, 02-109980, 02-114555
B	CLASSROOMS	42430, 02-106879, 02-109980, 02-114555
C	KINDERGARTEN	42430, 02-106879, 02-109980
D	LMC	42430, 02-106879, 02-109980, 02-114555
E	MPR/ADMIN	42430, 02-106879, 02-109980, 02-114555
R	SNACK BAR	42430, 02-109980, 02-114555
P24	PORTABLE	50209, 02-109980, 02-114555
P25	PORTABLE	50209, 02-109980, 02-114555
P28	PORTABLE	101420, 02-109980, 02-114555
P29	PORTABLE	68134, 02-109980, 02-114555
P30	PORTABLE	65409, 02-109980, 02-114555

SITE LEGEND:

- LIMITS OF WORK
- EXISTING ACCESSIBLE UNISEX RESTROOM
- EXISTING ACCESSIBLE MEN'S RESTROOM
- EXISTING ACCESSIBLE WOMEN'S RESTROOM
- EXISTING ACCESSIBLE BOY'S RESTROOM
- EXISTING ACCESSIBLE GIRL'S RESTROOM
- EXISTING ACCESSIBLE DRINKING FOUNTAIN
- EXISTING ACCESSIBLE PARKING STALLS AND SIGNAGE PER DSA APP # 02-118337
- EXISTING ACCESSIBLE PARKING STALLS AND SIGNAGE PER DSA APP # 02-114555
- EXISTING ENTRY TOW AWAY SIGN PER DSA APP # 02-118337
- EXISTING ACCESSIBLE RESTROOMS PER DSA APP # 02-109980
- EXISTING ACCESSIBLE DRINKING FOUNTAIN PER DSA APP # 02-109980
- ACCESSIBLE CURB RAMP PER PER DSA APP # 02-118337
- ACCESSIBLE CURB RAMP THAT MEETS THE MINIMUM REQUIREMENTS OF [AMC-01]



NOTES:

- DESIGN PROFESSIONAL IN GENERAL RESPONSIBLE CHARGE STATEMENT: THE PATH OF TRAVEL (P.O.T.) IDENTIFIED IN THESE CONSTRUCTION DOCUMENTS IS COMPLIANT WITH THE CURRENT APPLICABLE CALIFORNIA BUILDING CODE ACCESSIBILITY PROVISIONS FOR PATH OF TRAVEL REQUIREMENTS FOR ALTERATIONS, ADDITIONS AND STRUCTURAL REPAIRS. AS PART OF THE DESIGN OF THIS PROJECT, THE P.O.T. WAS EXAMINED AND ANY ELEMENTS, COMPONENTS OF PORTIONS OF THE P.O.T. THAT WERE DETERMINED TO BE NON-COMPLIANT 1) HAVE BEEN IDENTIFIED AND 2) THE CORRECTIVE WORK NECESSARY TO BRING THEM INTO COMPLIANCE HAS BEEN INCLUDED WITHIN THE SCOPE OF THIS PROJECT'S WORK THROUGH DETAILS, DRAWINGS, AND SPECIFICATIONS INCORPORATED INTO THESE CONSTRUCTION DOCUMENTS. ANY NON-COMPLIANT ELEMENTS, COMPONENTS OR PORTIONS OF THE P.O.T. THAT WILL NOT BE CORRECTED BY THIS PROJECT BASED ON VALUATION THRESHOLD LIMITATIONS OR A FINDING OF UNREASONABLE HARDSHIP ARE SO INDICATED IN THESE CONSTRUCTION DOCUMENTS.
- DURING CONSTRUCTION, IF P.O.T. ITEMS WITHIN THE SCOPE OF THE PROJECT REPRESENTED AS CODE COMPLIANT ARE FOUND TO BE NON-COMPLYING BEYOND REASONABLE CONSTRUCTION TOLERANCES, THEY SHALL BE BROUGHT INTO COMPLIANCE WITH THE CBC AS A PART OF THIS PROJECT BY MEANS OF A CONSTRUCTION CHANGE DOCUMENT.
- THE ENGINEER HAS SURVEYED/INSPECTED THE PATH OF TRAVEL (P.O.T.) AS INDICATED ON THE PLANS AND HAS FOUND IT TO BE, OR HAS INDICATED ON THE PLANS REMEDIAL WORK WHICH WOULD CAUSE IT TO BE, A BARRIER FREE ACCESSIBLE ROUTE:
 - AT LEAST 48" IN WIDTH, OR AS APPROVED BY CODE, WITHOUT ABRUPT LEVEL CHANGES EXCEEDING 1/2" IF BEVELED AT 1:2 MAXIMUM SLOPE, OR VERTICAL LEVEL CHANGES EXCEEDING 1/4".
 - WITH A FIRM, STABLE, AND SLIP RESISTANT WALKING SURFACE, WITH A RUNNING SLOPE OF 1:20 OR LESS, UNLESS OTHERWISE INDICATED, AND A CROSS SLOPE OF 1:48 OR LESS.
 - IS FREE OF OVERHEAD OBSTRUCTIONS WITHIN 80" ABOVE THE WALKING SURFACE
 - IS FREE OF OBJECTS WHICH PROTRUDE MORE THAN 4" BETWEEN THE HEIGHTS OF 27" AND 80" ABOVE THE WALKING SURFACE.
- PASSING SPACES (11B-403.5.3) OF 60"x60" MIN. ARE LOCATED NOT MORE THAN 200' APART. WALKS WITH CONTINUOUS GRADIENTS HAVE 60" IN LENGTH OF LEVEL AREAS (11B-403.7) NOT MORE THAN 400' APART. THERE IS NO DROP-OFF OVER 4" AT THE EDGE OF WALK OR LANDING UNLESS IDENTIFIED BY A GUARD, A HANDRAIL, OR WARNING CURB AT LEAST 6" IN HEIGHT ABOVE THE WALK (11B-303.5).

Blair, Church & Flynn
 CONSULTING ENGINEERS
 485 Clovis Avenue, Suite 200
 Clovis, California 93612
 Tel (559) 326-1400
 Fax (559) 326-1500

3/14/23
 Date Signed

CONSULTANT	REF. & REV.
Blair, Church & Flynn Consulting Engineers 485 Clovis Avenue, Suite 200 Clovis, California 93612 Tel (559) 326-1400 Fax (559) 326-1500	

CLOVIS UNIFIED SCHOOL DISTRICT




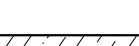

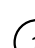





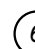


2023 PAVEMENT REHABILITATION
 VARIOUS SITES
MICKEY COX ELEMENTARY
 ACCESS COMPLIANCE PLAN

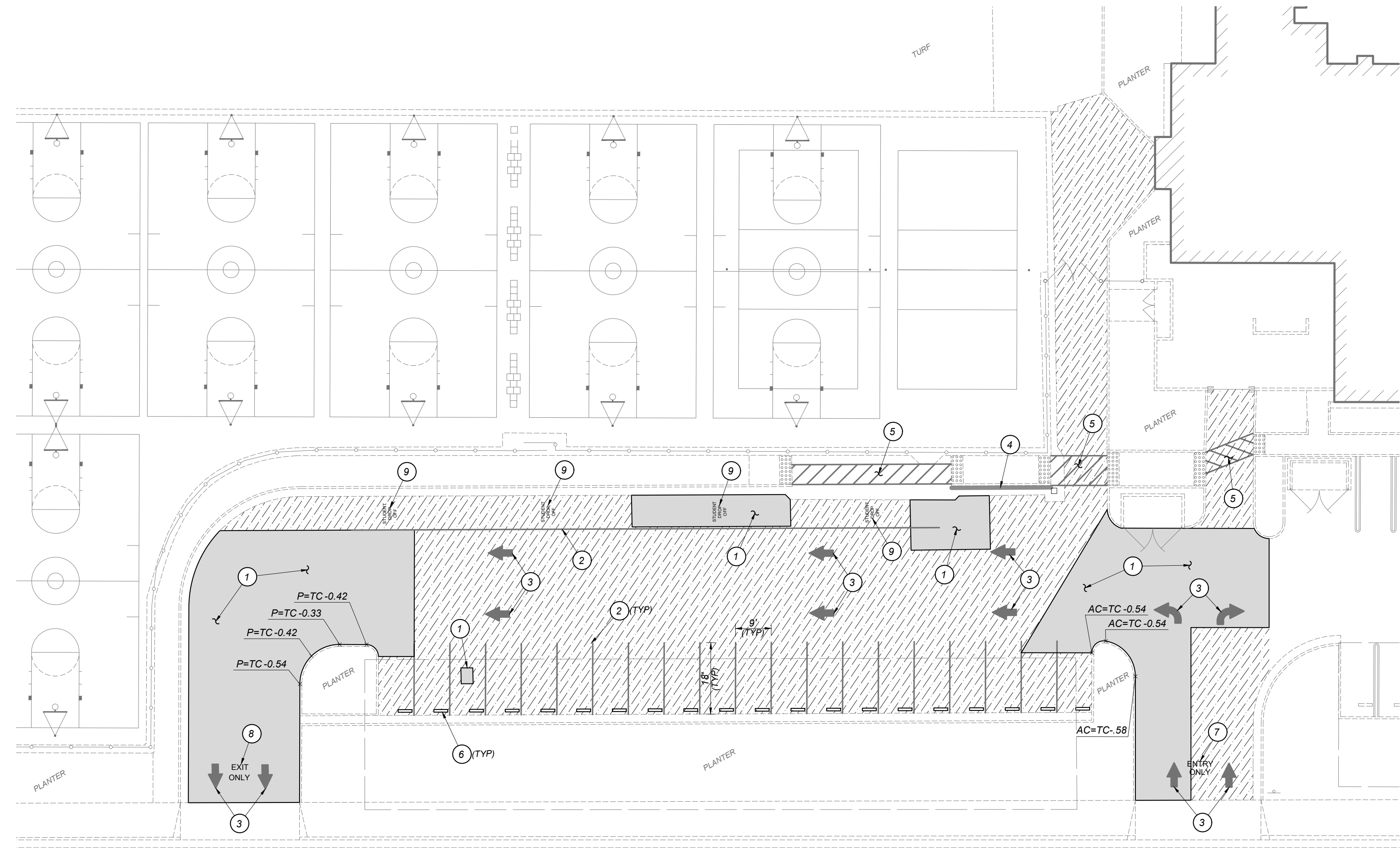
CONST. DOCUMENTS

DR. BY: AH
 CH. BY: AH
 DATE: 01/21/2023
 SCALE AS NOTED

MC.C01

CONSTRUCTION LEGEND:

-  **A-** DETAIL DESIGNATION
MC X10 DETAIL REFERENCE SHEET LOCATION
-  [A/MC.X10] [DETAIL DESIGNATION / SHEET LOCATION]
-  LIMITS OF ASPHALTIC CONCRETE PAVEMENT STRUCTURAL SECTION REMOVAL AND REPLACEMENT PER [A/MC.X10]
-  CRACKFILL PER [F/MC.X10] AND APPLY SEAL COAT PER THE PROJECT SPECIFICATIONS
-  LIMITS OF PAINTED CURB
-  ① NEATLY SAWCUT, REMOVE AND REPLACE EXISTING ASPHALT PAVEMENT STRUCTURAL SECTION
-  ② PAINT 4" WIDE WHITE STRIPE
-  ③ PAINT DIRECTION ARROW WHITE PER [H/MC.X10]
-  ④ PAINT TOP AND FACE OF CURB YELLOW.
-  ⑤ PAINT 4" WIDE WHITE BORDER WITH 4" WIDE WHITE DIAGONAL LINES AT 3' ON CENTER
-  ⑥ REMOVE AND SALVAGE EXISTING WHEELSTOPS FOR RE-INSTALLATION, REINSTALL AFTER SEAL COAT APPLICATION PER [H/MC.X10]
-  ⑦ PAINT 24" HIGH WHITE LETTERING 'ENTRY ONLY' TO MATCH EXISTING
-  ⑧ PAINT 24" HIGH WHITE LETTERING 'EXIT ONLY' TO MATCH EXISTING
-  ⑨ PAINT 12" HIGH WHITE LETTERING 'STUDENT DROP OFF' TO MATCH EXISTING



SIERRA AVE

Blair, Church & Flynn
 CONSULTING ENGINEERS

3/14/23
 Date Signed

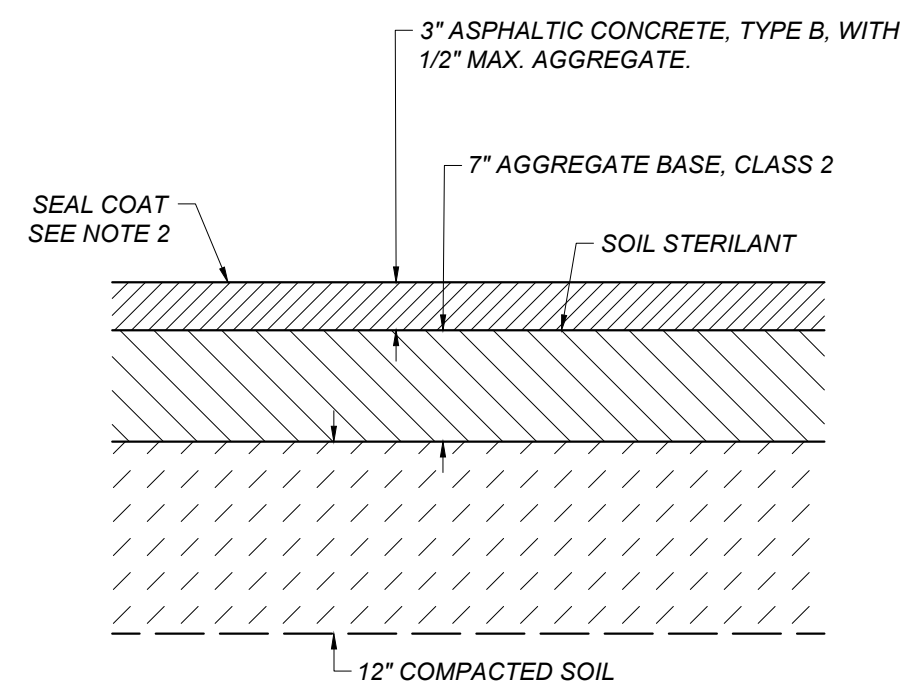
CONSULTANT

Blair, Church & Flynn
 Consulting Engineers
 485. Clovis Avenue,
 Suite 200
 Clovis, California 93612
 Tel (559) 326-1400
 Fax (559) 326-1500

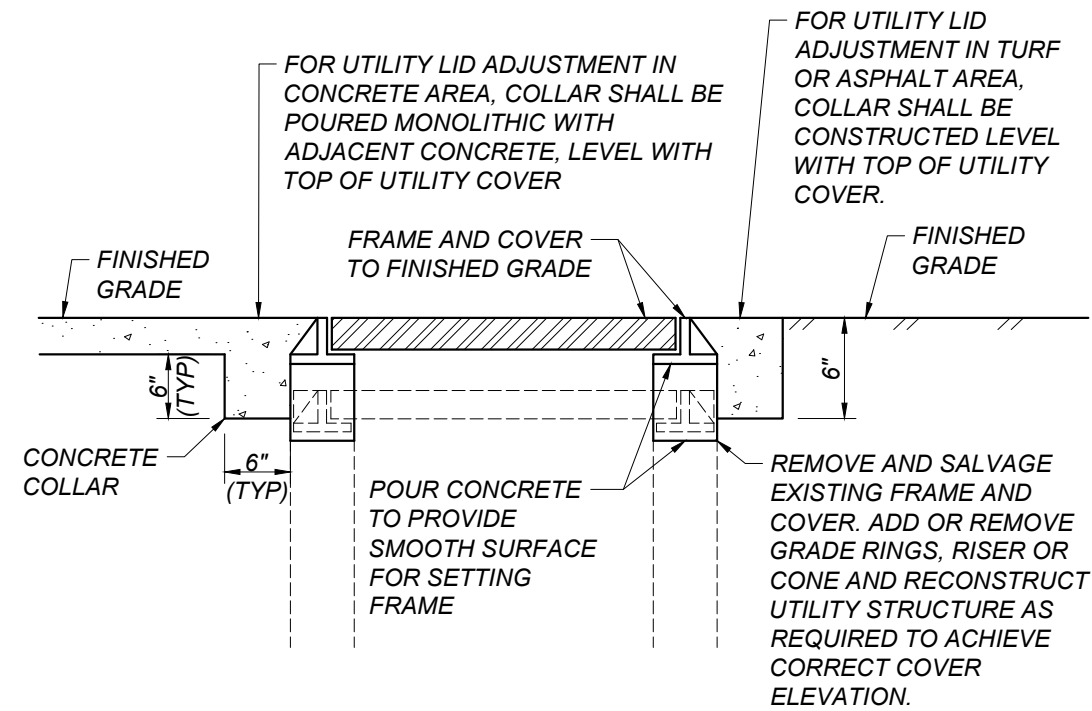
REF. & REV.	CLOVIS UNIFIED SCHOOL DISTRICT	CONST. DOCUMENTS
	2023 PAVEMENT REHABILITATION VARIOUS SITES MICKEY COX ELEMENTARY SITE PLAN	DR. BY: AH CH. BY: JF DATE: 01/21/2023 SCALE AS NOTED
		MC.C30

C:\Users\jflynn\OneDrive\Documents\2023\20230314\20230314_Mickey_Cox_Elementary_Site_Plan.dwg
 Plot by: jflynn, Mar 15, 2023 5:17pm

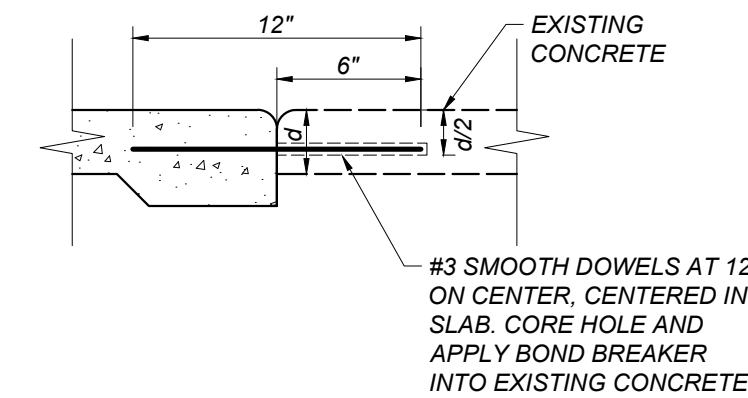
- NOTES:
 1. CONTRACTOR MAY SUBSTITUTE THE SECTION SHOWN IN DETAIL [D/MC.X10] FOR SMALL AREAS OF PAVEMENT REPLACEMENT
 2. SEAL COAT IS ONLY APPLIED TO NEW PAVEMENT WHEN IT IS ADJACENT TO EXISTING PAVEMENT THAT IS RECEIVING A SEAL COAT



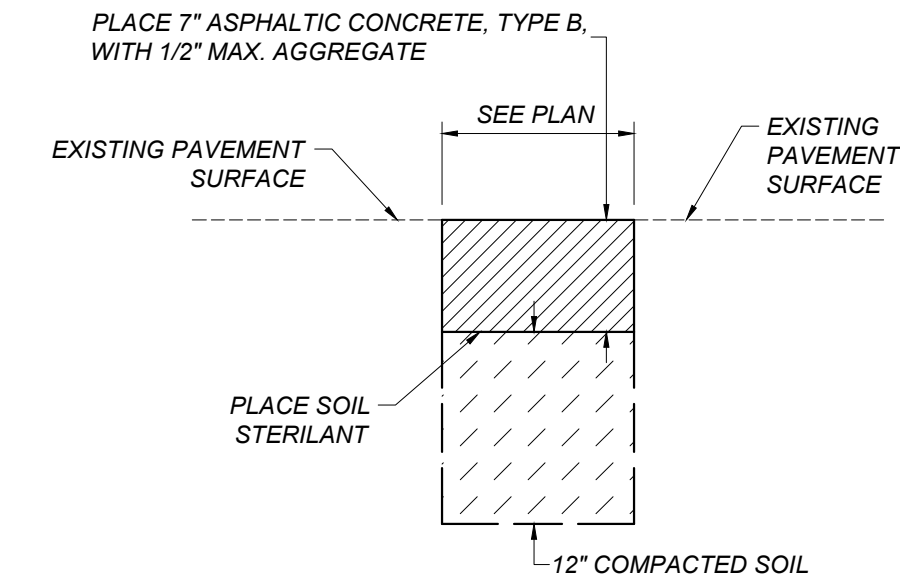
A ASPHALT CONCRETE PAVEMENT SECTION
 MC.X10 NOT TO SCALE



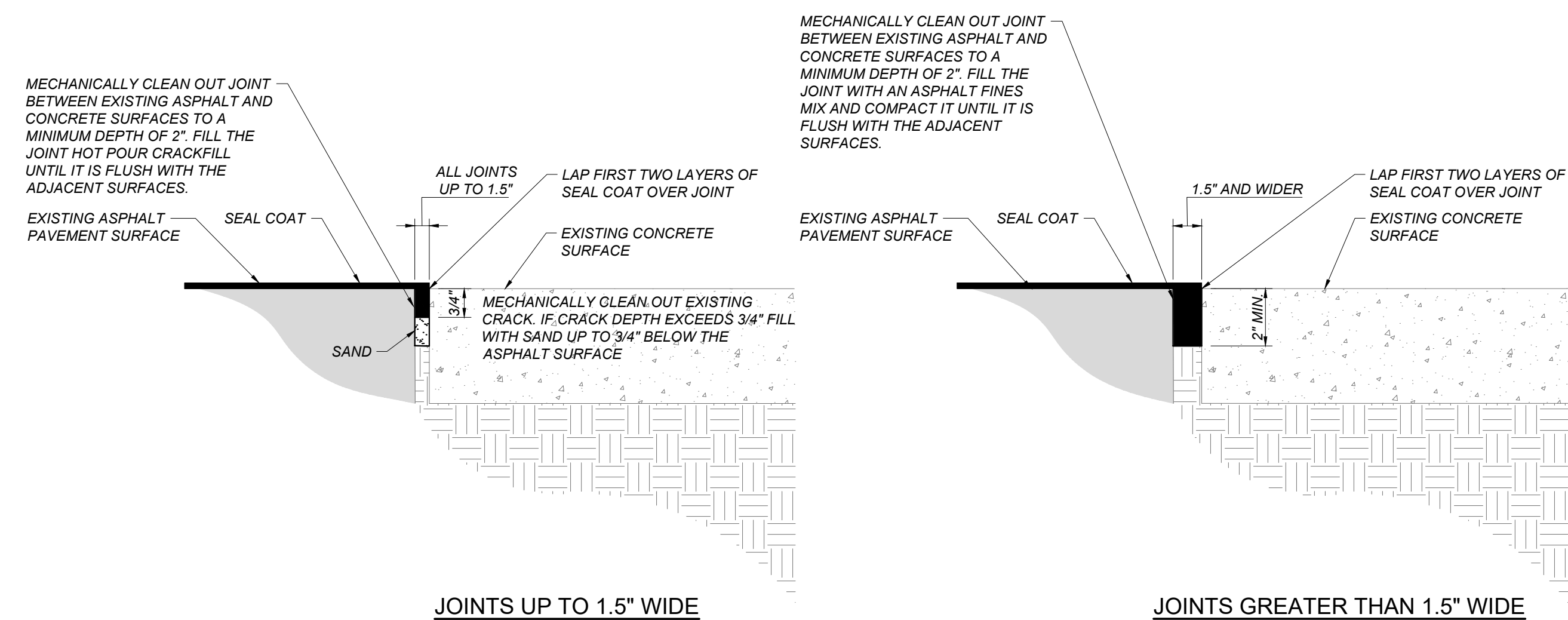
B ADJUST UTILITY LID
 MC.X10 NOT TO SCALE



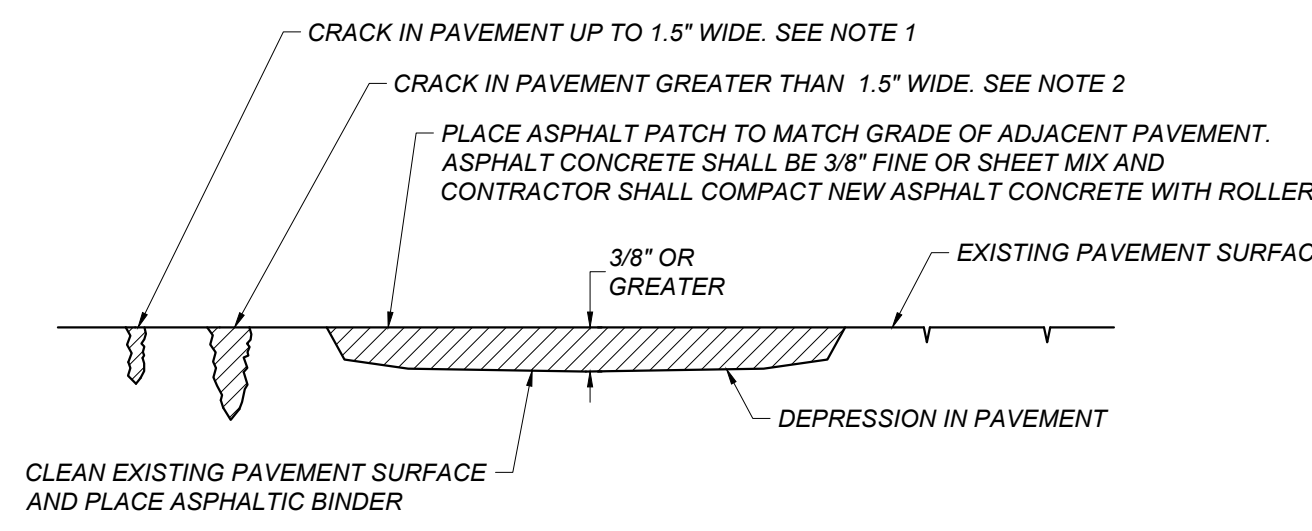
C DOWEL BAR DETAIL
 MC.X10 NOT TO SCALE



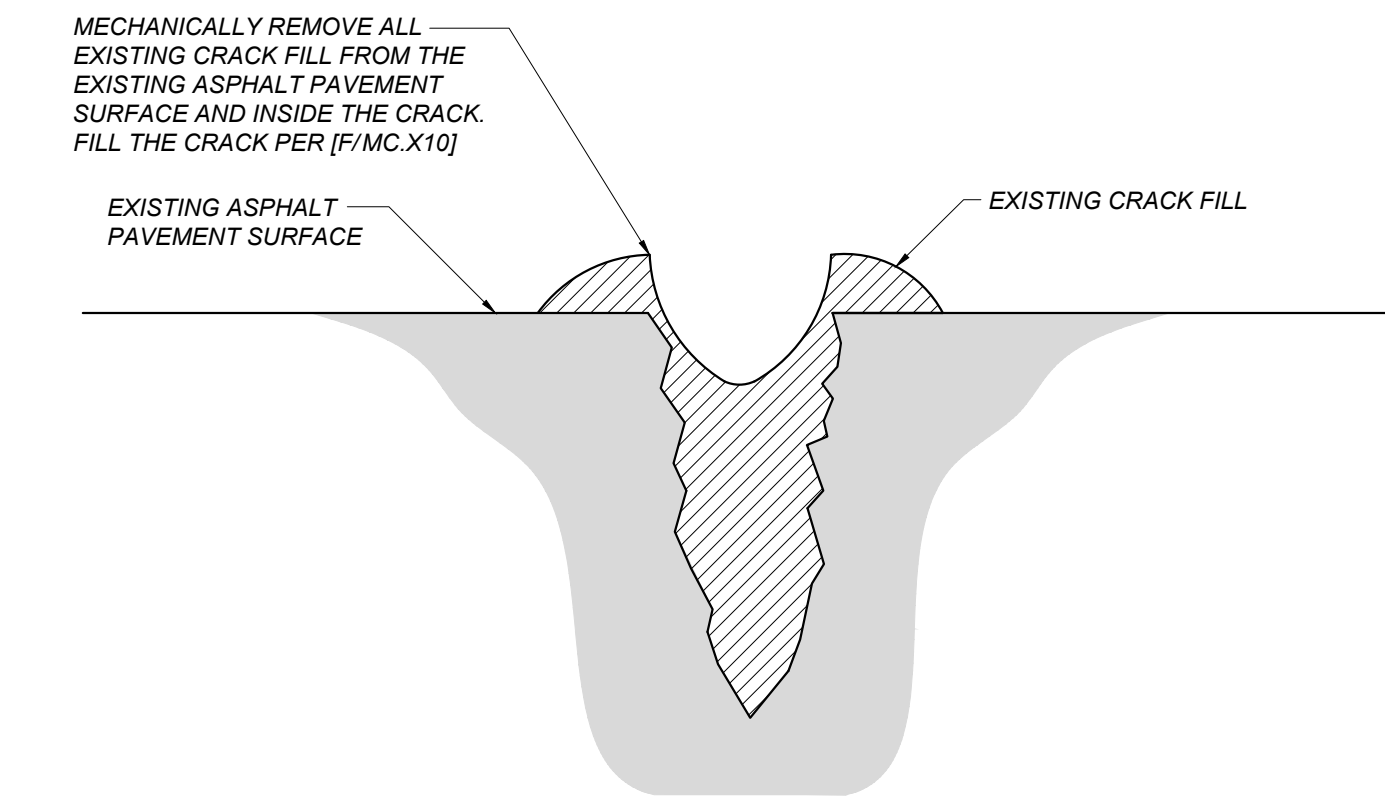
D ASPHALT CONCRETE PLUG
 MC.X10 NOT TO SCALE



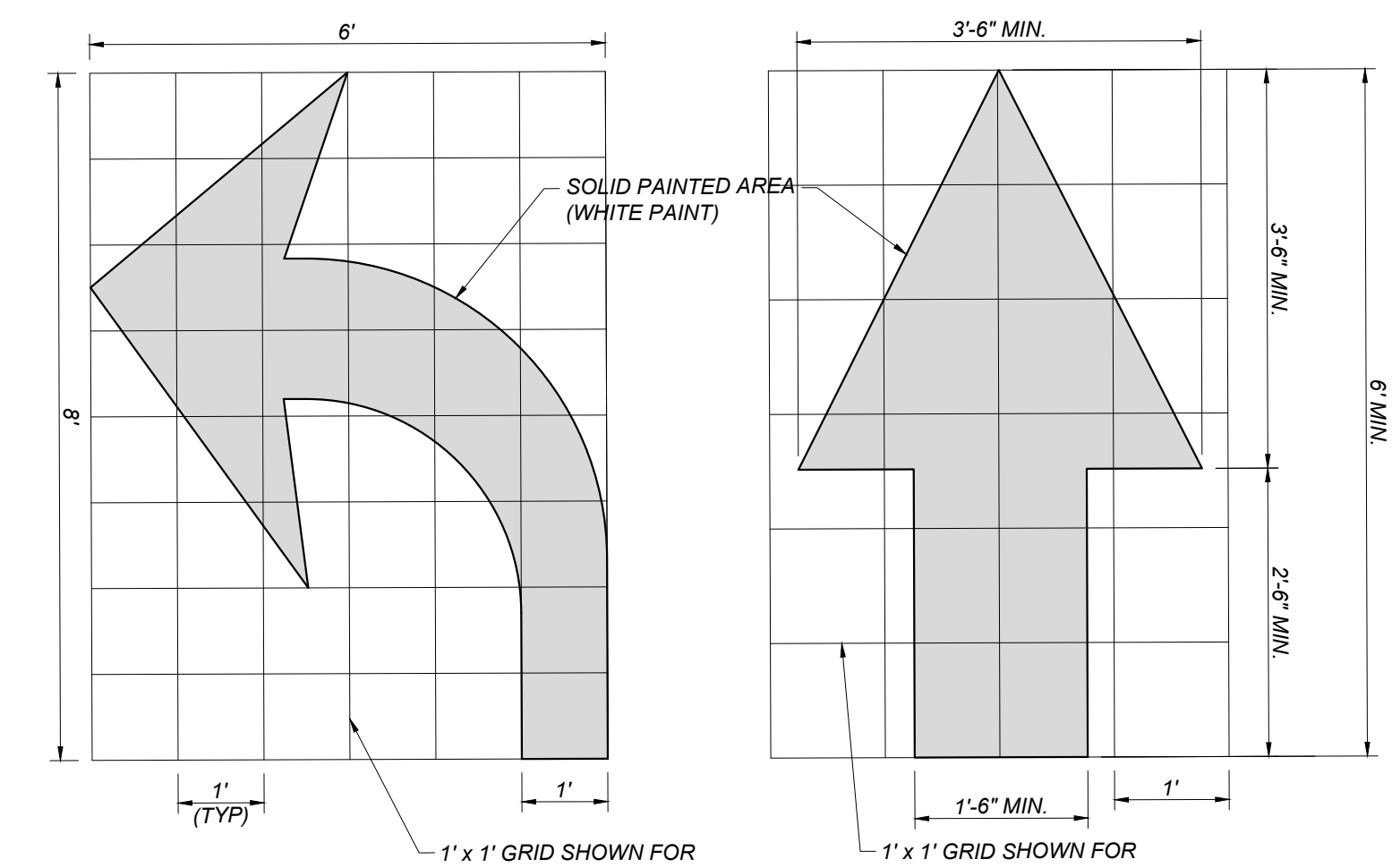
E ASPHALT EDGE CONDITION TREATMENT
 MC.X10 NOT TO SCALE



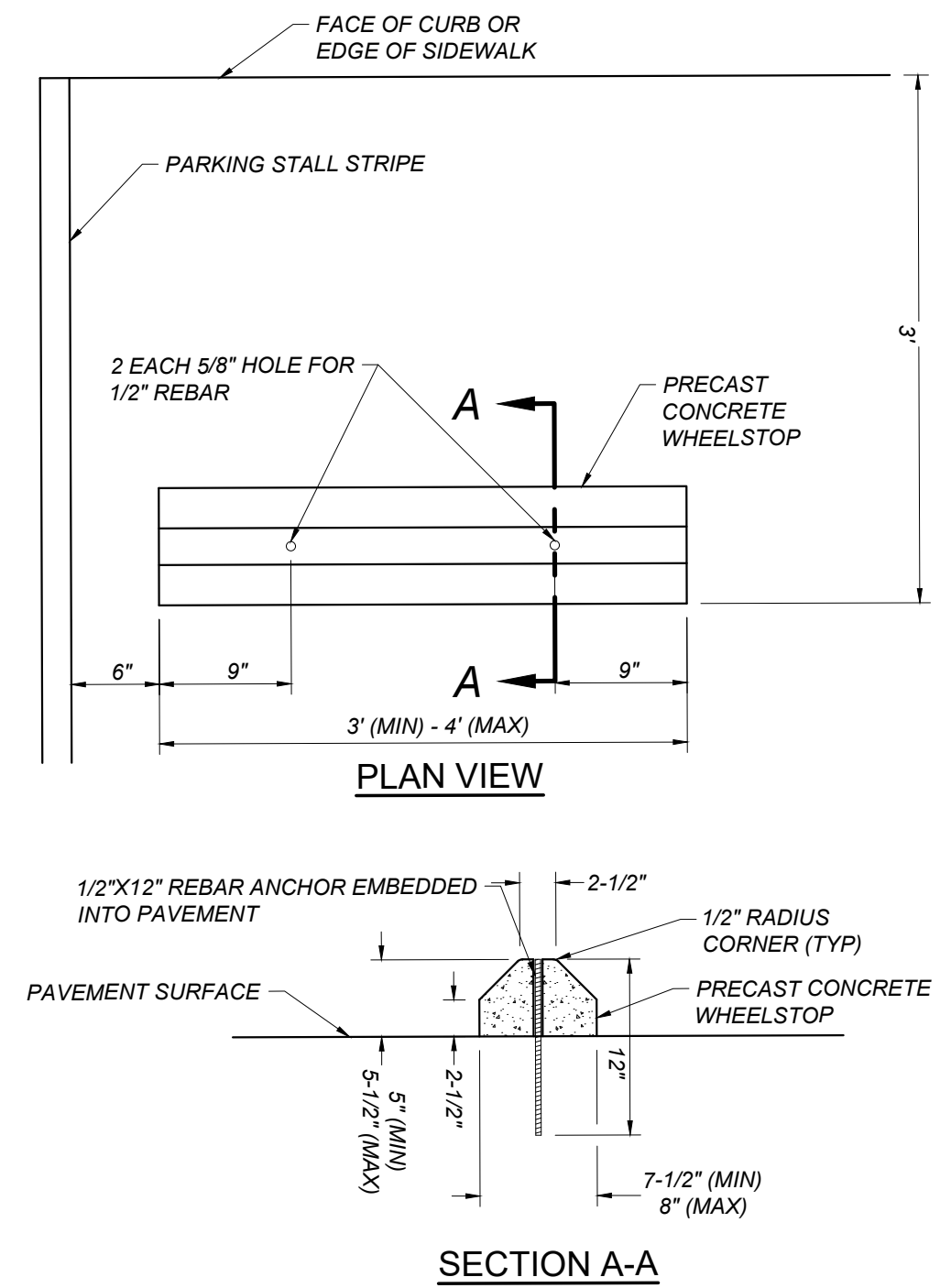
F CRACK PATCHING DETAIL
 MC.X10 NOT TO SCALE



G CRACK FILL CLEANING DETAIL
 MC.X10 NOT TO SCALE



H DIRECTIONAL ARROWS
 MC.X10 NOT TO SCALE



I DETAIL OF TYPICAL WHEELSTOP
 MC.X10 NOT TO SCALE

IDENTIFICATION STAMP
 DIV. OF THE STATE ARCHITECT
 APP: 02-121178 INC:
 REVIEWED FOR
 SS FLS ACS
 DATE: 03/16/2023
 FOR DSA USE ONLY
 DSA APP # 02-121178

 Blair, Church & Flynn Consulting Engineers 455 Clovis Avenue, Suite 500 Clovis, California 93612 Tel (559) 326-1400 Fax (559) 326-1500		CONSULTANT	REF. & REV.	CLOVIS UNIFIED SCHOOL DISTRICT 2023 PAVEMENT REHABILITATION VARIOUS SITES MICKEY COX ELEMENTARY DETAILS	CONST. DOCUMENTS
		DR. BY: AH	CH. BY: JF		DATE: 01/21/2023