

CLOVIS UNIFIED SCHOOL DISTRICT

EIMEAR O'BRIEN, ED. D., DISTRICT SUPERINTENDENT

2023 PLAYCOURT REHABILITATION IMPROVEMENTS AT CLOVIS NORTH HIGH SCHOOL

FOR DSA USE ONLY

GENERAL SITE NOTES:

THE REQUIREMENTS AND INFORMATION SET OUT BELOW ARE PROVIDED FOR THE CONTRACTOR'S CONVENIENCE AND DO NOT ENCOMPASS ALL PROJECT REQUIREMENTS DESCRIBED BY THE PROJECT PLANS AND SPECIFICATIONS AND/OR APPLICABLE LAWS, REGULATIONS AND/OR BUILDING CODES.

- CONSTRUCTION OF ALL PROJECT SITE IMPROVEMENTS SUBJECT TO ADA ACCESS COMPLIANCE, INCLUDING ACCESSIBLE PATH OF TRAVEL, CURB RETURNS, PARKING STALL(S) AND UNLOADING AREAS, BARRIER FREE AMENITIES AND/OR OTHER APPLICABLE SITE IMPROVEMENTS SHALL CONFORM TO THE AMERICANS WITH DISABILITIES ACT, CALIFORNIA TITLE 24, AND THE CALIFORNIA BUILDING CODE, CURRENT EDITION(S).
- CONTRACTOR SHALL FIELD VERIFY ALL GRADES AND SLOPES PRIOR TO THE PLACEMENT OF CONCRETE AND/OR PAVEMENT FOR CONFORMANCE WITH ADA ACCESS COMPLIANCE REQUIREMENTS. EXAMPLES OF MINIMUM AND MAXIMUM LIMITS RELATED TO ADA ACCESS COMPLIANCE INCLUDE, BUT ARE NOT LIMITED TO:
 - ACCESSIBLE PATH OF TRAVEL CROSS-SLOPE SHALL NOT EXCEED 2%
 - ACCESSIBLE PATH OF TRAVEL LONGITUDINAL SLOPES SHALL NOT EXCEED 5%
 - RAMP LONGITUDINAL SLOPES SHALL NOT EXCEED 8.33%
 - WALKS SHALL NOT HAVE LESS THAN 48 INCHES IN UNOBSTRUCTED WIDTH
 - ACCESSIBLE PARKING SPACES AND ACCESS AISLES SHALL NOT EXCEED 2% SLOPE IN ANY DIRECTION
 - LANDINGS AT THE TOP AND BOTTOM OF ACCESSIBLE RAMPS SHALL NOT EXCEED 2% SLOPE IN ANY DIRECTION
 - GUTTERS AND ROAD SURFACES DIRECTLY ADJACENT TO AND WITHIN 2 FEET OF A CURB RAMP SHALL HAVE A COUNTER SLOPE NOT TO EXCEED 5%
- CONTRACTOR MUST IMMEDIATELY NOTIFY THE ENGINEER OF RECORD, IDENTIFIED BY THE PROFESSIONAL ENGINEERING SEAL AND SIGNATURE ON THESE PLANS, OF ANY SITE CONDITION(S) AND/OR DESIGN INFORMATION THAT PREVENTS THE CONTRACTOR FROM COMPLYING WITH THE LAWS, REGULATIONS AND/OR BUILDING CODES GOVERNING ADA ACCESS COMPLIANCE.
- DRAINAGE SHALL NOT BE ALLOWED ONTO ADJACENT PROPERTY.
- ALL FILL MATERIAL USED SHALL BE PLACED IN COMPLIANCE WITH THE PROJECT SPECIFICATIONS. A SOILS COMPACTION REPORT SHALL BE SUBMITTED TO THE ENGINEER OF RECORD AS REQUIRED BY THE PROJECT SPECIFICATIONS.
- THE CONTRACTOR SHALL IMPLEMENT DUST CONTROL MEASURES AS REQUIRED BY THE PROJECT SPECIFICATIONS, AND BY GOVERNING PUBLIC AGENCIES.
- THE CONTRACTOR SHALL LOCATE ALL EXISTING UTILITIES PRIOR TO START OF ANY WORK.
- CONTRACTOR SHALL NOTIFY THE SCHOOL DISTRICT TO TURN OFF IRRIGATION A MINIMUM OF 2 DAYS PRIOR TO STARTING WORK. CONTRACTOR SHALL COORDINATE WITH THE SCHOOL DISTRICT THROUGHOUT THE COURSE OF THE PROJECT FOR WATERING AND NON-WATERING TIMES. CONTRACTOR SHALL NOTIFY THE DISTRICT AS SOON AS WORK IS COMPLETED TO THE POINT WHERE IRRIGATION SYSTEMS MAY BE TURNED BACK ON.
- ENSURE THAT ALL EXISTING STRIPING IS NOT VISIBLE AFTER APPLYING SEAL COAT AND PRIOR TO RESTRIPING AND REPAINTING. OTHERWISE, ADDITIONAL SEAL COAT APPLICATION MAY BE REQUIRED.
- PRIOR TO ACCEPTANCE OF NEW PAVING AND APPLICATION OF SEAL COAT AND/OR STRIPING, THE CONTRACTOR SHALL COMPLETE A WATER TEST OF THE NEW PAVEMENT WITH THE ENGINEER OF RECORD PRESENT TO VERIFY THAT NO LOW SPOTS OR "BIRD BATHS" ARE PRESENT, PER THE PROJECT SPECIFICATIONS.
- LAYOUT ALL PAVEMENT MARKINGS TO MATCH EXISTING UNLESS NOTED OTHERWISE ON PLANS.
- PAINT ALL CURBS AND WHEELSTOPS TO MATCH EXISTING WITHIN PROJECT LIMITS, UNLESS SHOWN OTHERWISE ON THE PLANS.
- ALL CONCRETE SHALL HAVE WEAKENED PLANE JOINTS AT 10 FEET OR LESS ON CENTER AND ONE HALF INCH PREMOLDED EXPANSION JOINTS AT 30 FEET OR LESS MINIMUM. MATCH EXISTING SCORE PATTERN DIMENSIONS ON ALL CONCRETE WALKS AND PAVEMENT.
- NO CONCRETE MAY BE POURED UNTIL ALL FORMS AND REINFORCEMENTS HAVE BEEN REVIEWED AND APPROVED BY THE PROJECT INSPECTOR.
- REPLACE ALL DAMAGED TURF AND IRRIGATION FACILITIES RESULTING FROM THE WORK REQUIRED.
- ADJUST ALL UTILITY LIDS TO FINISHED GRADE WITHIN CONSTRUCTION AREA PER DETAIL [E/CN.X10] UNLESS NOTED OTHERWISE. REMOVE AND REPLACE ALL BROKEN OR DAMAGED LIDS AND BOXES. ALL LIDS WITHIN TRAFFIC AREAS SHALL BE TRAFFIC RATED.
- ANY EXISTING UTILITIES AND/OR IMPROVEMENTS WHICH ARE TO REMAIN, THAT BECOME DAMAGED DURING CONSTRUCTION SHALL BE COMPLETELY RESTORED TO THE SATISFACTION OF THE OWNER AND AGENCY HAVING AUTHORITY, AT THE CONTRACTOR'S SOLE EXPENSE.
- ANY EXISTING UTILITIES AND/OR IMPROVEMENTS THAT BECOME DAMAGED DURING CONSTRUCTION SHALL BE COMPLETELY RESTORED TO THE SATISFACTION OF THE OWNER AND AGENCY HAVING AUTHORITY, AT THE CONTRACTOR'S SOLE EXPENSE.
- CONTRACTOR TO MATCH EXISTING PAVEMENT GRADE AT ALL NEW PAVEMENT LOCATIONS UNLESS NOTED OTHERWISE ON THE PLANS.
- ASPHALT CONCRETE REMOVAL AND REPLACEMENT LIMITS SHOWN ARE APPROXIMATE AND ARE BASED ON PAVEMENT CONDITIONS OBSERVED DURING A PRE-DESIGN SITE REVIEW. ADJUST LOCATIONS AND LIMITS AS REQUIRED BY ACTUAL FIELD CONDITIONS OR AS DIRECTED BY THE ENGINEER.
- INSTALL DOWELED CONNECTION AT JOINT OF NEW CONCRETE TO EXISTING CONCRETE PER DETAIL [F/CN.X10]
- TREAT ALL JOINTS BETWEEN EXISTING ASPHALT AND CONCRETE SURFACES PER DETAIL [C/CN.X20]

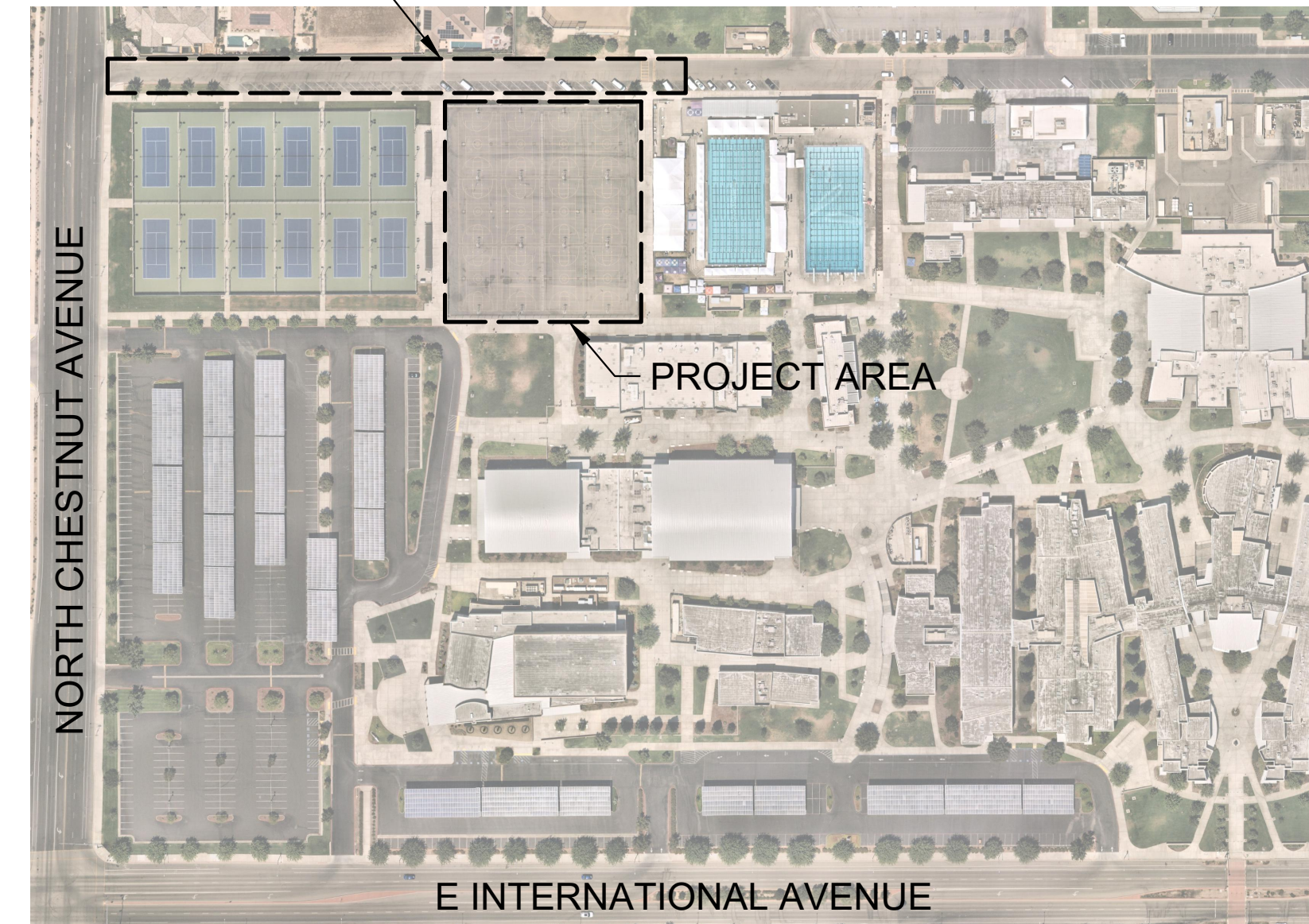
GENERAL NOTES:

- ALL WORK SHALL BE DONE IN ACCORDANCE WITH THESE CONSTRUCTION DRAWINGS, THE CONTRACT SPECIFICATIONS AND, WHERE APPLICABLE, THE CITY STANDARDS AND THE STATE OF CALIFORNIA STANDARD SPECIFICATIONS.
- THE CONTRACTOR SHALL COORDINATE ALL CONSTRUCTION ACTIVITIES WITH THE SCHOOL DISTRICT'S USE OF THE FACILITIES AND OTHER CONTRACTORS WHO MAY BE DOING CONSTRUCTION WITHIN THE PROJECT SITE.
- THE CONTRACTOR SHALL CONTACT DISTRICT OFFICIALS FOR DETERMINATION OF DEPTH AND LOCATION OF UNDERGROUND UTILITIES PRIOR TO EXCAVATION IN THE PROJECT SITE.
- BEFORE COMMENCING WORK, THE CONTRACTOR SHALL NOTIFY ALL UTILITY AUTHORITIES OR UTILITY COMPANIES HAVING POSSIBLE INTEREST IN THE WORK OF THE CONTRACTOR'S INTENTION TO EXCAVATE PROXIMATE TO EXISTING FACILITIES AND THE CONTRACTOR SHALL VERIFY THE LOCATION OF ANY UTILITIES IN THE WORK AREA, NOTIFY U.S.A. AT 1(800) 642-2444, TWO (2) DAYS PRIOR TO EXCAVATION.
- ALL CONSTRUCTION SHALL CONFORM TO THE REQUIREMENTS OF THE 2016 CALIFORNIA BUILDING CODE (CBC).
- CHANGE TO THE APPROVED DRAWINGS AND SPECIFICATIONS SHALL BE MADE BY ADDENDA OR CONSTRUCTION CHANGE DOCUMENT (CCD) APPROVED BY DSA, AS REQUIRED BY SECTION 4-338, PART 1, TITLE 24, CCR.
- A "DSA CERTIFIED" CLASS 3 PROJECT INSPECTOR EMPLOYED BY THE DISTRICT (OWNER) AND APPROVED BY DSA SHALL PROVIDE CONTINUOUS INSPECTION OF THE WORK. THE DUTIES OF THE INSPECTOR ARE DEFINED IN SECTION 4-342, PART 1, TITLE 24, CCR.
- A DSA ACCEPTED TESTING LABORATORY DIRECTLY EMPLOYED BY THE DISTRICT (OWNER) SHALL CONDUCT ALL THE REQUIRED TESTS AND INSPECTIONS FOR THE PROJECT.
- THE INTENT OF THESE DRAWINGS AND SPECIFICATIONS IS THAT THE WORK OF THE ALTERATION, REHABILITATION OR RECONSTRUCTION SHALL BE IN ACCORDANCE WITH TITLE 24, CCR. SHOULD ANY EXISTING CONDITIONS SUCH AS DETERIORATION OR NON-COMPLYING CONSTRUCTION BE DISCOVERED WHICH IS NOT COVERED BY THE CONTRACT DOCUMENTS WHEREIN THE FINISHED WORK WILL NOT COMPLY WITH TITLE 24, CCR, A CONSTRUCTION CHANGE DOCUMENT (CCD), OR A SEPARATE SET OF PLANS AND SPECIFICATIONS, DETAILING AND SPECIFYING THE REQUIRED WORK SHALL BE SUBMITTED TO AND APPROVED BY DSA BEFORE PROCEEDING WITH THE WORK (SECTION 4-317(C), PART 1, TITLE 24, CCR).
- GRADING PLANS, DRAINAGE IMPROVEMENTS, ROAD AND EMERGENCY ACCESS REQUIREMENTS AND ENVIRONMENTAL HEALTH CONSIDERATIONS SHALL COMPLY WITH ALL LOCAL ORDINANCES.

GENERAL DEMOLITION NOTES:

- THE "LIMIT OF DEMOLITION" SHOWN IS APPROXIMATE AND IS GENERALLY CONSIDERED TO BE THE MINIMUM REMOVAL REQUIREMENTS. CONTRACTOR MUST COORDINATE AS NOTED IN THE LEGEND.
- CONTRACTOR SHALL LEGALLY DISPOSE OF ALL DEMOLISHED MATERIALS OFF SITE.
- CONTRACTOR SHALL PROTECT ALL EXISTING UTILITY IMPROVEMENTS NOT SPECIFICALLY DESIGNATED FOR REMOVAL.
- THE ON-SITE UNDERGROUND UTILITIES SHOWN ON THIS SHEET ARE AT APPROXIMATE LOCATIONS. THE EXTENT, LOCATIONS AND SIZES ARE UNKNOWN. THE CONTRACTOR SHALL POT-HOLE TO LOCATE AND VERIFY THE UNDERGROUND UTILITY LINES PRIOR TO REMOVAL.
- CONTRACTOR TO PROTECT AND PRESERVE IN PLACE ANY FOUND SURVEY MONUMENTS. ANY MONUMENTS DISTURBED SHALL BE RESET BY A CALIFORNIA LICENSED SURVEYOR AND THE APPROPRIATE PAPERWORK FILED WITH THE CITY OR COUNTY, AT CONTRACTOR'S EXPENSE.
- ALL HAZARDOUS MATERIALS ENCOUNTERED DURING SITE DEMOLITION SHALL BE REMEDIATED AND DISPOSED OF PER STATE AND EPA REQUIREMENTS.
- REMOVE EXISTING IMPROVEMENTS AS NECESSARY TO CONSTRUCT NEW IMPROVEMENTS SHOWN ON THESE PLANS.
 - FOR CONCRETE REMOVAL, REMOVE TO THE NEXT NEAREST TOOLED JOINT OR EXPANSION JOINT OF IMPROVEMENTS DESIGNATED TO REMAIN.
 - FOR ASPHALTIC PAVEMENT REMOVAL, SAWCUT TO A STRAIGHT, CLEAN EDGE AT LOCATIONS INDICATED ON THE PLANS.

PROJECT AREA



SITE MAP

NOT TO SCALE

SITE ADDRESS

2770 E INTERNATIONAL AVE
FRESNO, CA 93730

PROJECT CONTACTS:

OWNER: CLOVIS UNIFIED SCHOOL DISTRICT
1450 HERNDON AVE
CLOVIS, CA 93611
PHONE: (559) 327-9000

CIVIL ENGINEER: BLAIR, CHURCH & FLYNN
CONSULTING ENGINEERS
451 CLOVIS AVE., SUITE 200
CLOVIS, CA 93612
PHONE: (559) 326-1400

SCOPE OF WORK:

- PARTIAL ASPHALT PAVEMENT REMOVAL AND REPLACEMENT, CRACKFILL, SEAL COAT, AND RE-STRIPE EXISTING ACCESS ROAD.
- CRACKFILL, SEAL COAT AND RE-STRIPE EXISTING PLAYCOURT

APPLICABLE CODES:

2022 CALIFORNIA ADMIN. CODE, TITLE 24, PART 1, CCR
2022 CALIFORNIA BUILDING CODE, TITLE 24, PART 2, CCR

TABLE OF CONTENTS	
SHEET NUMBER	SHEET TITLE
CN.C00	COVER SHEET
CN.C30	SITE PLAN
CN.C31	SITE PLAN
CN.X10	DETAILS
CN.X20	DETAILS
TOTAL SHEET COUNT: 5	



Know what's below.
Call before you dig.



CONSULTANT	REF. & REV.	CLOVIS UNIFIED SCHOOL DISTRICT	
Blair, Church & Flynn Consulting Engineers 451 Clovis Avenue, Suite 200 Clovis, California 93612 Tel (559) 326-1400 Fax (559) 326-1500		2023 PAVEMENT REHABILITATION VARIOUS SITES CLOVIS NORTH HIGH SCHOOL COVER SHEET	CONST. DOCUMENTS CN.C00
		DR. BY: AH	DATE: 01/21/2023
		CH. BY: JF	SCALE AS NOTED

Blair, Church & Flynn Consulting Engineers, Inc. 01/21/2023 10:58:00 AM C:\Users\jflynn\OneDrive\Documents\2023\2023-2024\CN.C00\2023-2024\CN.C00.dwg CLOVIS SHEET - R2.dwg

NORTH CHESTNUT AVENUE

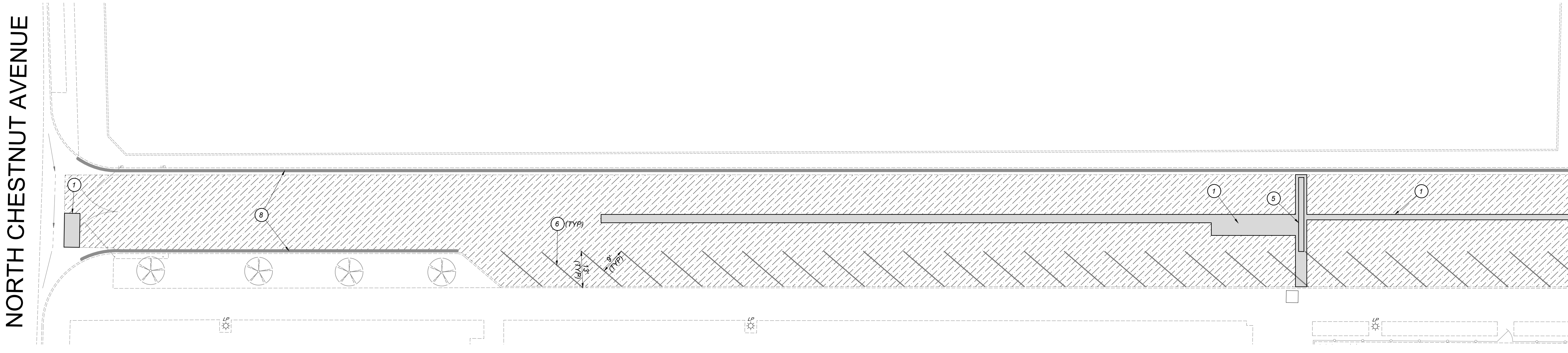
SEE BOTTOM LEFT FOR CONTINUATION

TYPICAL CONSTRUCTION LEGEND:

- DETAIL DESIGNATION
DETAIL REFERENCE
SHEET LOCATION
- [A/CNX-1] [DETAIL DESIGNATION / SHEET LOCATION]
- LIMITS OF ASPHALTIC CONCRETE PAVEMENT
STRUCTURAL SECTION REMOVAL AND REPLACEMENT
PER [A/CN.X10]
- CRACKFILL PER [C/CN.X10] AND APPLY SEAL COAT PER
THE PROJECT SPECIFICATIONS
- LIMITS OF PAINTED CURB

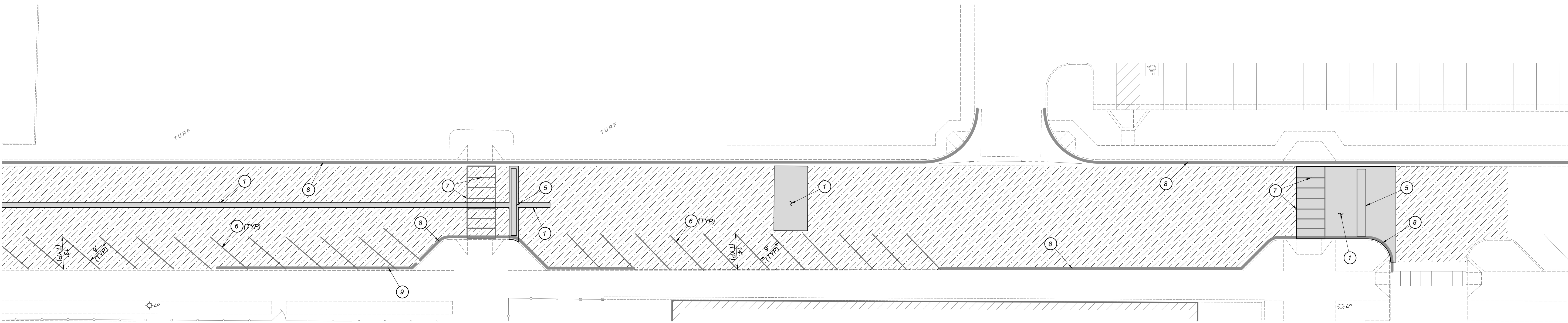
TYPICAL CONSTRUCTION KEYNOTES:

- ① NEATLY SAW CUT, REMOVE AND REPLACE EXISTING ASPHALT PAVEMENT STRUCTURAL SECTION
- ② PAINT BASKETBALL COURT TO MATCH EXISTING. CENTER COURT ON EXISTING POST. SEE [A/CN.X20] FOR TYPICAL COURT ELEMENTS AND LAYOUT.
- ③ PAINT VOLLEYBALL COURT TO MATCH EXISTING. CENTER COURT ON EXISTING POST. SEE [B/CN.X20] FOR TYPICAL COURT ELEMENTS AND LAYOUT.
- ④ PAINT TO MATCH EXISTING STRIPING
- ⑤ SPEED BUMP PER [G/CN.X10]
- ⑥ PAINT 4" WIDE WHITE STRIPE
- ⑦ PAINT 12" WIDE YELLOW STRIPE TO MATCH EXISTING
- ⑧ PAINT TOP AND FACE OF CURB RED WITH 4" HIGH WHITE LETTERING, "NO PARKING - FIRE LANE" AT 30' MAX. ON CENTER
- ⑨ PAINT 18" YELLOW STRIPE ON THE FACE OF CURB WITH 4" HIGH WHITE LETTERING, "STAFF" AT THE CENTER OF THE STALL

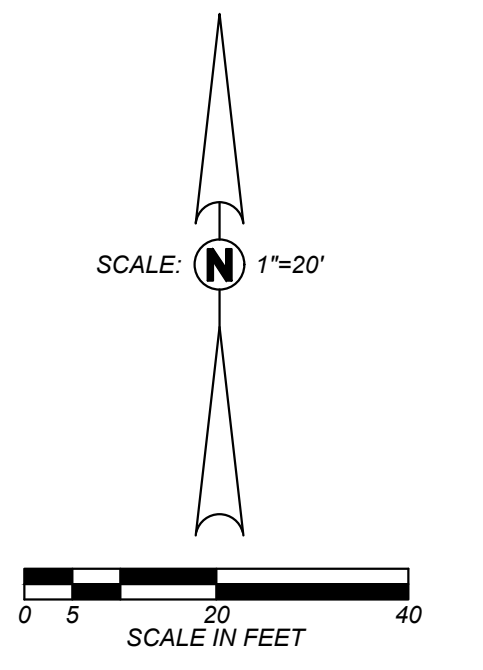


A ACCESS ROAD ENLARGED SITE PLAN
CN.C30

SEE TOP RIGHT FOR CONTINUATION



B ACCESS ROAD ENLARGED SITE PLAN
CN.C30



Blair, Church & Flynn
CONSULTING ENGINEERS

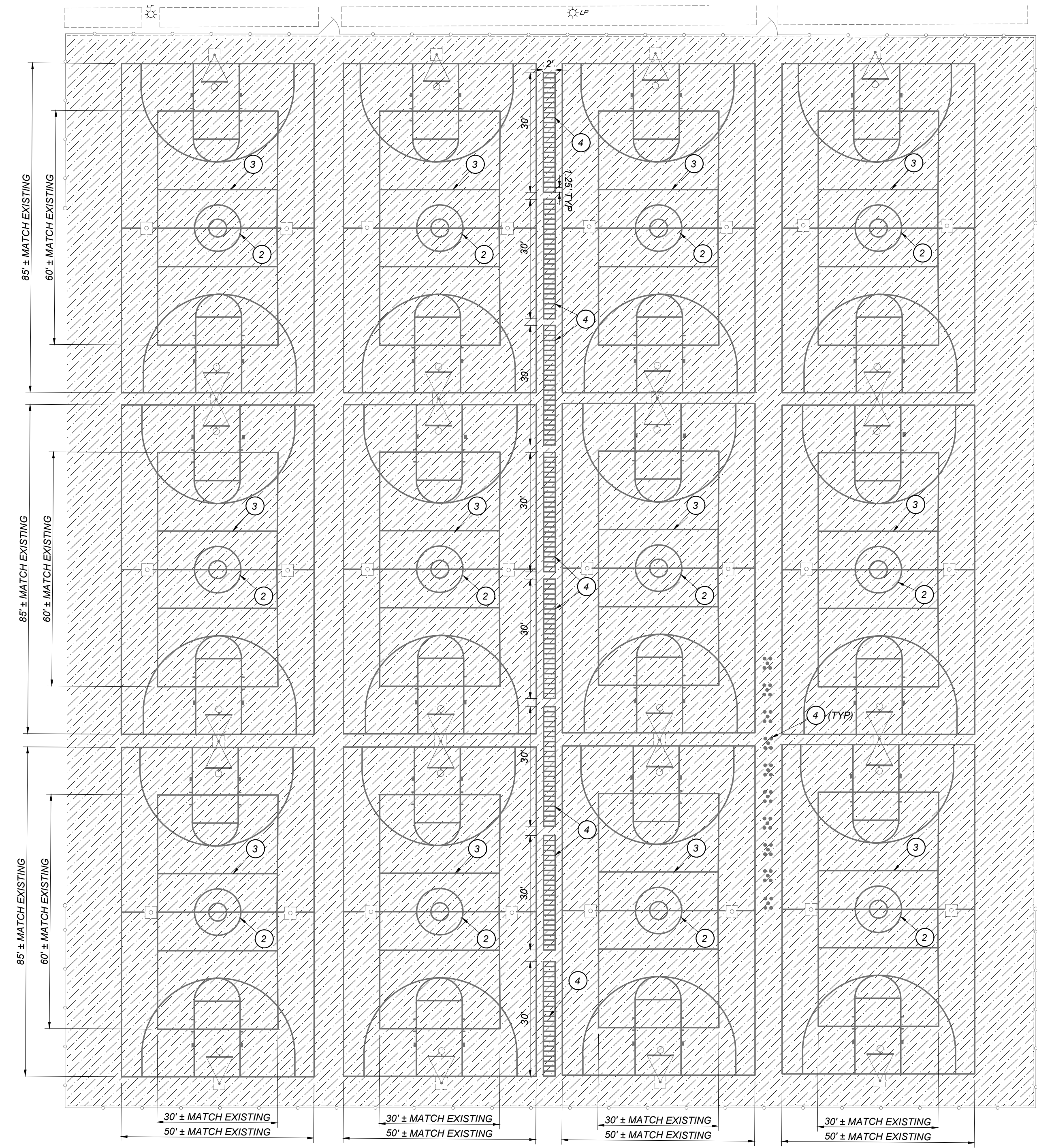
REGISTERED PROFESSIONAL ENGINEER
CITY OF CALIFORNIA
PLAN REVIEW ONLY
NOT FOR CONSTRUCTION

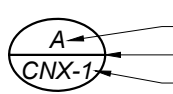
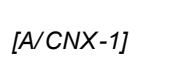
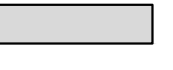


CONSULTANT	REF. & REV.
Blair, Church & Flynn Consulting Engineers 455 Clovis Avenue, Suite 200 Clovis, California 93612 Tel (559) 326-1400 Fax (559) 326-1500	

CLOVIS UNIFIED SCHOOL DISTRICT	
2023 PAVEMENT REHABILITATION VARIOUS SITES CLOVIS NORTH HIGH SCHOOL SITE PLAN	

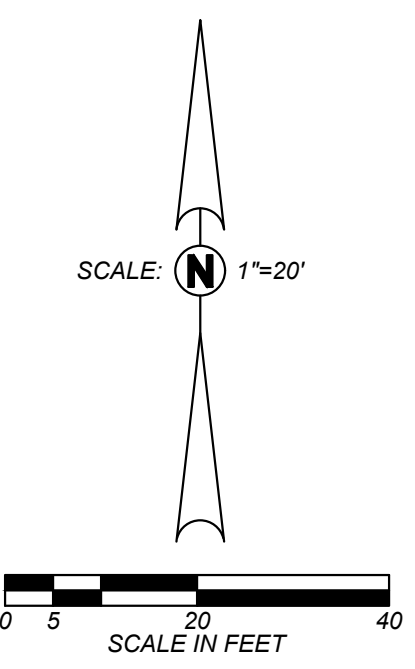
CONST. DOCUMENTS	
DR. BY: AH	CN.C30
CH. BY:	
DATE: 01/21/2023 SCALE AS NOTED	

Drawing: P:\2023\01\Blair_Church_Flynn\Projects\Clovis Unified School District\2023\2023_Clovis North High School_Site Plan.dwg, DATE: 01/21/2023, PLOT BY: [Name], PLOT DATE: 01/21/2023, PLOT SCALE: 1"=20'



- TYPICAL CONSTRUCTION LEGEND:**
-  DETAIL DESIGNATION
DETAIL REFERENCE
SHEET LOCATION
 -  [A/CNX-1] [DETAIL DESIGNATION / SHEET LOCATION]
 -  LIMITS OF ASPHALTIC CONCRETE PAVEMENT
STRUCTURAL SECTION REMOVAL AND REPLACEMENT
PER [A/CN.X10]
 -  CRACKFILL PER [C/CN.X10] AND APPLY SEAL COAT PER
THE PROJECT SPECIFICATIONS
 -  LIMITS OF PAINTED CURB

- TYPICAL CONSTRUCTION KEYNOTES:**
- 1 NEATLY SAW CUT, REMOVE AND REPLACE EXISTING ASPHALT PAVEMENT STRUCTURAL SECTION
 - 2 PAINT BASKETBALL COURT TO MATCH EXISTING. CENTER COURT ON EXISTING POST. SEE [A/CN.X20] FOR TYPICAL COURT ELEMENTS AND LAYOUT.
 - 3 PAINT VOLLEYBALL COURT TO MATCH EXISTING. CENTER COURT ON EXISTING POST. SEE [B/CN.X20] FOR TYPICAL COURT ELEMENTS AND LAYOUT.
 - 4 PAINT TO MATCH EXISTING STRIPING
 - 5 SPEED BUMP PER [G/CN.X10]
 - 6 PAINT 4" WIDE WHITE STRIPE
 - 7 PAINT 12" WIDE YELLOW STRIPE TO MATCH EXISTING
 - 8 PAINT TOP AND FACE OF CURB RED WITH 4" HIGH WHITE LETTERING, "NO PARKING - FIRE LANE" AT 30" MAX. ON CENTER
 - 9 PAINT 18" YELLOW STRIPE ON THE FACE OF CURB WITH 4" HIGH WHITE LETTERING, "STAFF" AT THE CENTER OF THE STALL



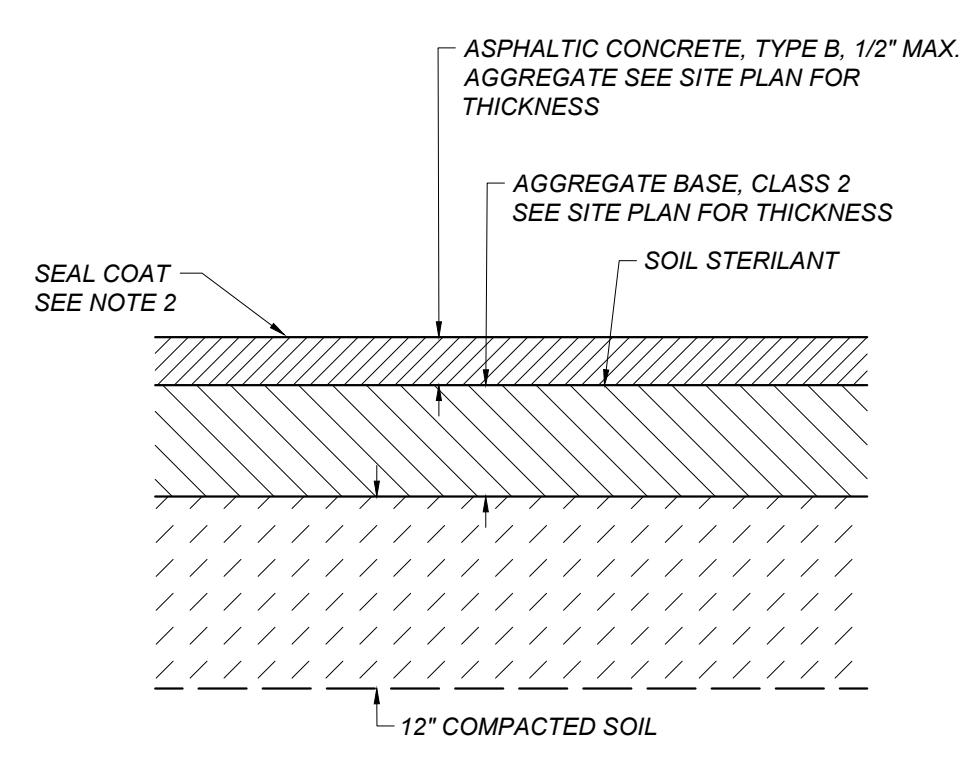
A PLAYCOURT ENLARGED SITE PLAN
CN.C31



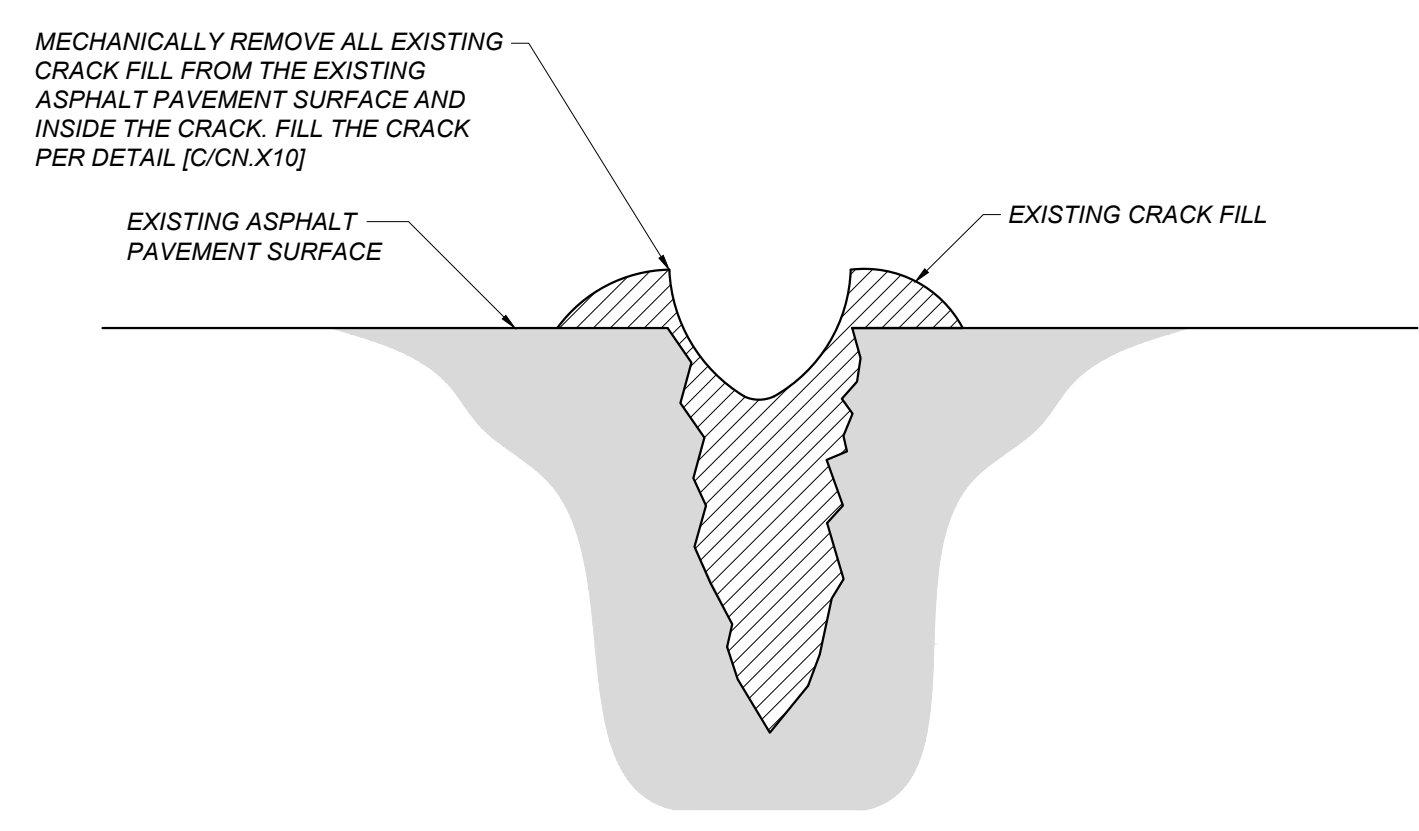
CONSULTANT Blair, Church & Flynn Consulting Engineers 455. Clovis Avenue, Suite 500 Clovis, California 93612 Tel (559) 326-1400 Fax (559) 326-1500	REF. & REV.	CLOVIS UNIFIED SCHOOL DISTRICT	
		2023 PAVEMENT REHABILITATION VARIOUS SITES CLOVIS NORTH HIGH SCHOOL SITE PLAN	
	CONST. DOCUMENTS	DR. BY: AH	CN.C31
		CH. BY: JF DATE: 01/21/2023 SCALE AS NOTED	

Drawing: P:\2023\01\20230121_ClovisNorthHighSchool_PavementRehabilitation_VariousSites_ClovisNorthHighSchool_SitePlan.dwg, 01/21/2023, 8:52 AM
 Plot by: armpf@bcf.com, 01/21/2023, 8:52 AM

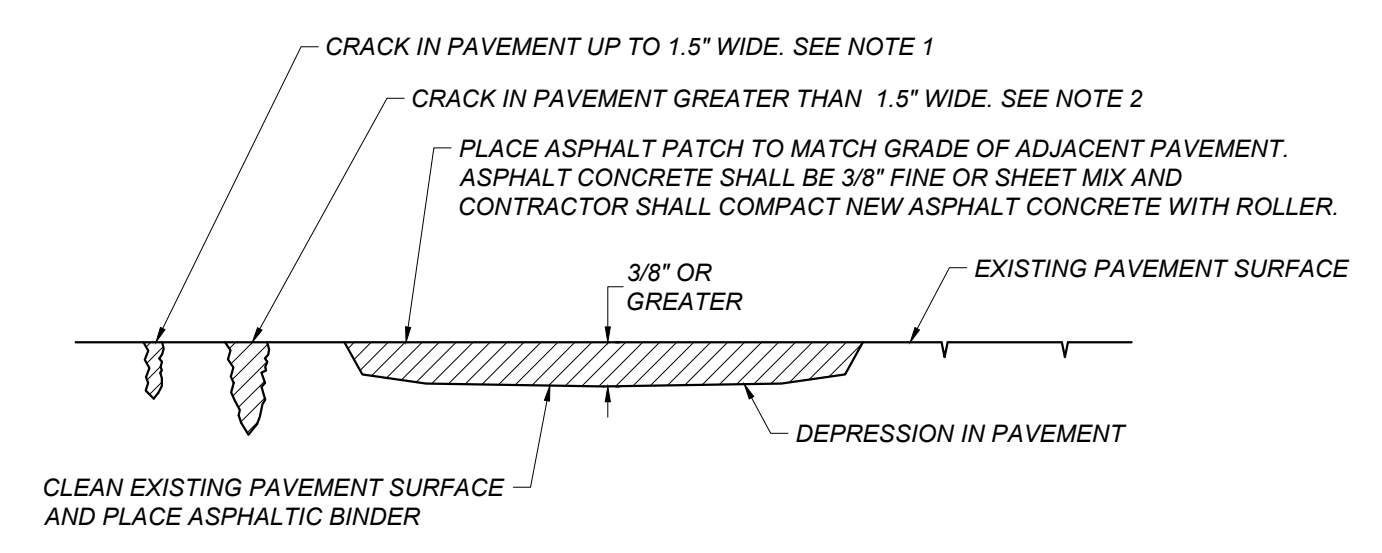
- NOTES:**
1. CONTRACTOR MAY SUBSTITUTE THE SECTION SHOWN IN DETAIL [D/CN.X10] FOR SMALL AREAS OF PAVEMENT REPLACEMENT
 2. SEAL COAT IS ONLY APPLIED TO NEW PAVEMENT WHEN IT IS ADJACENT TO EXISTING PAVEMENT THAT IS RECEIVING A SEAL COAT



A ASPHALT CONCRETE PAVEMENT SECTION
CN.X10 NOT TO SCALE

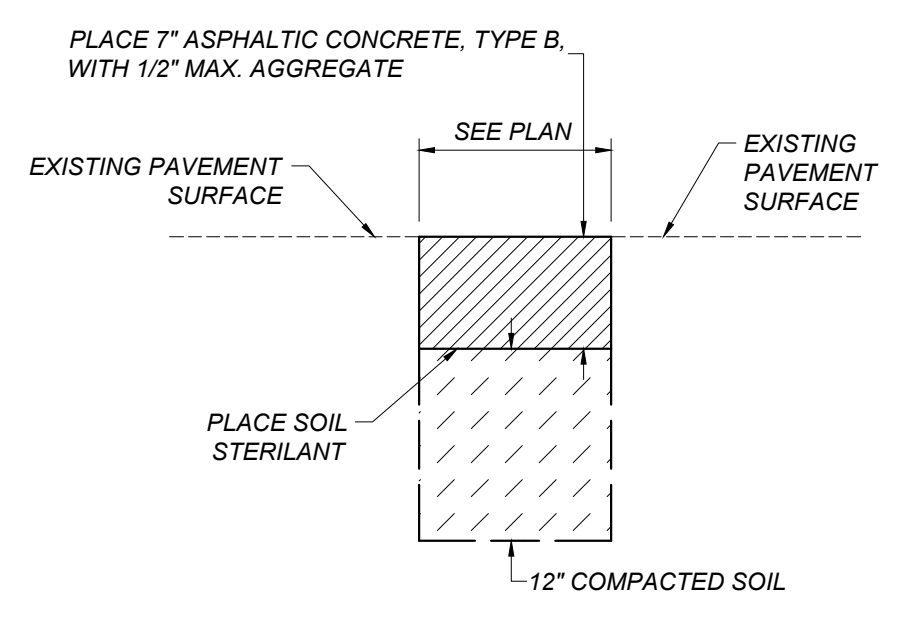


B CRACK FILL CLEANING DETAIL
CN.X10 NOT TO SCALE

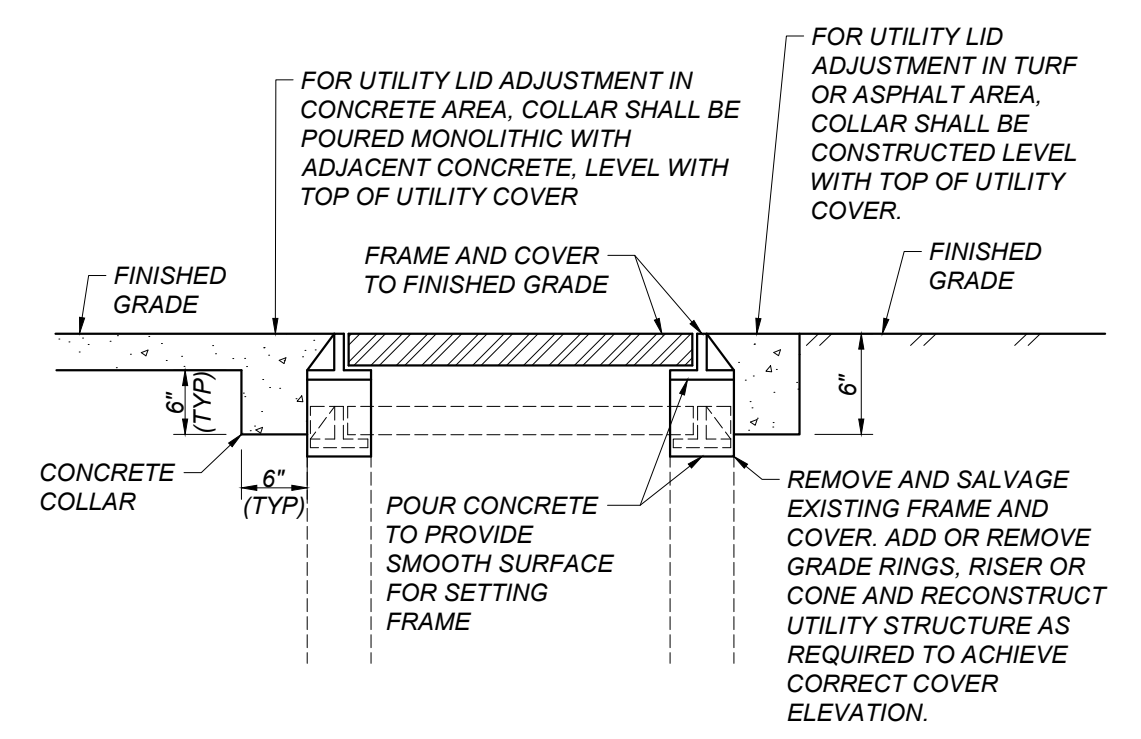


- NOTES:**
1. FOR CRACKS UP TO 1.5" IN WIDTH, MECHANICALLY CLEAN OUT EXISTING CRACK. IF CRACK DEPTH EXCEEDS 3/4" FILL WITH SAND UP TO 3/4" BELOW THE ASPHALT SURFACE AND FILL WITH HOT POUR CRACK FILL IN ACCORDANCE WITH THE PROJECT SPECIFICATIONS AND THE MANUFACTURER'S RECOMANDATIOS. CRACKFILL SHALL BE APPLIED UNTIL IT SETTLES FLUSH WITH ADJACENT PAVEMENT SURFACES.
 2. FOR CRACKS GREATER THAN 1.5" IN WIDTH, MECHANICALLY CLEAN CRACK TO A MINIMUM DEPTH OF 2". FILL THE CRACK AN ASPHALT FINES MIX AND COMPACT IT UNTIL IT IS FLUSH WITH THE EXISTING ASPHALT SURFACE PRIOR TO SEAL COAT APPLICATION.
 3. FOR CRACKS WITH EXISTING CRACK FILL, CLEAN CRACK PER DETAIL [B/CN.X10]

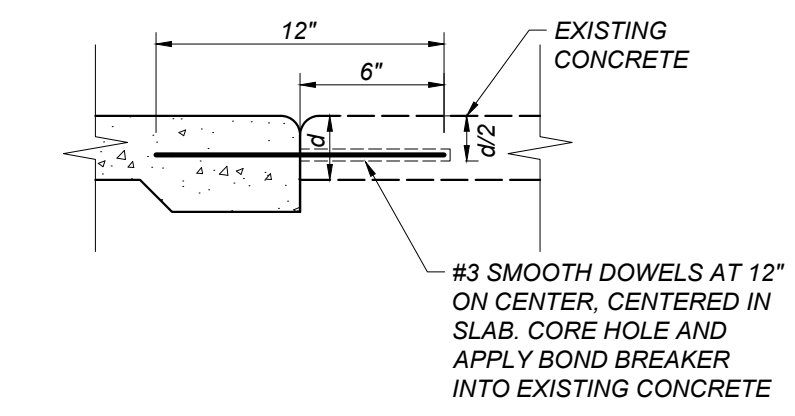
C CRACK PATCHING DETAIL
CN.X10 NOT TO SCALE



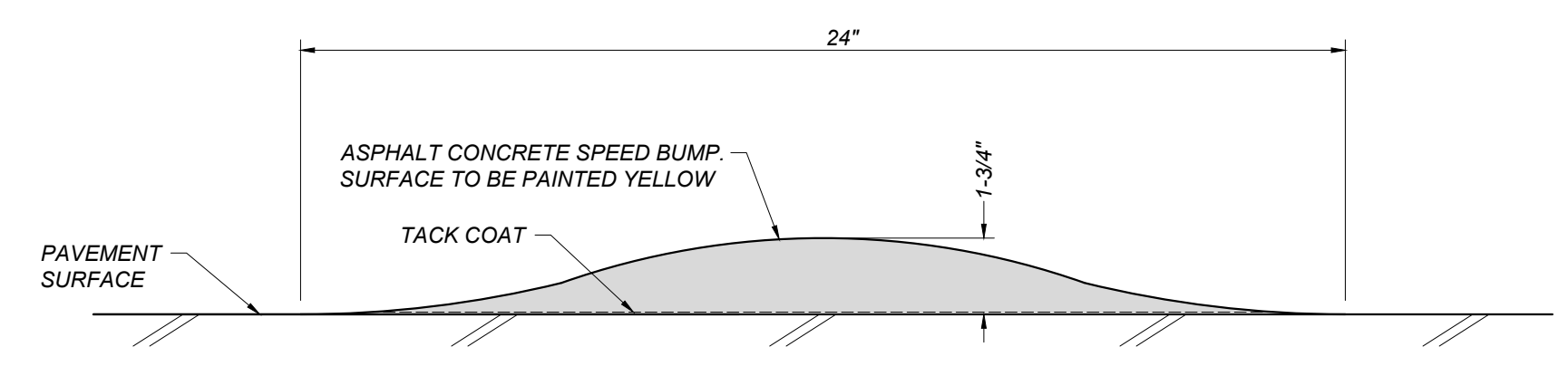
D ASPHALT CONCRETE PLUG
CN.X10 NOT TO SCALE



E ADJUST UTILITY LID
CN.X10 NOT TO SCALE

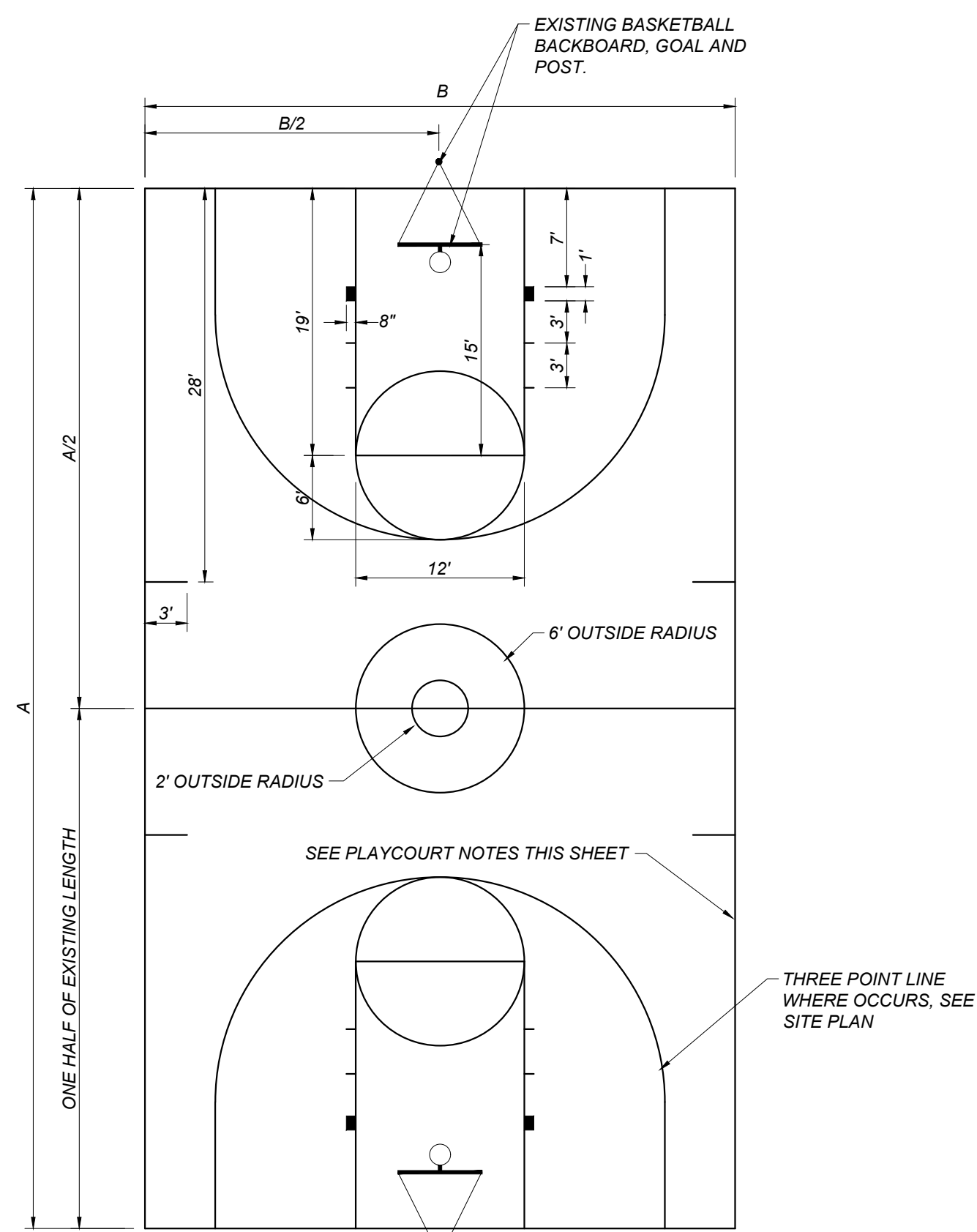


F DOWEL BAR DETAIL
CN.X10 NOT TO SCALE

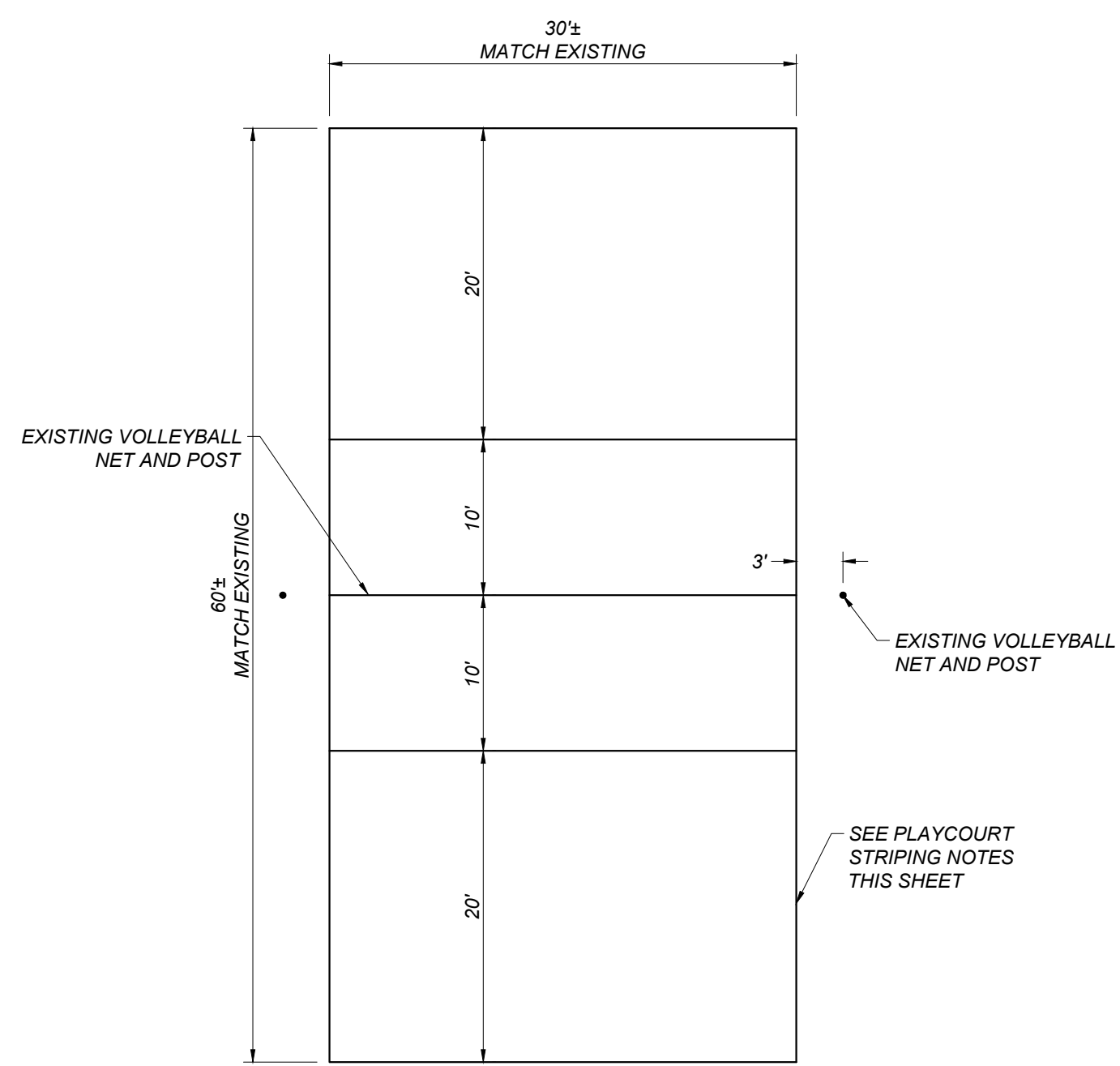


G SPEED BUMP
CN.X10 NOT TO SCALE

<p>Blair, Church & Flynn Consulting Engineers 455 Clovis Avenue, Suite 500 Clovis, California 93612 Tel (559) 326-1400 Fax (559) 326-1500</p>	<p>CONSULTANT</p> <p>REF. & REV.</p>	<p>CLOVIS UNIFIED SCHOOL DISTRICT</p>	
	<p>2023 PAVEMENT REHABILITATION VARIOUS SITES CLOVIS NORTH HIGH SCHOOL DETAILS</p>	<p>CONST. DOCUMENTS</p> <p>DR. BY: AH CH. BY: JF DATE: 01/21/2023 SCALE AS NOTED</p>	<p>CN.X10</p>



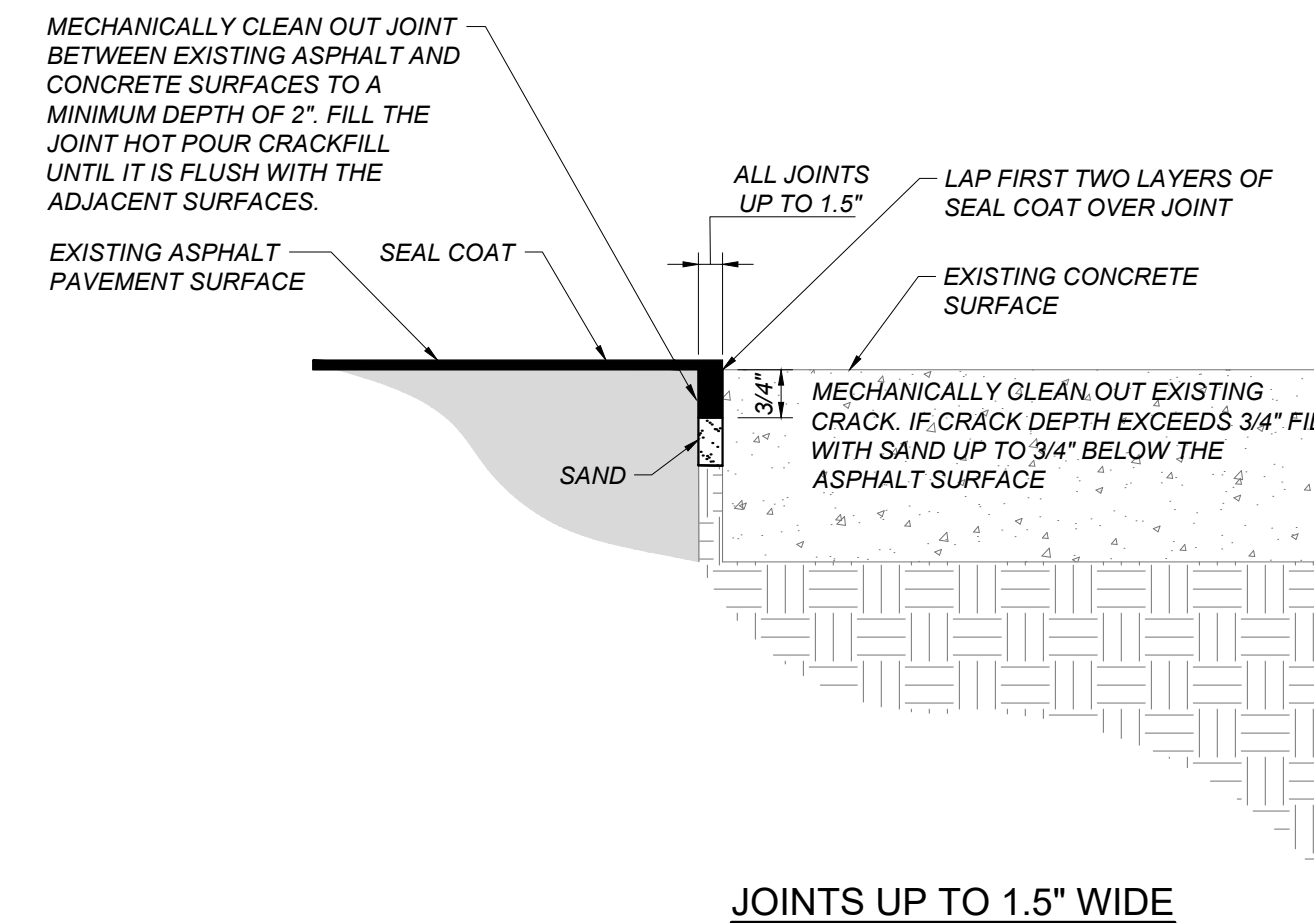
A BASKETBALL COURT
CN.X20 NOT TO SCALE



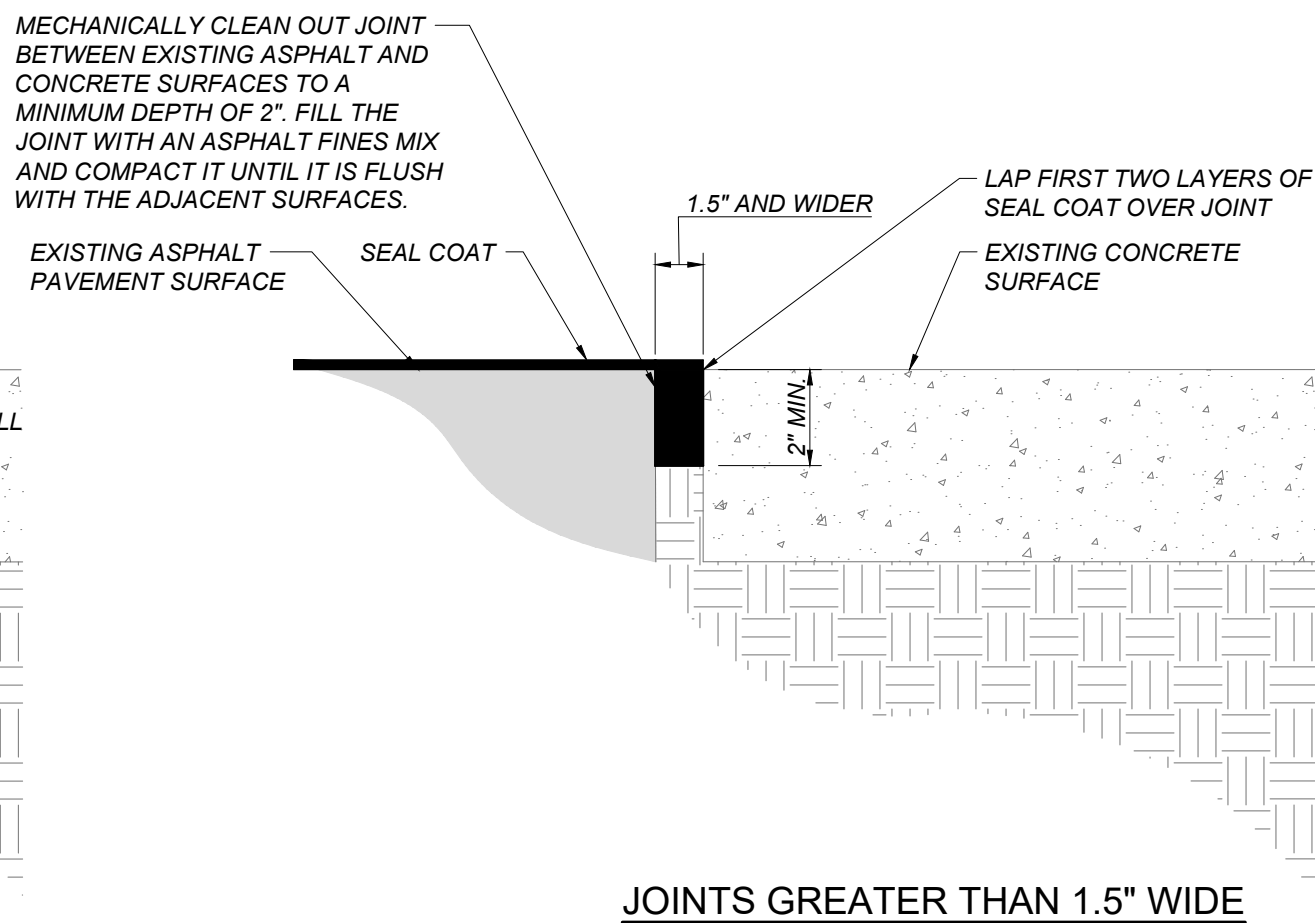
B VOLLEYBALL COURT
CN.X20 NOT TO SCALE

GENERAL NOTES FOR PLAYCOURT STRIPING:

1. ALL COURT LINES ARE TO BE 2" IN WIDTH.
2. BASKETBALL COURTS SHALL BE STRIPED YELLOW, VOLLEYBALL COURTS SHALL BE STRIPED RED, AND ALL OTHER PLAYCOURTS SHALL BE STRIPED WHITE.
3. ALL GAME COURT DIMENSIONS ARE TO THE INSIDE OF COURT LINES, WITH THE EXCEPTION OF THE CENTERLINES.
4. CONTRACTOR IS RESPONSIBLE FOR GAME COURT LAYOUTS.
5. LAYOUT BASKETBALL AND VOLLEYBALL COURTS BASED ON EXISTING GOAL AND NET POSTS. LAYOUT FOURSQUARE AND TETHERBALL GAME COURT STRIPING AS SHOWN ON PLAN.
6. CONTRACTOR TO CONFIRM THE HEIGHT FROM THE TOP OF ALL BASKETBALL RIMS TO THE SURFACE OF THE NEW FINISHED PAVEMENT IS 9 FEET ± 1 INCH. CONTRACTOR TO ADJUST BASKETBALL HOOPS AND BACKBOARDS AS NECESSARY TO ACHIEVE THIS HEIGHT.



C ASPHALT EDGE CONDITION TREATMENT
CN.X20 NOT TO SCALE



CONSULTANT
Blair, Church & Flynn
Consulting Engineers
455 Clovis Avenue,
Suite 500
Clovis, California 93612
Tel (559) 926-1400
Fax (559) 926-1500

REF. & REV.

CLOVIS UNIFIED SCHOOL DISTRICT
2023 PAVEMENT REHABILITATION
VARIOUS SITES
CLOVIS NORTH HIGH SCHOOL
DETAILS

CONST. DOCUMENTS
DR. BY: AH
CH. BY: JF
DATE: 01/21/2023
SCALE AS NOTED
CN.X20