



We **ARE** 
Clovis **UNIFIED!**

Parent Advisory Committee

November 30, 2023

Welcome

1. Call to Order
2. Introductions
3. Approve Agenda
4. Approve Minutes

Public Comments

Program Business

Robyn Snyder

Roles and Responsibilities

- ❖ The Parent Advisory Committee (PAC) will engage in meaningful conversations to support the needs of the district and community.
- ❖ Advise on the district's Consolidated Application for Reporting Systems (CARS)
- ❖ PAC Bylaws

Review of Board Policies

<https://boardpolicies.cusd.com/ClovisUnifiedBoardPolicies.aspx>

1. Local Educational Agency Planning Policy (LEAP)-6171.10
2. Parent Involvement Regarding Categorical Programs-6171 & 6020
3. Uniform Complaint Procedure (UCP)-1312.3 & 1312.4

CUSD Categorical Fund

1. Funding Sources

- Federal Funds (Title I, Title II, Title III, & Title VI and ESSER III)
- Consolidated Application
- LCFF

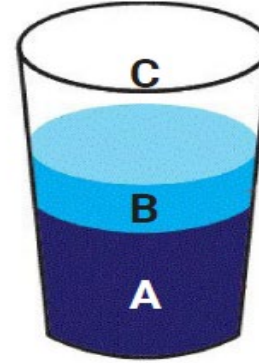
1. Status of LCAP

Status of LCAP

Pa Vue

WHAT IS LCFF

Local Control Funding Formula (LCFF)



Concentration Grant



Additional Funds given to any school district whose percent of qualifying English Learner (EL), Foster Youth (FY), and Low-Income (LI) students exceeds 55%.

\$0

Supplemental Grant



Based on the district's number of unduplicated English Learner (EL), Low-Income (LI), and Foster Youth (FY) students.

\$43,559,002

Uniform Base Amount



Equal amount provided to every district based on the average daily attendance rate and is intended to fund all general operating expenses.

\$454,895,571

WHAT IS LCAP?

- Local Control Accountability Plan
- A three-year plan describing how district funds will be used from California's Local Control Funding Formula (LCFF)
- The LCAP is revised and adopted annually
- The LCAP pairs feedback from educational partners (students, parents, employees, and community members) and proven learning strategies to create an action plan of services
- The LCAP primarily supports Foster Youth, English Learners and Low-Income students

LCAP Goals & Actions

- Goal 1: Maximize Achievement for ALL Students
 - 32 Actions
 - Examples
 - Primary Class Size Reduction
 - Push-in K-6 Teachers
 - Clovis Support and Intervention (CSI)
 - Career Technical Education Courses
- Goal 2: Operate with Increasing Efficiency
 - 14 Actions
 - Student Health Center
 - VAPA Equipment
 - Transitions Teams
- Goal 3: Hire, Develop, Sustain and Value a High-Quality Workforce
 - 2 Actions
 - Professional Development

Feedback Themes

- Social-Emotional Support
- Student Behavioral Needs
- Academic Support
- Student Engagement

New & Revised Actions/Services



NEW ACTION

Goal 1, Action 32: Elementary Social-Emotional Support to assist with social-emotional needs



REVISED ACTION

Goal 2, Action 8: Addition of a Visual and Performing Arts (VAPA) Coordinator, support staff, and a Teacher on Special Assignment to support student engagement



INCREASE IN PROPOSED EXPENDITURES

Goal 1, Action 23: Counselors to reduce caseloads to provide additional academic & social emotional support



INCREASE IN PROPOSED EXPENDITURES

Goal 1, Action 29: Behavior Consultation Team to support student behavioral needs



On the Horizon

- State Dashboard results
- Revisit our actions/services

State Testing Information

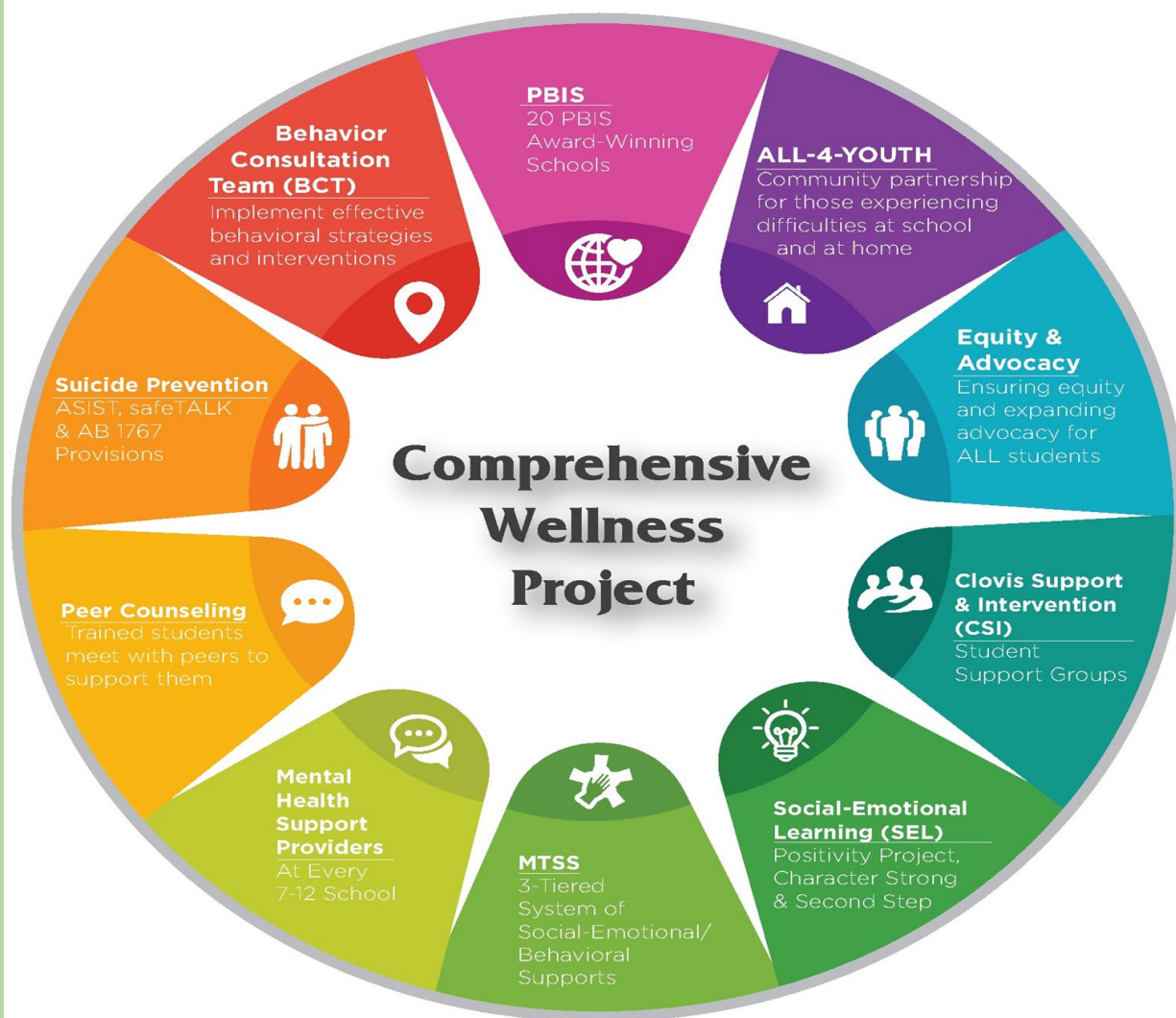
Richard Sarkisian

State Testing Information

- Area Reviews (Principal Grade Level Expectation)
- Data Walk: <https://caaspp-elpac.ets.org/caaspp/>

Social Emotional Support for Students

Dr. David M. Weber



Sharing with our community the great things we are doing for our students....

<https://abc30.com/clovis-unified-mental-health-peer-counseling-student-advice/13959463/>

<https://abc30.com/clovis-unified-mental-health-peer-counseling-student-advice/13959463/>

Upcoming Event

District LCAP Parent Advisory
Committee Meeting

Jan. 29th at 5:00-7:30 at Clovis
Veterans Memorial Building

Thank you!